

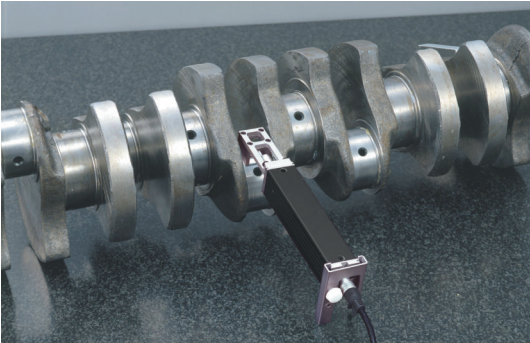
Surftest SJ-210 and SJ-310 - S-Type

Series 178 – Portable Transverse Measurement with S-Type Drive Unit

This is an S-Type drive unit for the Surftest SJ-210 and SJ-310 that provides portable transverse measurement.

It offers you the following benefits:

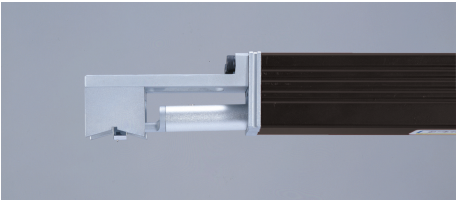
- It is compatible with the conventional drive units of the Surftest SJ-210 and SJ-310.
- You can simply connected it to the display unit.
- A typical application would be to position the S-Type unit on a crankshaft journal bearing, as shown in the photograph below. Once started the S-Type drive will track the stylus across the surface transversely to its own axis and reliably measure surface roughness in the direction of the crankshaft axis. Transverse tracking simplifies the measurement of surface roughness even in very confined situations, which has long been a problem with conventional instruments which allow only longitudinal measurement.



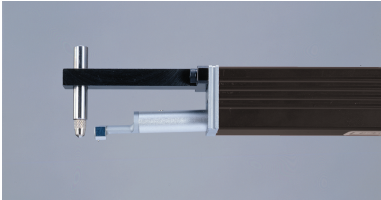
178-234-3 S-Type Drive Unit Set: [incl. 178-233-3 - 12AAE644 - 12AAE643]

S - Type Drive Unit Set: [incl. 178-233-3 - 12AAE644 - 12AAE643]

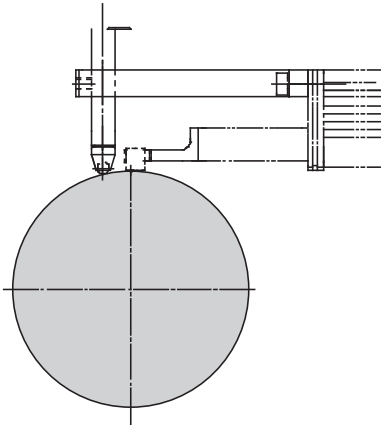
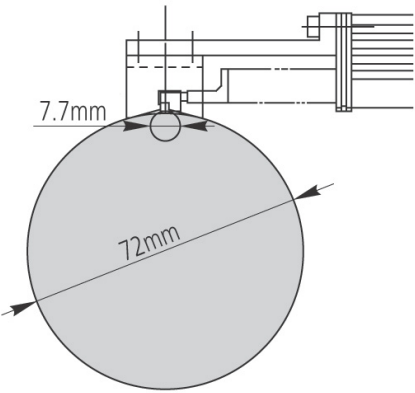
| No. | Traverse | Detector measuring force [mN] | Stylus tip angle | Stylus tip radius [μm] |
|-----------|----------|-------------------------------|------------------|------------------------|
| 178-234-3 | 5,6 mm | 0,75 | 60° | 2 |



12AAE644
V-type adapter

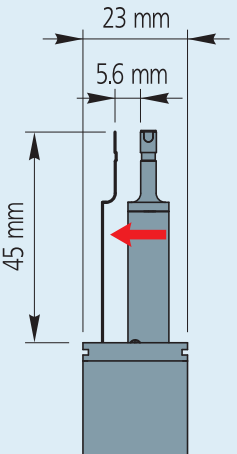


12AAE643
Point - contact adapter



Specifications

| | |
|-----------------|--------------------------------|
| Traverse | 5,6 mm |
| Measuring speed | 0,25 mm/s; 0,5 mm/s; 0,75 mm/s |



Linear movement of S-Type