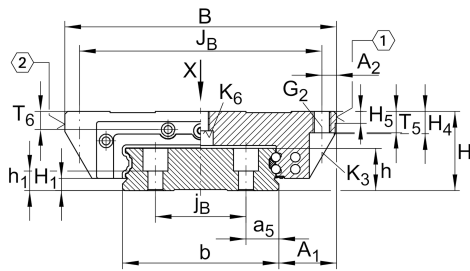


KWVE25-WL

Recirculating ball bearing carriage

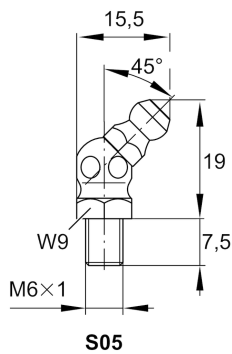
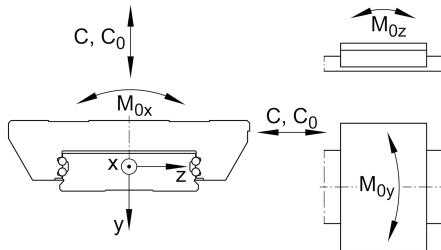
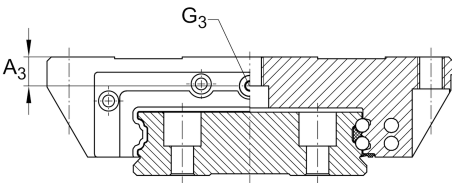
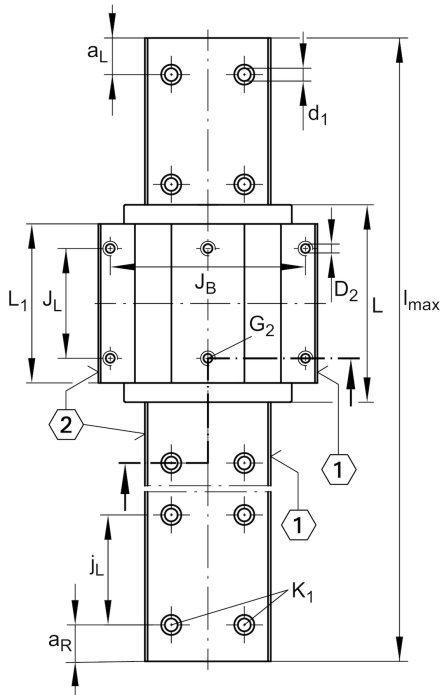
Carriages KWVE..-WL, wide, long carriage for linear recirculating ball bearing and guideway assembly

Technical information



Main Dimensions & Performance Data

H	35 mm	height system
B	120 mm	width carriage
L	107.5 mm	overall length carriage
C	23,400 N	dynamic load rating
C ₀	54,000 N	static load rating
M _{0x}	2,225 Nm	static moment rating about X axis
M _{0y}	825 Nm	static moment rating about Y axis
M _{0z}	825 Nm	static moment rating about Z axis
≈m	1.46 kg	Weight



Mounting dimensions

A_1	25.5 mm	Distance from locating edge on carriage to locating edge on guideway
J_B	107 mm	
b	69 mm	width rail
A_2	6.5 mm	Distance from locating edge to hole
L_1	86.5 mm	
J_L	60 mm	
H_1	5.2 mm	Free space, system dimension
H_4	9.9 mm	
H_5	5 mm	
T_5	10 mm	Thread depth
T_6	10 mm	
G_2	M8	fixing screws above (DIN ISO 4762-12.9)
$G_2 M_A$	41 Nm	maximum tightening torque
K_3	M6	fixing screws below (DIN ISO 4762-12.9)
$K_3 M_A$	17 Nm	maximum tightening torque
K_6	M6	fixing screws below (DIN ISO 4762-12.9)
$K_6 M_A$	17 Nm	maximum tightening torque
D_2	6.7 mm	
A_3	10 mm	position lubrication connector
G_3	M6	lubrication connector
t_{G_3}	6 mm	maximum permissible screw depth for lubrication connectors

Additional information

VMKB_065	KWVE	Material name
----------	------	---------------