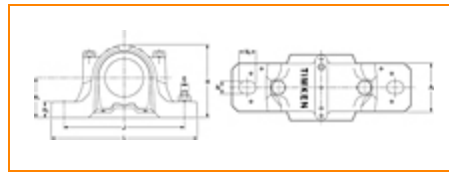




**The Timken Company**  
 4500 Mt Pleasant St. NW  
 N. Canton, OH 44720  
**Phone:** (234) 262-3000

**E-Mail:** [CustomerCAD@timken.com](mailto:CustomerCAD@timken.com) • **Web site:** [www.timken.com](http://www.timken.com)

## Housing – Bearing – Seal SNT 522-619 - 22222 - VR222, SNT Cylindrical Bore Plummer Block Housed Units



[Types of Components](#) | [Housing](#) | [Bearing](#) | [Dimensions](#) | [Specifications](#)

### Types of Components

Housing	SNT 522-619
Bearing	22222
Locating Rings (width x OD)	SR200X13.5
Seal Type	V-ring
Seal	VR222
End Cover <sup>1</sup>	EC522-619

### Housing

Material	Cast Iron
Bolt Qty	2
Housing Mass	22.3 Kg

## Bearing



Cage Type	EJ
C1 Dynamic Load Rating	555
C0 Static Load Rating	653
Max Oil Speed	3500
Max Grease Speed	2900

## Dimensions



Shaft Diameter da	110 mm
Shaft Diameter db	125 mm
A	175.00 mm
A1	120 mm
G	M24
H	242 mm
H1	125.0 mm
H2	45.0 mm
Jmax	356 mm
Jmin	344 mm
J	350.00 mm
L	410.00 mm
N1	32.00 mm
N	26 mm

## Specifications

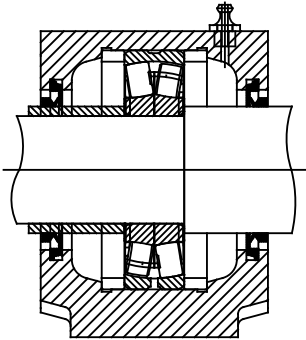
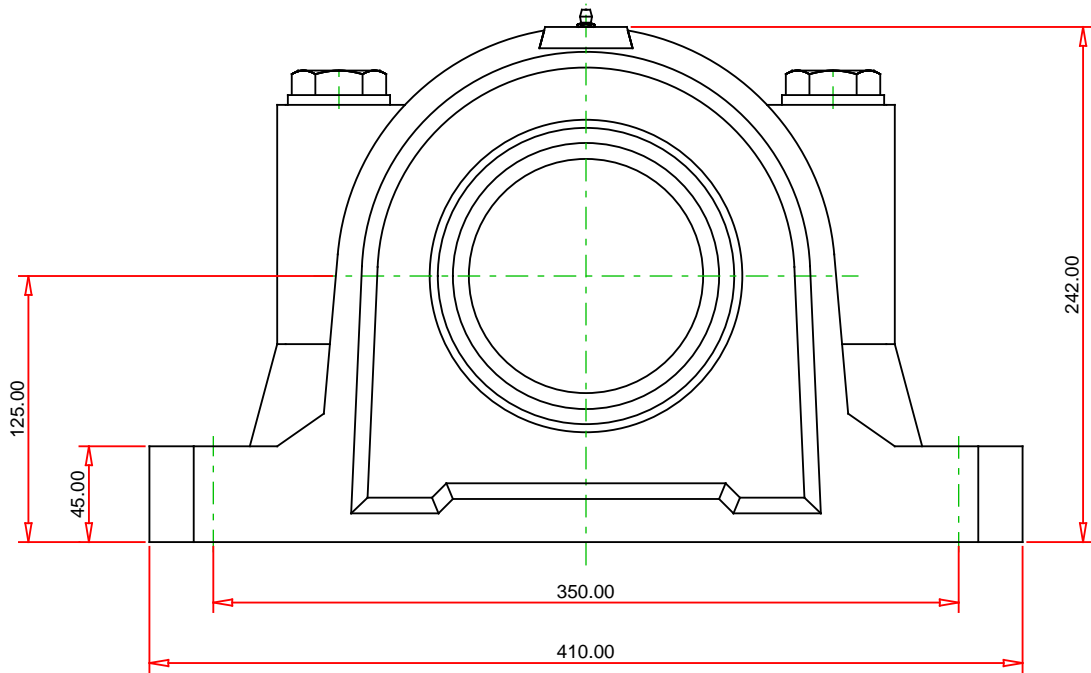
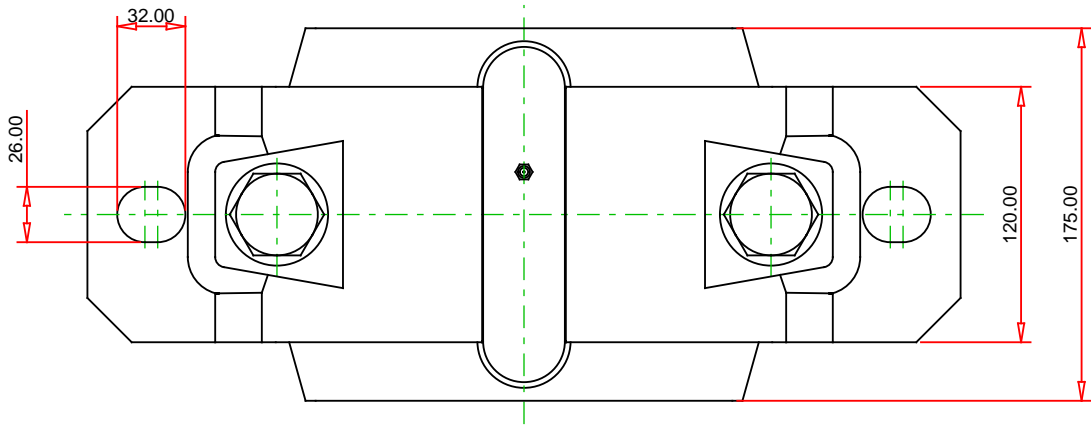
UPC Code

9999999999

Alternate Part Name

SNT522-619 - 22222 - VR222

<sup>1</sup> Two seals are required for a thru shaft application. One end cover can be used if application is not a thru shaft design. In this case, only one seal is required.



Note: Section View not to Scale

METRIC UNITS

<div><div>HousingSNT 522-619</div><div>Bearing22222</div><div>Seal (Quantity 2)VR222</div><div>Seal TypeV-ring</div><div>Locating Ring (Quantity 2)SR200X13.5</div></div>		<div><div>TIMKEN®</div><div>THE TIMKEN COMPANY</div><div>NORTH CANTON, OHIO USA</div></div>		<div><div>SNT 522-619 - 22222 - VR222</div><div>SNT Cylindrical Bore Plummer Block Housed Units</div></div>	
				C1 Dynamic Load Rating (2 rows)	555 kN
				C0 Static Load Rating	653 kN
				Max Oil Speed	3500 RPM
				Max Grease Speed	2900 RPM
				Material	Cast Iron