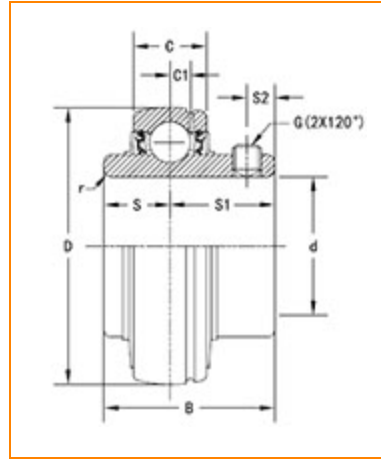




The Timken Company
 4500 Mt Pleasant St. NW
 N. Canton, OH 44720
Phone: (234) 262-3000

E-Mail: CustomerCAD@timken.com • **Web site:** www.timken.com

Part Number UC211-32, UC 200 Wide Inner Ring Ball Bearings - Set Screw Locking



[Specifications](#) | [Dimensions](#) | [Basic Load Ratings](#)

Specifications

Item #	UC211-32
Bore Type	Cylindrical bore
Bearing Type	Ball Bearing
Shaft Size d	2 in
Weight	2.8 lb 1.30 Kg
Locking Style	Set Screw Locking

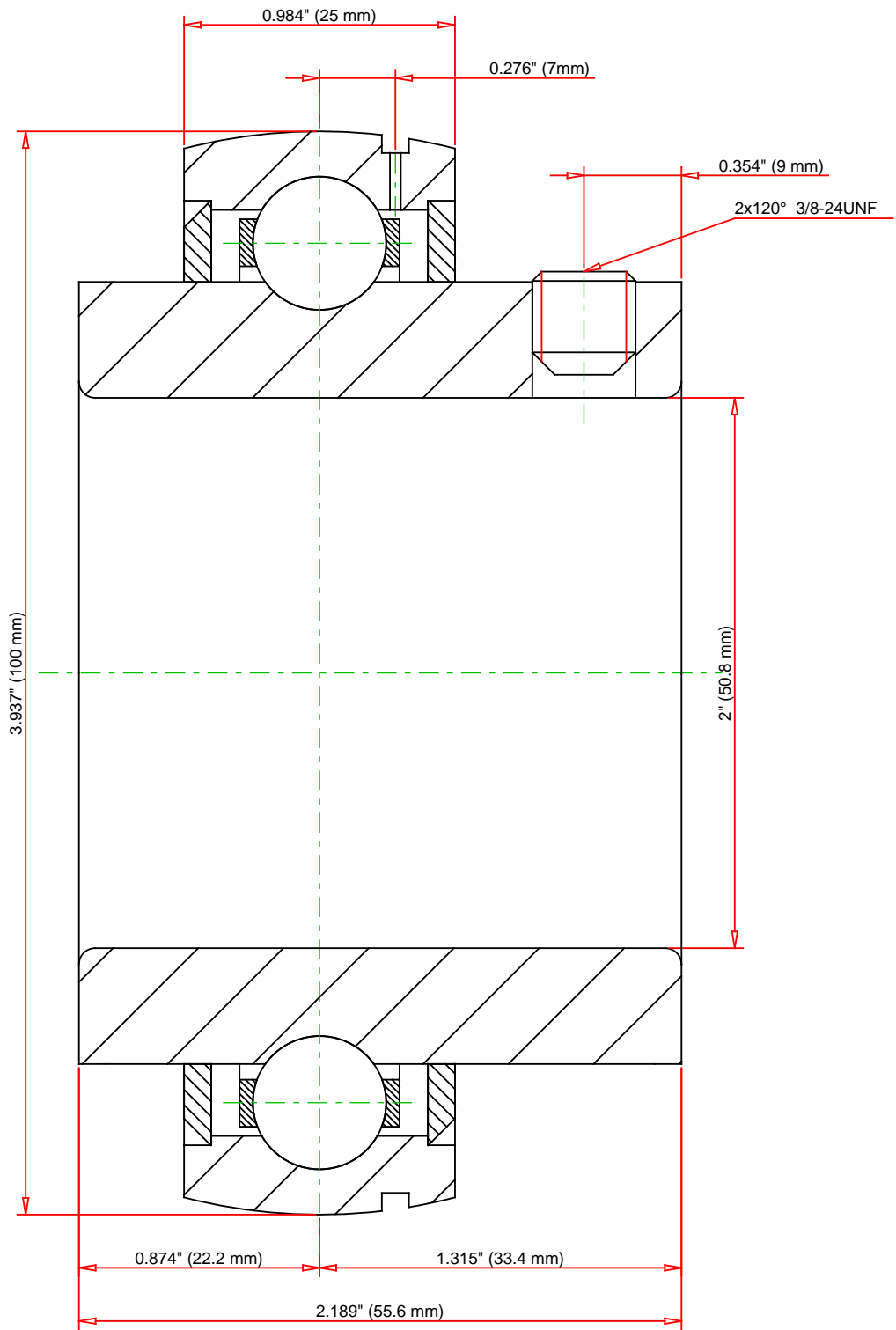
Dimensions

Outside Diameter D	100.000 mm 3.937 in
Outside Ring Width C	25.000 mm 0.984 in

	0.784 in
Radius r	1.5 mm 0.059 in
Groove Position C1	7.00 mm 0.276 in
Center of Bearing from End S	22.2 mm 0.874 in
Dimension S1	33.40 mm 1.315 in
Set Screw Distance S2	9.00 mm 0.354 in
Set Screw Size	3/8-24UNF
Number of Set Screws	2
Angle between Set Screws	120 °

Basic Load Ratings

Static Load Rating	6609 lbf 29400 N
Dynamic Load Rating	9757 lbf 43400 N



Weight		2.8 lb	1.3 kg	<div>TIMKEN®</div> <div>THE TIMKEN COMPANY</div> <div>NORTH CANTON, OHIO USA</div>	<div>UC211-32</div> <div>UC 200 Wide Inner Ring Ball Bearings - Set Screw Locking</div>			
					Basic Load Ratings - C _r		9757 lbf	43400 N
					Load Ratings - C _{0r}		6609 lbf	29400 N
Every reasonable effort has been made to ensure the accuracy of the information contained in this writing, but no liability is accepted for errors, omissions or for any other reason.					FOR DISCUSSION ONLY			