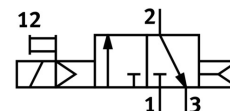
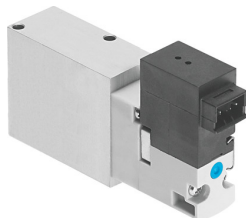


Solenoid valve VOVG-B12-M32C-AH-F-1H2

Part number: 560709

FESTO



[PDF](#) General operating condition

Data sheet

Feature	Value
Valve function	3/2-way, closed, monostable
Type of actuation	Electric
Construction width	12 mm
Standard nominal flow rate	180 l/min
pneumatic working port	Sub-base
Operating voltage	24V DC
Operating pressure	0.2 MPa ... 0.8 MPa
Operating pressure	2 bar ... 8 bar
Operating pressure	29 psi ... 116 psi
Design	Piston gate valve
Type of reset	Pneumatic spring
Degree of protection	IP40
Nominal size	2.1 mm
Exhaust-air function	With flow control option
Sealing principle	Soft
Mounting position	optional
Manual override	Non-detenting
Type of piloting	Pilot actuated
Flow direction	Non-reversible
Symbol	00991183
lap	Overlap
Switching time off	10 ms
Switching time on	12 ms
Characteristic coil data	24 V DC: 1.0 W
Operating medium	Compressed air to ISO 8573-1:2010 [7:4:4]
Note on operating and pilot medium	Lubricated operation possible (in which case lubricated operation will always be required)
Corrosion resistance class CRC	0 - No corrosion stress
LABS (PWIS) conformity	VDMA24364-B2-L
Media temperature	-5 °C ... 50 °C
Pilot medium	Compressed air to ISO 8573-1:2010 [7:4:4]
Ambient temperature	-5 °C ... 50 °C
Electrical connection	2-pin Plugs
Pneumatic connection, port 1	Sub-base
Pneumatic connection, port 2	Sub-base

Feature	Value
Pneumatic connection, port 3	Sub-base
Note on materials	RoHS-compliant
Material seals	FPM HNBR NBR
Material housing	Wrought aluminium alloy