

How to Order

VEX 1 3 0 1 - 03 [] [] D [] - B

Regulator valve

Operation type

| | |
|---|-------------------------|
| 0 | Air operated |
| 1 | External pilot solenoid |

Thread type

| | |
|-----|------|
| Nil | Rc |
| F | G |
| N | NPT |
| T | NPTF |

Rated voltage (Only with solenoid)

| | |
|----|--------------------|
| 1 | 100 VAC (50/60 Hz) |
| 2 | 200 VAC (50/60 Hz) |
| 3* | 110 VAC (50/60 Hz) |
| 4* | 220 VAC (50/60 Hz) |
| 5 | 24 VAC |
| 6* | 12 VAC |
| 7* | 240 VAC (50/60 Hz) |
| 9* | Other |

* Option

Option

| | |
|-----|---------------------|
| Nil | None |
| B | Bracket |
| F | Foot (VEX110□ only) |
| G | Gauge |

• When specifying more than one option, combine symbols alphabetically.

Light/Surge voltage suppressor (Only with solenoid)

| | |
|-----|--|
| Nil | None |
| S | With surge voltage suppressor (For grommet only) |
| Z | With light/surge voltage suppressor (Except grommet) |

Sub-plate and gasket part no.

Sub-plate: VEX1 - 9 - 1 [] [] P

Port size: Symbol A 1/8, B 1/4

Thread type: Symbol Nil Rc, F G, N NPT, T NPTF

Base gasket: VEX1 - 11 - 2

Body size

Port size

Electrical entry (Only with solenoid)

| Body size | Port | Port size | | Electrical entry |
|--------------|------|-------------------|---|---|
| | | 1(P), 2(A) | 3(R) | |
| Body ported | 1 | 01 | 1/8 | G — Grommet (Lead wire length 300 mm) H — Grommet (Lead wire length 600 mm) D — DIN terminal DO — DIN terminal (Without connector) |
| | | 02 | 1/4 | |
| | | 03 | 3/8 | |
| | | 04 | 1/2 | |
| | 3 | 05 | 1/2 | G — Grommet (Lead wire length 300 mm) H — Grommet (Lead wire length 600 mm) E — Grommet terminal T — Conduit terminal D — DIN terminal |
| | | 06 | 3/4 | |
| | | 10 | 1 | |
| | | 12 | 1 1/4 | |
| | 7 | 13 | 1 1/2 | G — Grommet (Lead wire length 300 mm) H — Grommet (Lead wire length 600 mm) D — DIN terminal (Without connector) |
| | | 14 | 2 | |
| | | 15 | 2 1/2 | |
| | | 16 | 3 | |
| 9 | 17 | 3 1/2 | G — Grommet (Lead wire length 300 mm) H — Grommet (Lead wire length 600 mm) D — DIN terminal (Without connector) | |
| | 18 | 4 | | |
| | 19 | 4 1/2 | | |
| | 20 | 5 | | |
| Base mounted | Nil | Without sub-plate | G — Grommet (Lead wire length 300 mm) H — Grommet (Lead wire length 600 mm) D — DIN terminal DO — DIN terminal (Without connector) | |
| | 01 | 1/8 | | |
| | 02 | 1/4 | | |
| | 03 | 1/2 | | |

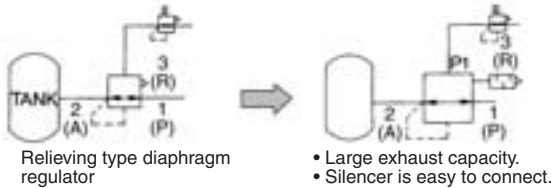
⚠ Caution

Refer to front matters 58 and 59 for Safety Instructions and pages 3 to 7 for 3/4/5 Port Solenoid Valve Precautions.

Application Example

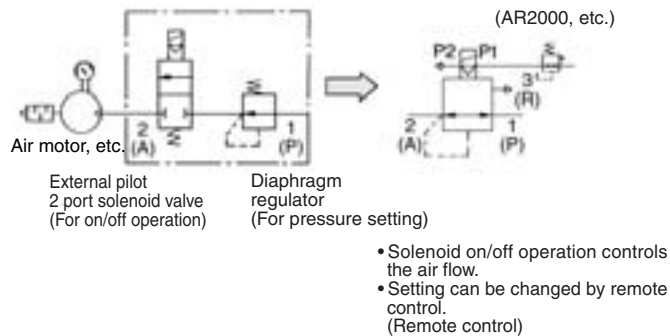
1. Relief regulator (Rapid tank internal pressure setting)

(Relieving type regulator e.g. AR2000)



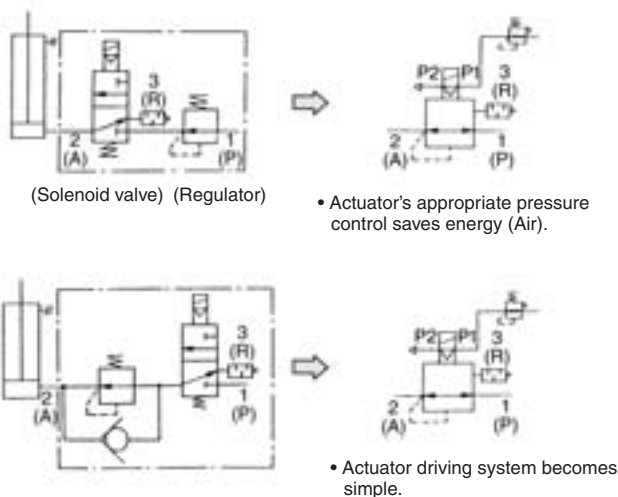
2. Air blow (As 2 port directional control regulator valve)

(AR2000, etc.)

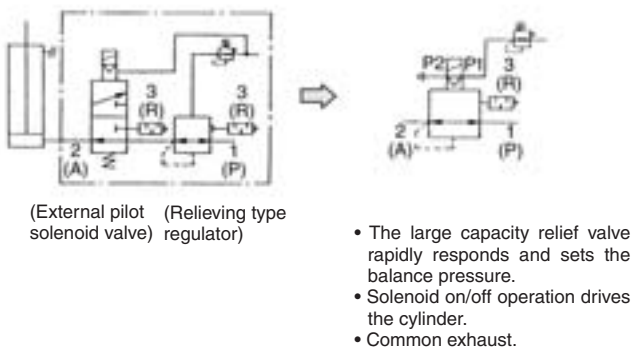


3. Constant pressure supply and driving (As 3 port directional control regulator valve)

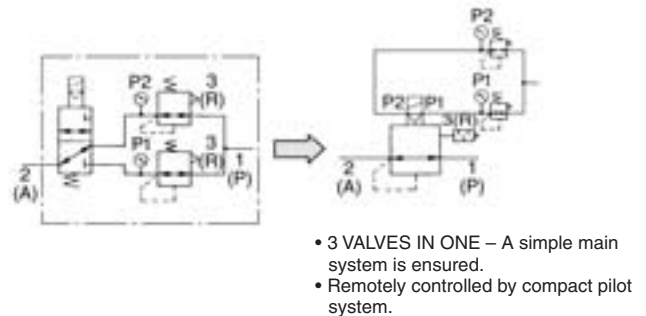
Note) The pressure is about 0.01 MPa when OFF because of leakage.



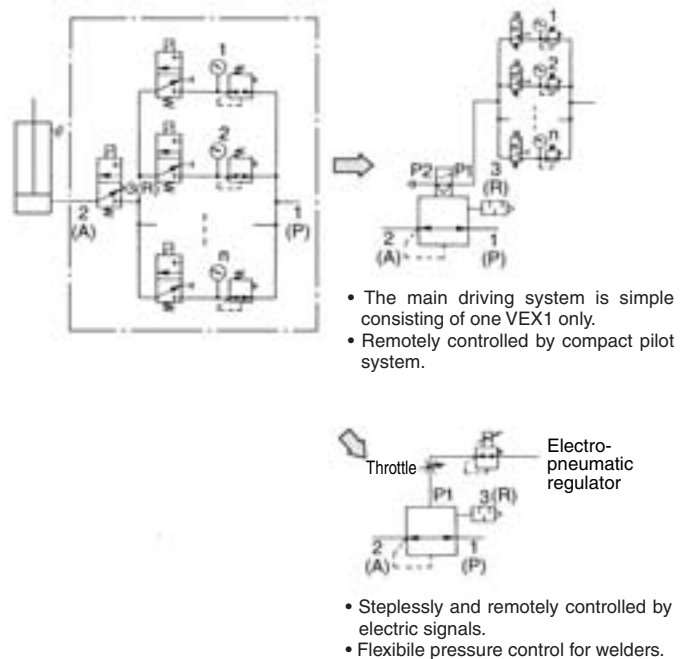
4. Balance and driving



5. 2 steps directional control setting



6. Multiple steps pressure control (Toward stepless control)



⚠ Caution

- When the VEX outlet side capacity is small, install a speed controller AS2000, in the pilot pipe to lower the pilot pressure for vibration prevention. (Meter-in)

⚠ Caution ((5) 2 steps directional control setting, (6) multiple steps pressure control setting)

- Relieving type regulator such as AR2000, etc. should be used as pilot regulator in the application. (When the non-relieving type is used, pressure cannot be changed from high to low.)
- A sensitive regulator such as the ARP3000, etc. should be used as a pilot regulator on the low pressure side, particularly with 5. 2 steps directional control setting and 6. multiple steps pressure control. (Using a non-sensitive regulator may cause unstable pressure.)