

Pressure Gauge for General Purpose/ With Limit Indicator

Series G46/GA46



G46-10-02M-C

- Be sure to read the precautions on page 663 for selection and mounting.

Standard Specifications

Model		G46	GA46
Type		Back side thread	Vertical side thread
Port size ⁽¹⁾		R 1/8, R 1/4 (Option M: with M5 female thread)	
Fluid ⁽²⁾		Air	
Indication precision		±3% F.S. (Full span)	
Material	Case (Surface treatment)	Aluminum die-casted (Black disulfide molybdenum coated)	Rolled steel (Black melamine painted)
	Clear cover	Polycarbonate (Part no.: G46-00-00-3)	
	Stud (Surface treatment)	Aluminum die-casted (Black disulfide molybdenum coated)	Brass
	Bourdon tube	Brass	
Mass (kg)		0.05	0.075
Attachment: With cover ring assembly		C	Part no.: 1305104-1A
		C1	Part no.: 1305104-3A

Note 1) When mounting a pressure gauge, use caution not to tighten excessively. Excessive tightening will cause product to be damaged. Use a pipe tape for sealing. Recommended tightening torque: R 1/8: Set between 7 and 9 N·m, R 1/4: 12 and 14 N·m respectively.

Note 2) Not applicable to water as fluid because its stud is made from aluminum die-casting. Water may cause corrosion and block the air passage. Use G46-□-X3 pressure gauge with wetted parts stainless steel (wetted parts of G46-□-01M are made of brass and this become lightly corroded. Take precautions when using.) Design system to not be affected by water hammer when using water as fluid. Similarly, when using other fluids, please consult SMC for fluid compatibility information concerning corrosive potential.

Model (Standard)

Model	Pressure range ⁽¹⁾	Indication unit	Connection thread	Note
	MPa			
G46-2-01/02	0 to 0.2	MPa	R 1/8, 1/4	—
G46-4-01/02	0 to 0.4			
G46-7-01/02	0 to 0.7			
G46-10-01/02	0 to 1.0		R 1/8, 1/4 M5 (Female thread)	
G46-2-01 to 02M	0 to 0.2			
G46-4-01 to 02M	0 to 0.4			
G46-7-01 to 02M	0 to 0.7			
G46-10-01 to 02M	0 to 1.0			
GA46-10-01 to 02	0 to 1.0		R 1/8, 1/4	

Note 1) Do not apply pressure more than the maximum display pressure. This will cause a malfunction.

Model (Made to Order)

Other versions of this unit can be made on a made-to-order basis. Please consult with SMC for details, as delivery times may be extended.

Model	Pressure range ⁽¹⁾		Indication unit	Connection thread	Note
	MPa	psi			
G46-2-01 to 02-C/C1	0 to 0.2	—	MPa	R 1 ¹ / ₈ , 1 ¹ / ₄	With cover ring assembly
G46-4-01 to 02-C/C1	0 to 0.4	—			
G46-7-01 to 02-C/C1	0 to 0.7	—			
G46-10-01 to 02-C/C1	0 to 1.0	—			
G46-2-01 to 02M-C/C1	0 to 0.2	—		R 1 ¹ / ₈ , 1 ¹ / ₄ M5 (Female thread)	
G46-4-01 to 02M-C/C1	0 to 0.4	—			
G46-7-01 to 02M-C/C1	0 to 0.7	—			
G46-10-01 to 02M-C/C1	0 to 1.0	—			
G46-P2-01 to 02-X30	0 to 0.2	0 to 30	MPa, psi	R 1 ¹ / ₈ , 1 ¹ / ₄	—
G46-P10-01 to 02-X30	0 to 1.0	0 to 150			
G46-2-02M-X4	0 to 0.2	—	MPa	R 1 ¹ / ₄ M5 (Female thread)	Oil-free
G46-4-02M-X4	0 to 0.4	—			
G46-7-02M-X4	0 to 0.7	—			
G46-10-02M-X4	0 to 1.0	—			
G46-2-02M-C/C1-X4	0 to 0.2	—			Oil-free, With cover ring assembly
G46-4-02M-C/C1-X4	0 to 0.4	—			
G46-7-02M-C/C1-X4	0 to 0.7	—			
G46-10-02M-C/C1-X4	0 to 1.0	—			
G46-P2-01 to 02-C-X30	0 to 0.2	0 to 30	MPa, psi	R 1 ¹ / ₈ , 1 ¹ / ₄	With cover ring assembly
G46-P10-01 to 02-C-X30	0 to 1.0	0 to 150			
G46-10-02-X2	0 to 1.0	—	MPa	R 1 ¹ / ₄	Plated stem (Ni) —
G46-15-01 to 02	0 to 1.5	—			

Note 1) Do not apply pressure more than the maximum display pressure. This will cause a malfunction.

Pressure Gauge for General Purpose/With Limit Indicator *Series G46/GA46*

How to Order

G **46** - **10** - **01** - **Option** - **Attachment** - **Option**

• **Pressure gauge**

Symbol	Type
Nil	Back side thread
A	Vertical side thread

• **Type**

• **Connection thread**

Symbol	Size
01	R 1/8
02	R 1/4

• **Option**

Symbol	Specifications
Nil	—
M	With M5 (Female thread)

Note) Use M5 female thread when piping onto a panel.

• **Max. display pressure**

Symbol	Unit
2	0.2 MPa
4	0.4 MPa
7	0.7 MPa
10	1.0 MPa
15	1.5 MPa
P2 (Note)	0.2 MPa, 30 psi
P10 (Note)	1.0 MPa, 150 psi

Note) This symbol must be used with Option "X30."

• **Attachment**

Symbol	Specifications
Nil	Without cover ring assembly
C (Note)	Clear cover has no protrusion. (Clear cover is irremovable.)
C1 (Note)	Clear cover has protrusion. (Clear cover is removable.)

Note) Compatible with G46 type only

• **Option**

Symbol	Specifications
Nil	—
X2	Stud parts Nickel plated
X3 (1) (2)	Wetted parts stainless steel (1)
X4	Oil-free (Wetted parts degrease washing)
X30	Both MPa and psi

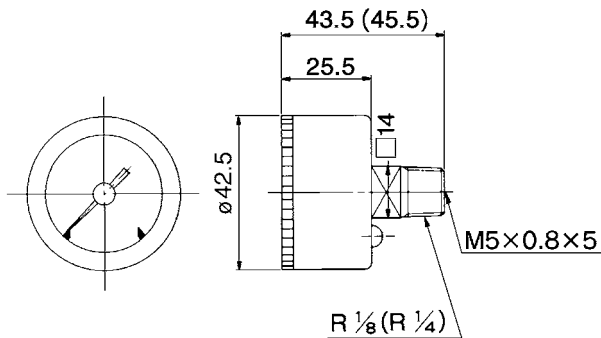
Note 1) Movable parts (gear, etc) inside pressure gauge are made of brass.
Note 2) Compatible with G46 type only

• **Size**

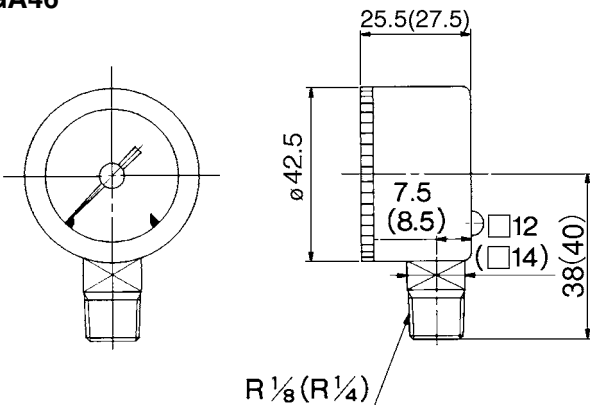
Symbol	Outside diameter
46	ø42.5

Dimensions The dimensions in (): Connecting thread R 1/4

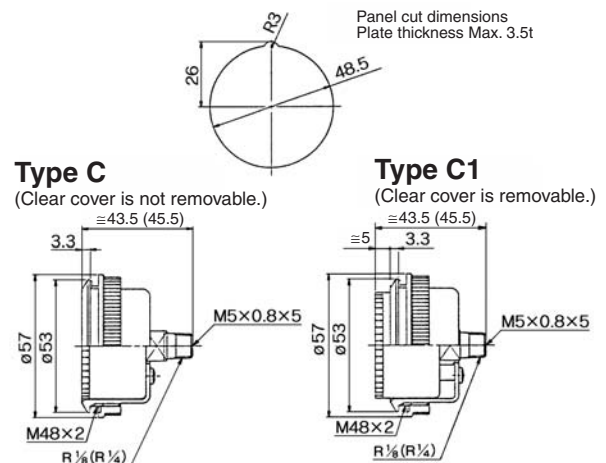
G46



GA46



G46: With cover ring assembly (For panel mount)



For setting method, refer to page 662.