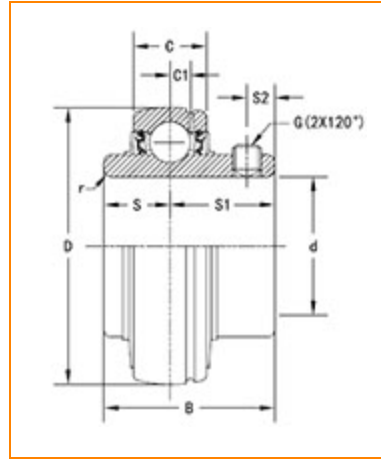




The Timken Company
 4500 Mt Pleasant St. NW
 N. Canton, OH 44720
Phone: (234) 262-3000

E-Mail: CustomerCAD@timken.com • **Web site:** www.timken.com

Part Number UC209, UC 200 Wide Inner Ring Ball Bearings - Set Screw Locking



[Specifications](#) | [Dimensions](#) | [Basic Load Ratings](#)

Specifications

Item #	UC209
Bore Type	Cylindrical bore
Bearing Type	Ball Bearing
Shaft Size d	45 mm
Weight	1.80 lb 0.8 Kg
Locking Style	Set Screw Locking

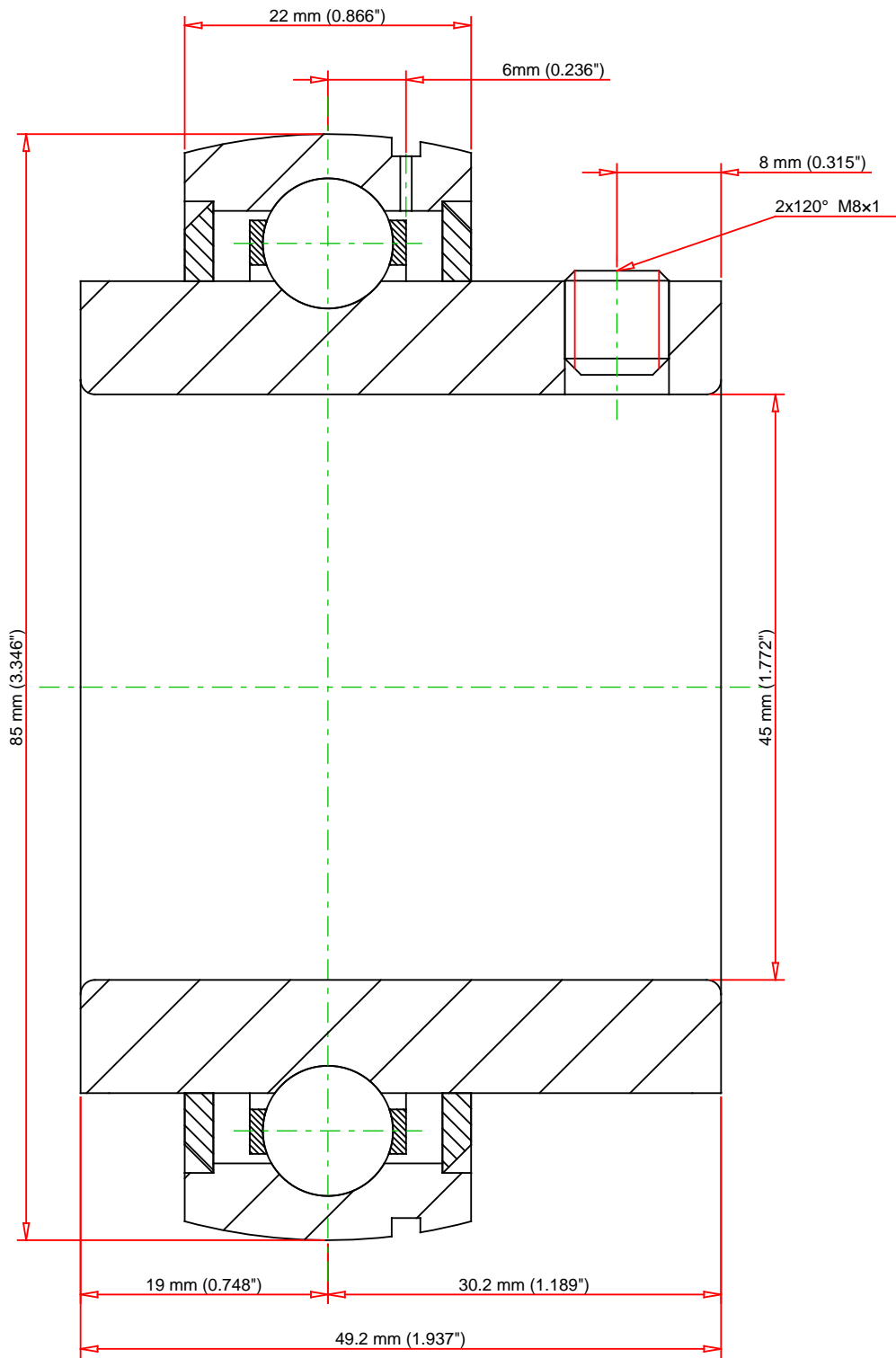
Dimensions


Outside Diameter D	85.000 mm 3.346 in
Outside Ring Width C	22.000 mm 0.866 in

	0.888 in
Radius r	1.1 mm 0.043 in
Groove Position C1	6.00 mm 0.236 in
Center of Bearing from End S	19 mm 0.748 in
Dimension S1	30.20 mm 1.189 in
Set Screw Distance S2	8.00 mm 0.315 in
Set Screw Size	M8×1
Number of Set Screws	2
Angle between Set Screws	120 °

Basic Load Ratings

Static Load Rating	4788 lbf 21300 N
Dynamic Load Rating	7666 lbf 34100 N



Weight	1.8 lb	0.8 kg		UC209 UC 200 Wide Inner Ring Ball Bearings - Set Screw Locking	
					THE TIMKEN COMPANY NORTH CANTON, OHIO USA
			Basic Load Ratings - C _r	7666 lbf	
			Load Ratings - C _{0r}	4788 lbf	21300 N
Every reasonable effort has been made to ensure the accuracy of the information contained in this writing, but no liability is accepted for errors, omissions or for any other reason.				FOR DISCUSSION ONLY	