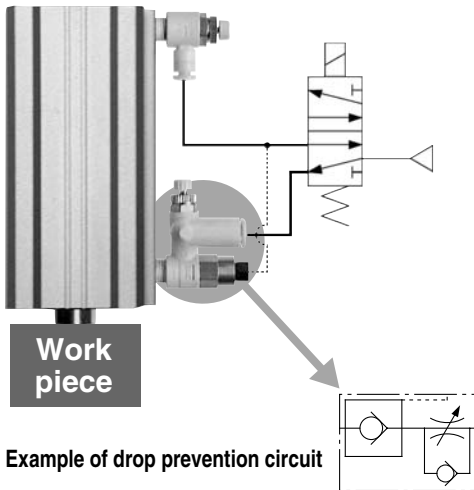


Speed Controller with Pilot Check Valve with One-touch Fitting *Series ASP*

Pilot check valve and speed controller are combined.

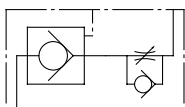
Realizes momentary intermediate stoppage of a cylinder and able to adjust speed control of it.



Tubing mount direction is 360° free.
Electroless nickel plated is provided as standard.



JIS Symbol



Made to Order



Lubricant: Vaseline

X12

Model

Model	Port size	Pilot port	Applicable tubing O.D.							
			Metric size				Inch size			
			ø6	ø8	ø10	ø12	ø1/4"	ø5/16"	ø3/8"	ø1/2"
ASP330F-01	R 1/8	M5 x 0.8	●	●						
ASP430F-02	R 1/4	Rc 1/8	●	●						
ASP530F-03	R 3/8	Rc 1/8		●	●					
ASP630F-04	R 1/2	Rc 1/4			●	●				
ASP430F-F02	R 1/4	G 1/8	●	●						
ASP530F-F03	R 3/8	G 1/8		●	●					
ASP630F-F04	R 1/2	G 1/4			●	●				
ASP330F-N01	NPT 1/8	10-32 UNF					●	●		
ASP430F-N02	NPT 1/4	NPT 1/8					●	●		
ASP530F-N03	NPT 3/8	NPT 1/8						●	●	
ASP630F-N04	NPT 1/2	NPT 1/4							●	●

Note) Brass parts are all electroless nickel plated.

Specifications

Fluid	Air
Proof pressure	1.5 MPa
Max. operating pressure	1 MPa
Min. operating pressure	0.1 MPa
Pilot check valve operating pressure	More than 50% the operating pressure (Over 0.1 MPa)
Ambient and fluid temperature	-5 to 60°C (No freezing)
Number of needle rotations	10 turns
Applicable tubing material	Nylon, Soft nylon, Polyurethane

Note) Use caution regarding the max. operating pressure when soft nylon or polyurethane tubing is used.
(Refer to pages 371 and 372 for details.)

Flow Rate and Effective Area

Model		ASP330F	ASP430F		ASP530F		ASP630F	
Tubing O.D.	Metric size	ø6, ø8	ø6	ø8	ø8	ø10	ø10	ø12
	Inch size	ø1/4" ø5/16"	—	ø1/4" ø5/16"	ø5/16"	ø3/8"	—	ø3/8" ø1/2"
Controlled flow (Free flow)	Flow rate (ℓ/min(ANR))	180	330	350	600	750	1100	1190
	Effective area (mm ²)	2.9	5.2	5.4	9.3	11.6	17	18.4

Note) Flow rate values are measured at 0.5 MPa and 20°C.

AS

ASP

ASN

AQ

ASV

AK

VCHC

ASS

ASR
ASQ

KE

TMH

How to Order

AS P 3 3 0 F — U 01 — 07 — X352

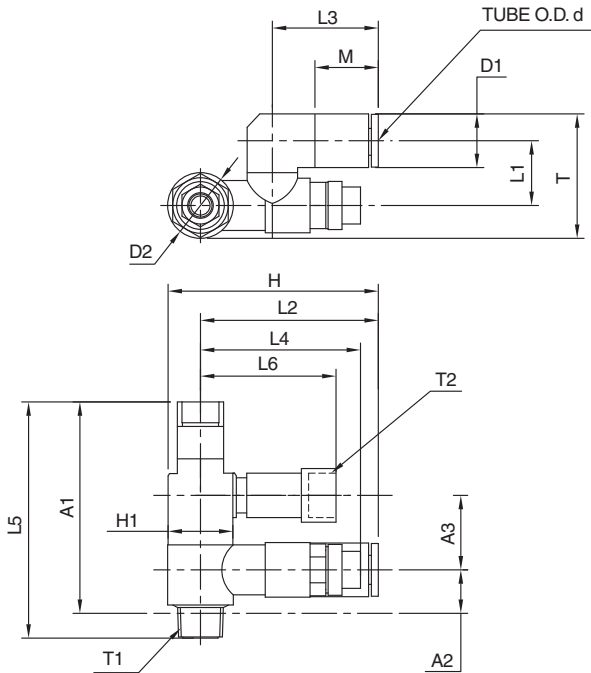
- Flow control**
- With pilot check valve**
- Body size**

3	1/8
4	1/4
5	3/8
6	1/2
- Universal type**
- With One-touch fitting**
- Uni-fit thread form**
- With residual pressure relief valve (manual), G thread pilot port**
- Applicable tubing O.D.**

Metric size		Inch size	
06	ø6mm	07	ø1/4"
08	ø8mm	09	ø5/16"
10	ø10mm	11	ø3/8"
12	ø12mm	13	ø1/2"
- Thread size**

01	1/8
02	1/4
03	3/8
04	1/2

Dimensions



Models

Model number	Piping thread	Pilot port	Applicable tubing O.D.						
			Metric size				Inch size		
			ø6	ø8 (5/16")	ø10	ø12	ø1/4"	ø3/8"	ø1/2"
ASP330F-U01-□-X352	1/8" Uni-fit	G 1/8"	●				●		
ASP430F-U02-□-X352	1/4" Uni-fit	G 1/4"		●			●		
ASP530F-U03-□-X352	3/8" Uni-fit	G 3/8"			●			●	
ASP630F-U04-□-X352	1/2" Uni-fit	G 1/2"				●			●

Note) Additional models are possible (i.e. thread form/tubing size combinations), please contact your SMC representative for availability.



Model number	Applicable tubing diameter ød	A1	A2	A3	D1	D2	H	H1	L1	L2	L3	L4	L5	L6	M	T	T1	T2
ASP330F-U01-06-X352	6mm	45.7	9.4	16.1	ø11.6	ø14.2	45.5	14	14	38.4	22.9	34.6 to 39.6	51.1	29.3	13.7	26.9	1/8" Uni	G 1/8"
ASP330F-U01-07-X352	1/4"																	
ASP430F-U02-07-X352	1/4"	63.6	10.4	23	ø15.2	ø18.5	58	21	17.9	46.4	28.2	36.7 to 41.7	70.4	41.7	18.7	34.7	1/4" Uni	G 1/4"
ASP430F-U02-08-X352	8mm (5/16")																	
ASP530F-U03-10-X352	10mm	70.5	13.2	25	ø18.5	ø23	66.1	24	23.1	54.1	32.6	41.9 to 46.9	77.9	44	20.8	43.9	3/8" Uni	G 3/8"
ASP530F-U03-11-X352	3/8"																	
ASP630F-U04-12-X352	12mm	79.4	18.7	29.8	ø20.9	ø28.6	80.3	24	25.9	66	34.3	57.3 to 64.8	87.5	52.2	21.8	50.7	1/2" Uni	G 1/2"
ASP630F-U04-13-X352	1/2"																	



SMC Corporation of America
 10100 SMC Boulevard, Noblesville, Indiana
 46060, U.S.A.
 Phone: 317-762-7621 Fax: 317-899-3102
www.smcusa.com

SMC Pneumatics (Canada) Ltd.
 2715 Bristol Circle, Oakville, Ontario
 L6H 6X5 Canada
 Phone: 800-762-7621 Fax: 905-812-8686
www.smcpcanada.com