

Pressure Gauge for General Purpose/ With Limit Indicator

Series *G36/GA36*



G36-10-01

- Be sure to read the precautions on page 663 for selection and mounting.

Standard Specifications

Model		G36	GA36
Type		Back side thread	Vertical side thread
Port size ⁽¹⁾		R 1/8 (Option M: With M5 female thread)	
Fluid ⁽²⁾		Air	
Indication precision		±3% F.S. (Full span)	
Material	Case (Surface treatment)	Aluminum die-casted (Black disulfide molybdenum coat treated)	Rolled steel (Black melamine painted)
	Clear cover	Polycarbonate (Part no.: G36-00-00-3)	
	Stud (Surface treatment)	Aluminum die-casted (Black disulfide molybdenum coat treated)	Brass
	Bourdon tube	Brass	
Mass (kg)		0.04	0.05

Note 1) When installing a pressure gauge, be careful not to fasten too tight. Excessive tightening will result in damage. Use a pipe tape for sealing. Recommended tightening torque is R 1/8: Set between 7 and 9 N·m.

Note 2) Not applicable to water as fluid because its stud is made from aluminum die-casted. Water may cause corrosion and block the air passage. Use a pressure gauge with wetted parts made from stainless steel, G46-□-X3. (Note: Take care when using G36-□-01M, whose wetted part is made from brass. Some corrosion may result.) Design system to not be affected by water hammer when using water as fluid. Similarly, when using other fluids, please consult with SMC, to prevent corrosion-related problems.

Model (Standard)

Model	Pressure range ⁽¹⁾	Indication unit	Connection thread	Note
	MPa			
G36-2-01	0 to 0.2	MPa	R 1/8	—
G36-4-01	0 to 0.4			
G36-7-01	0 to 0.7			
G36-10-01	0 to 1.0			
GA36-10-01	0 to 1.0			

Note 1) Do not apply pressure more than the maximum display pressure. This will cause a malfunction.

Model (Made to Order)

Other versions of this unit can be made on a made-to-order basis. Please consult with SMC for details, as delivery times may be extended.

Model	Pressure range ⁽¹⁾		Indication unit	Connection thread	Note
	MPa	psi			
G36-10-01-X2	0 to 1.0	—	MPa	R 1/8	Plated stem (Ni)
G36-P2-01-X30	0 to 0.2	0 to 30	MPa, psi		—
G36-P10-01-X30	0 to 1.0	0 to 150			
G36-15-01	0 to 1.5	—	MPa		

Note 1) Do not apply pressure more than the maximum display pressure. This will cause a malfunction.

Pressure Gauge for General Purpose/With Limit Indicator *Series G36/GA36*

How to Order

G **36** - **10** - **01** - **Option**

Size

Symbol	Outside diameter
36	ø37.5

Type

Symbol	Type
Nil	Back side thread
A	Vertical side thread

Pressure gauge

Connection thread

Symbol	Size
01	R 1/8

Max. display pressure

Symbol	Unit
2	0.2 MPa
4	0.4 MPa
7	0.7 MPa
10	1.0 MPa
15	1.5 MPa
P2 (Note)	0.2 MPa, 30 psi
P10 (Note)	1.0 MPa, 150 psi

Note) This symbol must be used with Option "X30."

Option

Symbol	Specifications
Nil	—
M	M5 (Female thread)

Note) Use M5 female thread when piping onto a panel.

Option

Symbol	Specifications
Nil	—
X2	Nickel plated
X4	Oil-free (Wetted parts degrease washing)
X30	Both MPa and psi

Note 1) X3 (wetted parts stainless steel) specifications is not available.

Note 2) Cover ring assembly is not available.

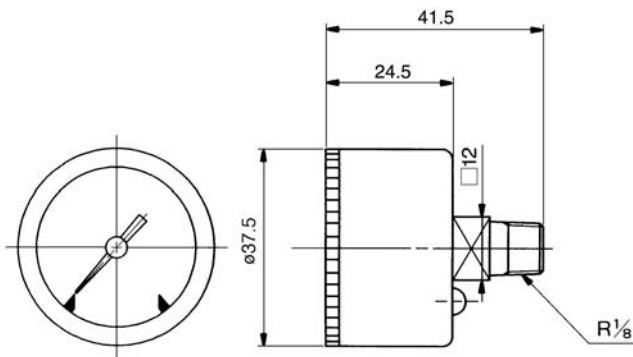
G

GS

PPA

Dimensions

G36



GA36

