



The Timken Company

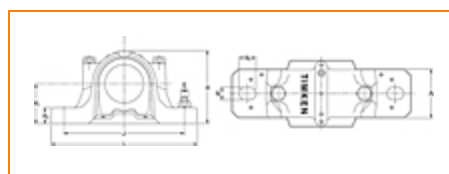
4500 Mt Pleasant St. NW

N. Canton, OH 44720

Phone: (234) 262-3000

E-Mail: CustomerCAD@timken.com • **Web site:** www.timken.com

Housing – Bearing – Seal SNT 518-615 - 21315 - TSNG315, SNT Cylindrical Bore Plummer Block Housed Units



[Types of Components](#) | [Housing](#) | [Bearing](#) | [Dimensions](#) | [Specifications](#)

Types of Components

Housing	SNT 518-615
Bearing	21315
Locating Rings (width x OD)	SR160X14
Seal Type	Double Lip
Seal	TSNG315
End Cover ¹	EC518-615

Housing

Material	Cast Iron
Bolt Qty	2
Housing Mass	13.1 Kg

Bearing



Cage Type	EJ
C1 Dynamic Load Rating	322
C0 Static Load Rating	321
Max Oil Speed	4300
Max Grease Speed	3600

Dimensions



Shaft Diameter da	75 mm
Shaft Diameter db	85 mm
A	140.00 mm
A1	100 mm
G	M20
H	194 mm
H1	100.0 mm
H2	35.0 mm
Jmax	295 mm
Jmin	285 mm
J	290.00 mm
L	345.00 mm
N1	28 mm
N	22 mm

Specifications

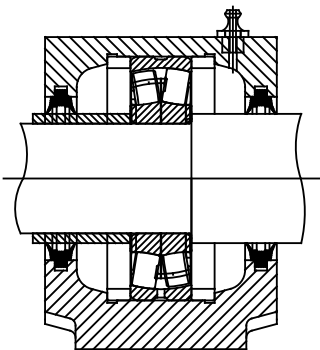
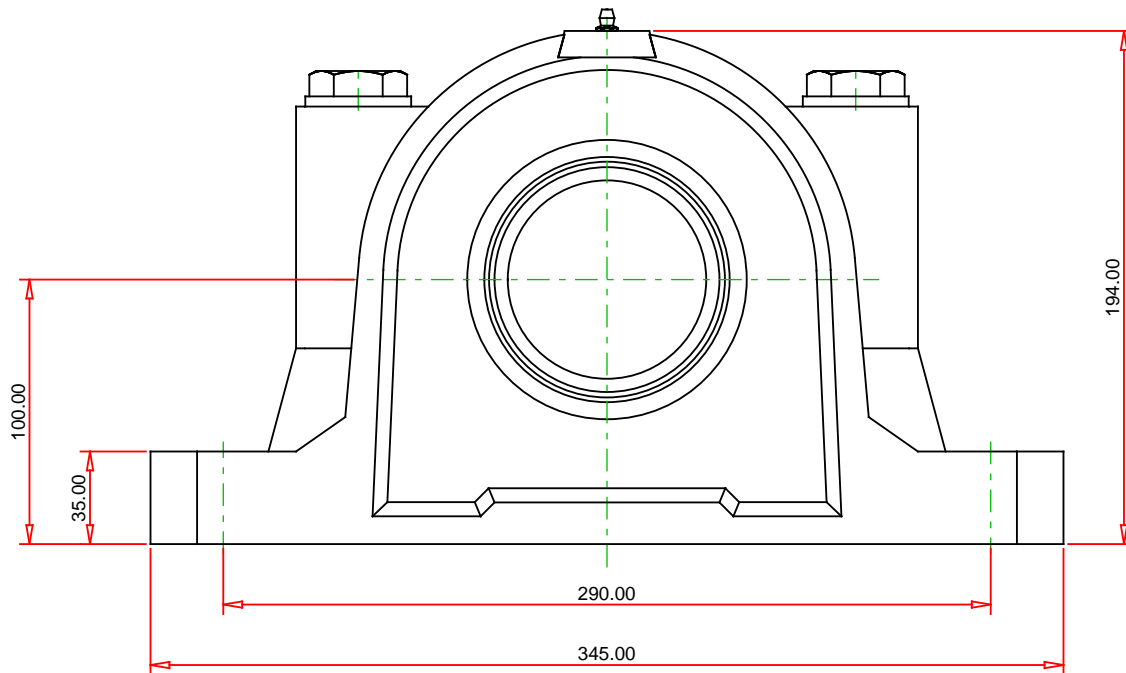
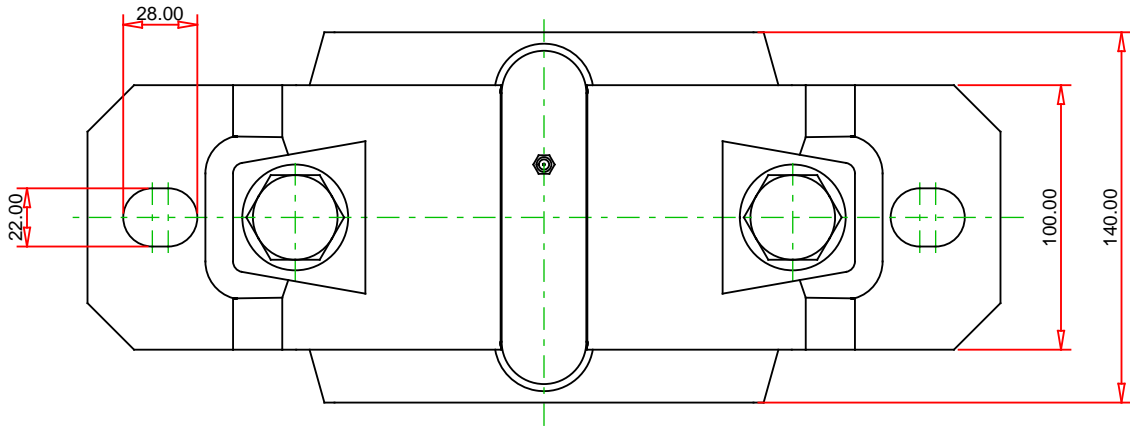
UPC Code

9999999999

Alternate Part Name

SNT518-615 - 21315 - TSNG315

¹ Two seals are required for a thru shaft application. One end cover can be used if application is not a thru shaft design. In this case, only one seal is required.



Note: Section View not to Scale

METRIC UNITS

Housing SNT 518-615
Bearing 21315
Seal (Quantity 2) TSNG315
Seal Type Double Lip
Locating Ring (Quantity 2) SR160X14

TIMKEN®

THE TIMKEN COMPANY
NORTH CANTON, OHIO USA

SNT 518-615 - 21315 - TSNG315
SNT Cylindrical Bore Plummer Block Housed Units

C1 Dynamic Load Rating (2 rows)	322 kN
C0 Static Load Rating	321 kN
Max Oil Speed	4300 RPM
Max Grease Speed	3600 RPM
Material	Cast Iron

Every reasonable effort has been made to ensure the accuracy of the information contained in this writing, but no liability is accepted for errors, omissions or for any other reason.

FOR DISCUSSION ONLY