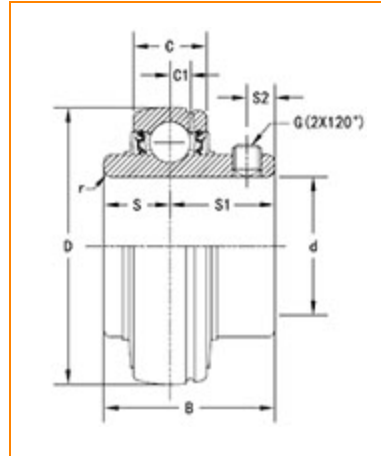




The Timken Company
 4500 Mt Pleasant St. NW
 N. Canton, OH 44720
Phone: (234) 262-3000

E-Mail: CustomerCAD@timken.com • **Web site:** www.timken.com

Part Number UC208, UC 200 Wide Inner Ring Ball Bearings - Set Screw Locking



[Specifications](#) | [Dimensions](#) | [Basic Load Ratings](#)

Specifications

Item #	UC208
Bore Type	Cylindrical bore
Bearing Type	Ball Bearing
Shaft Size d	40 mm
Weight	1.5 lb 0.70 Kg
Locking Style	Set Screw Locking

Dimensions

Outside Diameter D	80.000 mm 3.1500 in
Outside Ring Width C	21.000 mm 0.827 in

	0.827 in
Radius r	1.1 mm 0.043 in
Groove Position C1	5.90 mm 0.232 in
Center of Bearing from End S	19 mm 0.748 in
Dimension S1	30.20 mm 1.189 in
Set Screw Distance S2	8.00 mm 0.315 in
Set Screw Size	M8×1
Number of Set Screws	2
Angle between Set Screws	120 °

Basic Load Ratings

Static Load Rating	4002 lbf 17800 N
Dynamic Load Rating	6542 lbf 29100 N

