



The Timken Company

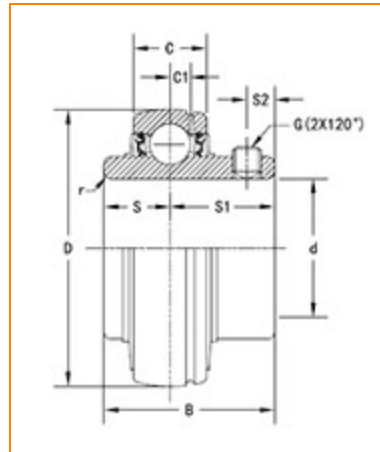
4500 Mt Pleasant St. NW

N. Canton, OH 44720

Phone: (234) 262-3000

E-Mail: CustomerCAD@timken.com • **Web site:** www.timken.com

Part Number UC215, UC 200 Wide Inner Ring Ball Bearings - Set Screw Locking



[Specifications](#) | [Dimensions](#) | [Basic Load Ratings](#)

Specifications

Bore Type	Cylindrical bore
Bearing Type	Ball Bearing
Shaft Size d	75 mm
Locking Device	Set Screw Locking

Dimensions

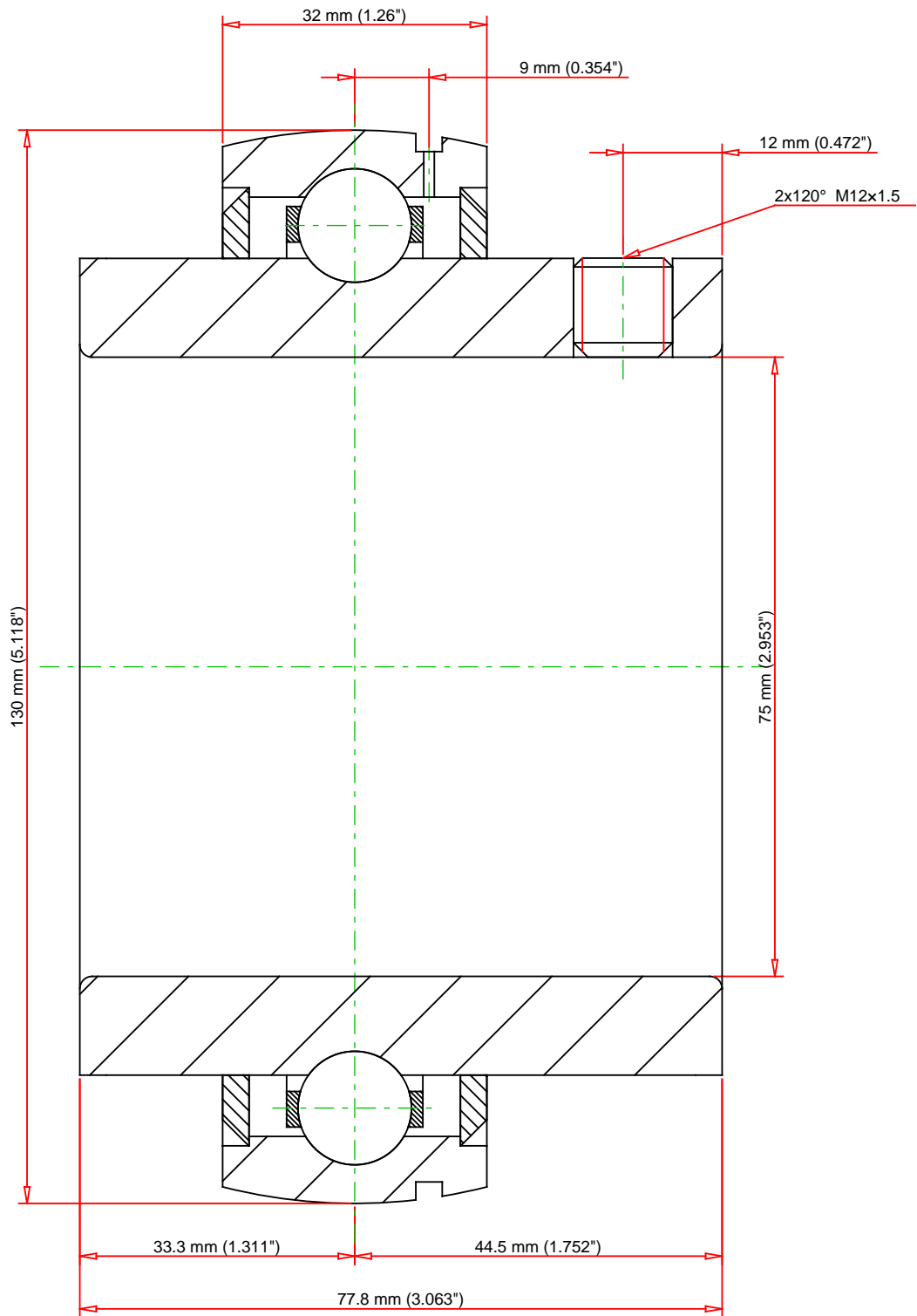
Outside Diameter D	130.000 mm 5.1180 in
Outside Ring Width C	32 mm 1.26 in
Radius r	1.5 mm 0.059 in



Groove Position C1	9 mm 0.354 in
Center of Bearing from End S	33.3 mm 1.311 in
Dimension S1	44.5 mm 1.752 in
Set Screw Distance S2	12 mm 0.472 in
Set Screw Size	M12×1.5
Number of Set Screws	2
Angle between Set Screws	120 °

Basic Load Ratings

Static Load Rating	48300 N 10858 lbf
Dynamic Load Rating	67400 N 15152 lbf



Weight		4.9 lb	2.2 kg	<div>TIMKEN®</div> <div>THE TIMKEN COMPANY</div> <div>NORTH CANTON, OHIO USA</div>	UC215		
					UC 200 Wide Inner Ring Ball Bearings - Set Screw Locking		
				Basic Load Ratings - C _r		15152 lbf	67400 N
				Load Ratings - C _{0r}		10858 lbf	48300 N
Every reasonable effort has been made to ensure the accuracy of the information contained in this writing, but no liability is accepted for errors, omissions or for any other reason.					FOR DISCUSSION ONLY		