



FAG

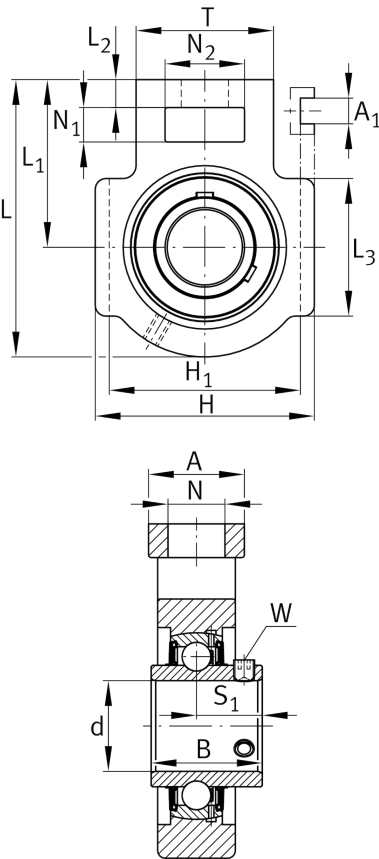
UCT208-J7

Take-up housing unit

Schaeffler ID:
0822296940000

Housing units UCT, cast iron housing, radial insert ball bearing with grub screws in inner ring, RSR seals, for linear motion

Technical information



Main Dimensions & Performance Data

d	40 mm	Bore diameter
H	114 mm	Height
L	144 mm	Length total
	2,372 kg	Weight

Dimensions

L ₁	88 mm	Distance shaft axis
L ₂	16 mm	Length fixed link
L ₃	83 mm	Length guidance groove
A	49 mm	Width housing fixing side
N ₁	19 mm	Width recess
N ₂	49 mm	Height recess
T	83 mm	Height housing fixing side
Q	M6	Connection thread lubrication
A ₂	33 mm	Width housing

Mounting dimensions

A ₁	16 mm	Width guidance groove
	0,2 mm	Upper width guidance groove tolerance
H ₁	102 mm	Distance guidance grooves
	-0,5 mm	Lower distance guidance groove tolerance
N	29 mm	Fixing bore

Additional information

T208	Housing
UC208	Bearing designation