

Miniature One-touch Fittings

One-touch Mini

Series KJ

Applicable Tubing: $\varnothing 3.2$, $\varnothing 4$, $\varnothing 6$
 Connection Thread: M3, M5, R 1/8



Guide 1

Guide 2

Chuck

Suitable for use with nylon, soft nylon and urethane.
 Large retaining force.
 Has large retaining force.

Seal

Can be used for a wide range of pressures from a low vacuum up to a pressure of 1.0 MPa

The use of a special profile ensures sealing and reduces resistance when the tube is inserted.

Gasket

Release button (Light gray)

Light force for removal

When the fitting is removed from the tubing, the chuck and collet are released, thus preventing them from biting into the tube to an unnecessary degree. Unique shape allows easy tube release.

Tube

Body (White)

O-ring

Stud

Effective when piping in a confined space.

- The body and the threaded portion can rotate (for positioning to some extent).
- Stud is electroless nickel plated.
- Standard with preapplied thread seal 1/8

PAT.PEND

Optimum piping in less space with 20% reduction of the outside diameter

Thread seal is standard.

Copper-free specifications
 (With electroless nickel plated.)

Possible to use in vacuum to -100 kPa



Applicable Tubing

Tubing material	Nylon, Soft nylon, Polyurethane
Tubing O.D.	$\varnothing 3.2$, $\varnothing 4$, $\varnothing 6$

Specifications

Fluid	Air/Water ^{Note)}	
Maximum operating pressure	1.0 MPa	
Operating vacuum pressure	-100 kPa	
Proof pressure	3.0 MPa	
Ambient and fluid temperature	-5 to 60°C, Water: 0 to 40°C (No freezing)	
Thread	Mounting section	JIS B 0203 (Taper thread for piping) JIS B 0209, Class 2 (Metric coarse thread)
	Nut section	JIS B 0211 Class 2 (Metric fine thread)
Thread seal (Standard)	With thread seal	
Copper-free (Standard)	Brass parts are all electroless nickel plated.	



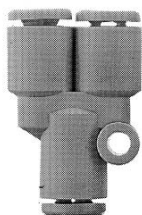
Note) Applicable for general industrial water. Please consult with SMC if using for other kinds of fluid. Also, the surge pressure must be under the maximum operating pressure.

Principal Parts Material

Body	Stainless steel 303, C3604BD, PBT
Stud	C3604BD (Thread portion)
Chuck, Guide 2	Stainless steel 304
Release button, Guide 1	POM
Seal, O-ring	NBR
Gasket	Stainless steel 304, NBR

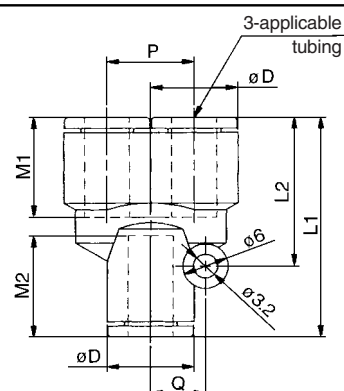
Series KJ

Union “Y”: KJU

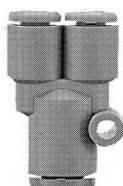


Applicable tubing O.D. (mm)	Model	Note)		L1	L2	P	Q	M1	M2	Effective area (mm ²)		Weight (g)
		øD								Nylon	Urethane	
3.2	KJU23-00	8.4	28.5	19	8.4	5.8	12.7	12.9	12.9	3.2	2.7	2.6
4	KJU04-00	9.3	27.9	18.3	9.3	6.3	12.7	12.9	12.9	4.5	4.5	3
6	KJU06-00	11.6	31.2	21.6	11.6	7.3	13.5	13.7	11	11	11	4.7

Note) øD: Max. diameter

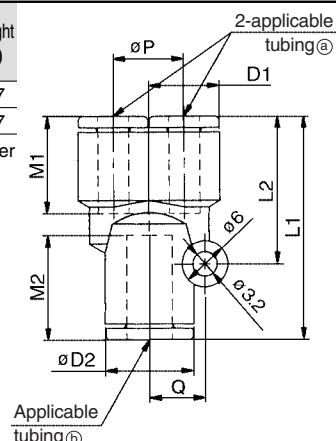


Different Diameter Union “Y”: KJU

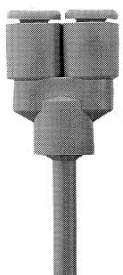


Applicable tubing O.D. (mm)		Model	Note)		L1	L2	P	Q	M1	M2	Effective area (mm ²)		Weight (g)
a	b		øD1	øD2							Nylon	Urethane	
3.2	4	KJU23-04	8.4	9.3	27.5	18.3	8.4	6.3	12.7	12.9	4.5	4.5	2.7
4	6	KJU04-06	9.3	11.6	29.2	19.3	9.3	7.3	12.7	13.7	8	8	3.7

Note) øD1, øD2: Max. diameter

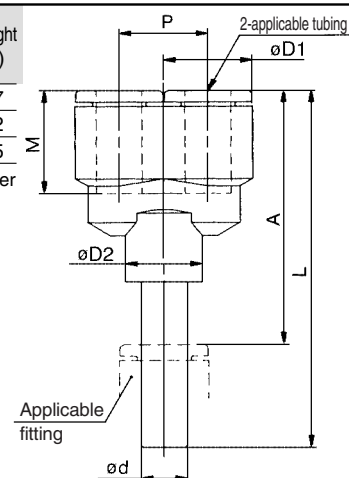


Plug-in “Y”: KJU

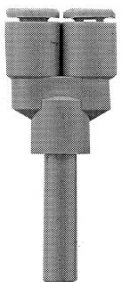


Applicable tubing O.D. (mm)	Applicable fitting size ød	Model	Note)		L	P	A	M	Effective area (mm ²)		Weight (g)
			øD1	øD2					Nylon	Urethane	
3.2	3.2	KJU23-99	8.4	10	43.5	8.4	34.1	12.7	3.2	2.7	2.7
4	4	KJU04-99	9.3	10	44.7	9.3	35.3	12.7	4.5	4.5	3.2
6	6	KJU06-99	11.6	10	47.8	11.6	37.6	13.5	11	11	4.5

Note) øD1: Max. diameter



Different Diameter Plug-in “Y”: KJX



Applicable tubing O.D. (mm)	Applicable fitting size ød	Model	Note)		L	P	A	M	Effective area (mm ²)		Weight (g)
			øD1	øD2					Nylon	Urethane	
3.2	4	KJX23-04	8.4	10	44	8.4	34.6	12.7	4.5	4.5	2.8
4	6	KJX04-06	9.3	10	45.7	9.3	35.5	12.7	8	8	3.5

Note) øD1: Max. diameter

