

A

BALL BEARING HOUSED UNITS

Timken® ball bearing housed units feature a wide-inner-ring ball bearing for additional shaft support. Designed for mounting on straight shafts with a slip fit, these housed units are available in an extensive array of types and sizes to accommodate many industrial applications.

When set screws are used, Timken suggests using Shaft Guarding Technology™, a stainless-steel, hardened band that is inserted in a groove on the inner ring. When the set screws are tightened, they press against the band, tightening the grip on the shaft. Unlike traditional set screws, which can dig into the shaft, there are no nicks, raised metal or permanent shaft damage. The stainless band resists the formation of corrosion on the shaft.

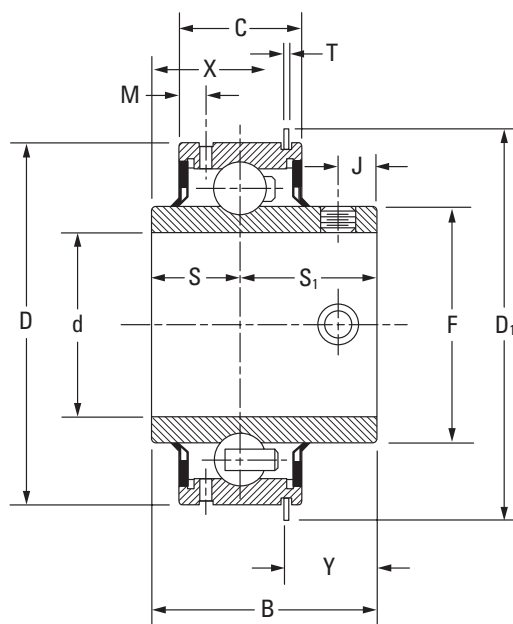
Updates are made periodically to this catalog. Visit www.timken.com for the most recent version of the Timken® Housed Unit Catalog.

TYPICAL INDUSTRIES AND APPLICATIONS

Common industries and applications include agriculture, food processing, fans, blowers, and conveyors.

Engineering.....	A-3
Wide-Inner-Ring Ball Bearings.....	A-25
Ball Bearing Housed Units.....	A-62





Continued from previous page.

Bearing No.	Basic Outer-Ring Size	Shaft Dia. d	O.D. D	Ring Widths												Set Screw Size	Brg. Wt.		Static Load Rating	Extended Dynamic Load Rating
				Inner B	Outer C	S	S ₁	F	J	D ₁	Y	T	M	X						
		in.	mm in.	mm in.	mm in.	mm in.	mm in.	mm in.	mm in.	mm in.	mm in.	mm in.	mm in.	mm in.	mm in.	kg lbs.	N lbs.	N lbs.		
ER32 ⁽¹⁾⁽²⁾ ER35 ⁽²⁾	211	2 3/16	100 3.9370	55.56 2 3/16	30.16 1 3/16	22.22 7/8	33.34 1 5/16	69.85 2 3/4	9.92 25/64	106.4 4 3/16	24.28 61/64	2.4 3/32	7.14 9/32	31.27 1 15/64	M10X1.5 3/8 - 24	1.300 1.084	2.87 2.39	29170.8 6570	47952 10800	
ER39 ⁽¹⁾⁽²⁾	212	2 7/16	110 4.331	65.09 2 9/16	31.75 1 1/4	25.4 1	39.69 1 9/16	76.60 3 1/64	9.92 25/64	116.3 4 37/64	28.24 1.11	2.4 3/32	6.75 1 7/64	36.83 1 29/64	M10X1.5 3/8 - 24	1.450 1.250	3.20 2.87	35875.2 8080	58164 13100	
ER47	215	2 15/16	130 5.1180	77.79 3 1/16	38.1 1 1/2	33.33 1 5/16	44.45 1 3/4	91.68 3 39/64	11.91 15/32	139.7 5 1/2	33.02 1.30	2.8 7/64	6.35 1/4	44.78 1 49/64	M12X1.75 7/16 - 20	2.210 1.950	4.88 4.37	44844 10100	68820 15500	
ER51	216	3 3/16	140 5.5110	77.79 3 1/16	42.86 1 11/16	28.58 1 1/8	49.21 1 15/16	98.43 3 7/8	13.49 17/32	149.6 5 57/64	35.32 1.39	2.8 7/64	11.11 7/16	42.47 1 43/64	M12X1.75 7/16 - 20	3.450 3.050	7.61 6.87	54168 12200	79476 17900	
ER55	217	3 7/16	150 5.905	85.72 3 3/8	49.21 1 15/16	34.16 1 11/32	51.57 2 1/32	104.84 4 1/8	11.91 7/16	159.5 6 1/4	34.53 1.36	2.8 7/64	11.02 7/16	51.21 2 1/64	M12X1.75 7/16 - 20	— —	— —	61716 13900	92796 20900	

⁽¹⁾DD low-drag/low-torque version is available.

⁽²⁾Available with Shaft Guarding Technology modification.

NOTE: Bore tolerances: 1.1874 in. – 2.1874 in. nominal to +0.013 mm, +0.0005 in.
2.2500 in. – 3.1874 in. nominal to +0.015 mm, +0.0006 in.

BALL BEARING HOUSED UNITS

Timken® housed units are available in a wide variety of types and sizes to accommodate a complete range of operating conditions.

- **Sizes:** 12.7 mm – 125.4 mm (1/2 in. – 4 15/16 in.). Size range is dependent upon duty series.
- **Industries and applications:** Agriculture, food processing, conveyors, fans and blowers.
- **Features:** Most popular design features cast-iron housing. Other material options include malleable iron, polymer, pressed-steel or rubber.
- **Benefits:** Combines bearing, housing, seal and locking system into one device for easy installation. Operates even when the shaft is not perfectly aligned with the mounting surface.

Nomenclature.....	A-65
Introduction.....	A-66

CAST-IRON HOUSED UNITS

RAK, TAK, LAK Industrial Series	A-69
YAK Industrial-Series Set Screw Units	A-71
VAK Standard Series.....	A-72
SAK Standard Series.....	A-73
RAS, TAS, LAS Industrial Series	A-74
RASC Industrial-Series Concentric Collar.....	A-76
YAS Industrial-Series Set Screw Units	A-77
VAS Standard Series.....	A-78
SAS Standard Series.....	A-79
RAKH Industrial Series	A-80
RAKHL Expansion Series	A-81
YASM Medium-Duty Series Set Screw Lock	A-82
STB Series.....	A-83
VTB Series.....	A-84
RAO, LAO Heavy Series	A-85
RSA, LSA Industrial Series.....	A-86
RSOA, LSAO Heavy Series	A-88
SAL Industrial Series, Fixed and Floating Types.....	A-89
SAOL Heavy Series, Fixed and Floating Types	A-90
DRNR Industrial Series.....	A-92

CAST-IRON FLANGED UNITS

RCJ, TCJ, LCJ Industrial Series.....	A-93
RCJC Industrial-Series Concentric Collar.....	A-95

YCJ Industrial Set Screw Series.....	A-96
VCJ Standard Series.....	A-98
SCJ Standard Series.....	A-99
RCJO, LCJO Heavy Series	A-100
YCJM Medium-Duty Series Set Screw Lock	A-101
YCJTM Medium-Duty Series Set Screw Lock	A-102
RCJT, TCJT, LCJT Industrial Series.....	A-103
RCJTC Industrial-Series Concentric Collar.....	A-104
VCJT Standard Series.....	A-105
YCJT Industrial Set Screw Series.....	A-106
SCJT Standard Series.....	A-107
FLCT Standard Series	A-108
RFC Industrial Piloted-Series Concentric Collar.....	A-109
RC Series.....	A-110

MALLEABLE-IRON FLANGED UNITS

GVFD, GVFDR Relubricatable Series –	
VFD, VFDNR Non-Relubricatable Series.....	A-111
GRFD, GRFDR Relubricatable Series –	
RFD, RFDNR Non-Relubricatable Series.....	A-112

