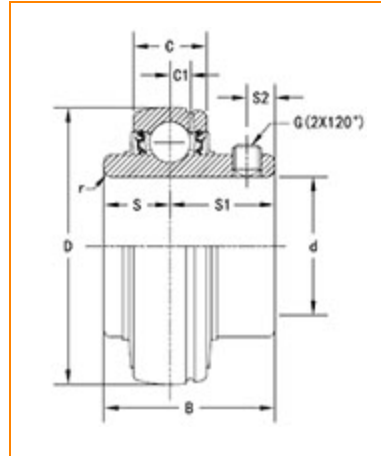




**The Timken Company**  
 4500 Mt Pleasant St. NW  
 N. Canton, OH 44720  
**Phone:** (234) 262-3000

**E-Mail:** [CustomerCAD@timken.com](mailto:CustomerCAD@timken.com) • **Web site:** [www.timken.com](http://www.timken.com)

## Part Number UC207, UC 200 Wide Inner Ring Ball Bearings - Set Screw Locking



[Specifications](#) | [Dimensions](#) | [Basic Load Ratings](#)

### Specifications

Item #	UC207
Bore Type	Cylindrical bore
Bearing Type	Ball Bearing
Shaft Size d	35 mm
Weight	1.12 lb 0.5 Kg
Locking Style	Set Screw Locking

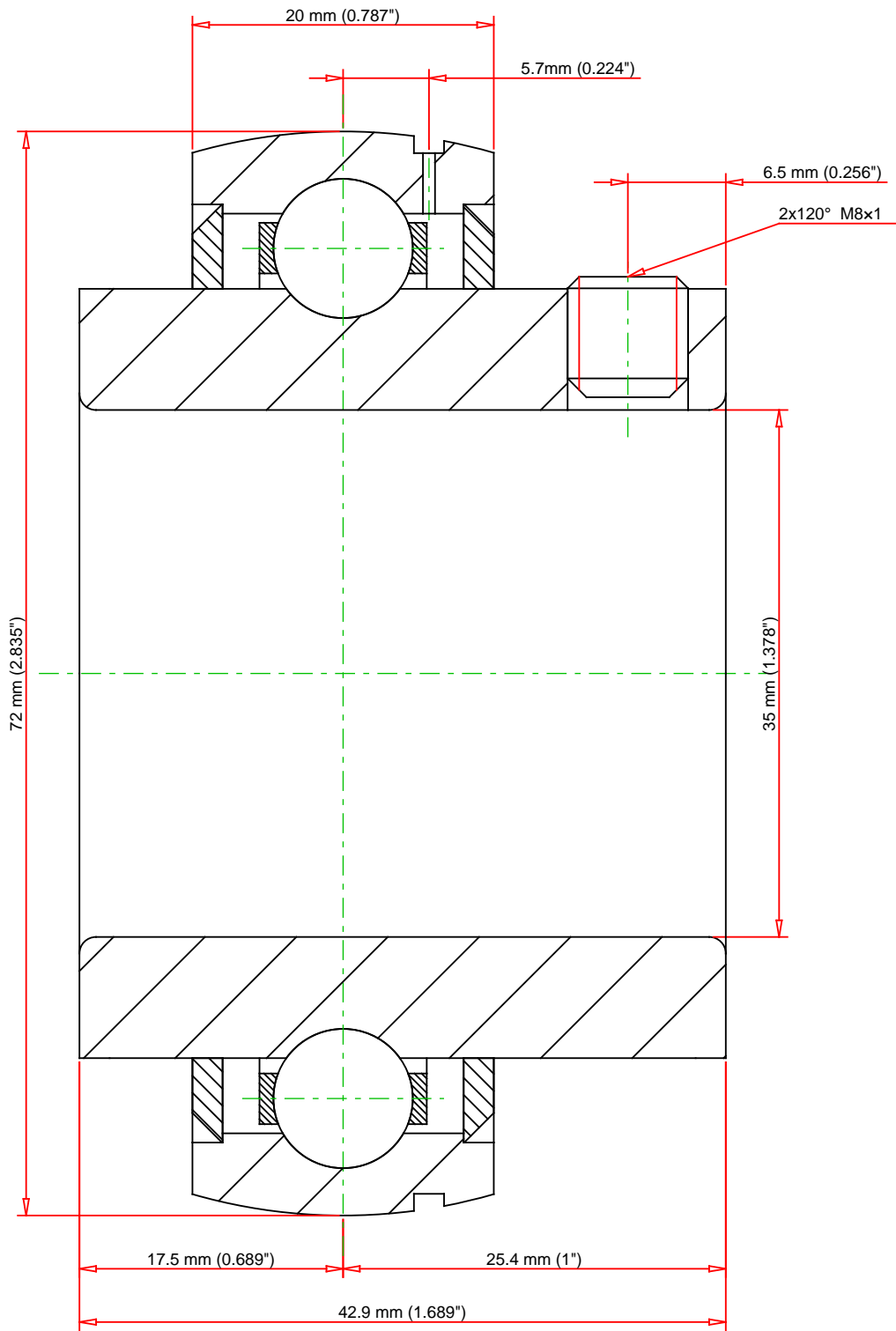
### Dimensions



Outside Diameter D	72.000 mm 2.835 in
Outside Ring Width C	20.000 mm 0.787 in

	0.787 in
Radius r	1.1 mm 0.043 in
Groove Position C1	5.70 mm 0.224 in
Center of Bearing from End S	17.5 mm 0.689 in
Dimension S1	25.40 mm 1.000 in
Set Screw Distance S2	6.50 mm 0.256 in
Set Screw Size	M8×1
Number of Set Screws	2
Angle between Set Screws	120 °

## Basic Load Ratings

Static Load Rating	3462 lbf 15400 N
Dynamic Load Rating	5778 lbf 25700 N



Weight	1.12 lb	0.5 kg		<b>UC207</b> UC 200 Wide Inner Ring Ball Bearings - Set Screw Locking
				
			Basic Load Ratings - C <sub>r</sub>	
Load Ratings - C <sub>0r</sub>		3462 lbf	15400 N	
Every reasonable effort has been made to ensure the accuracy of the information contained in this writing, but no liability is accepted for errors, omissions or for any other reason.				FOR DISCUSSION ONLY