



**The Timken Company**

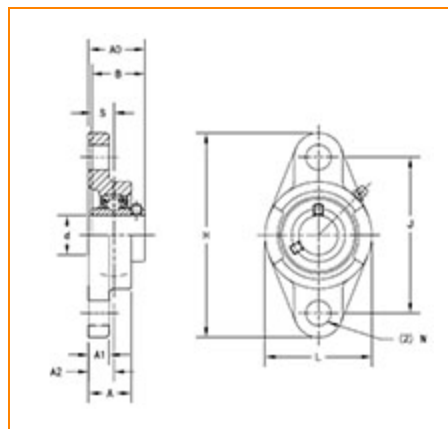
4500 Mt Pleasant St. NW

N. Canton, OH 44720

**Phone:** (234) 262-3000

**E-Mail:** [CustomerCAD@timken.com](mailto:CustomerCAD@timken.com) • **Web site:** [www.timken.com](http://www.timken.com)

## Part Number UCFL311, UCFL 300 Two-Bolt Flanged Mounted Bearings - Set Screw Locking



[Specifications](#) | [Dimensions](#) | [Basic Load Ratings](#)

### Specifications

<b>Bearing Number</b>	UC311
<b>Shaft Size d</b>	55 mm
<b>Locking Style</b>	Set Screw Locking
<b>Housing Construction</b>	Two-Bolt Flange

### Dimensions

<b>Total Length H</b>	250 mm 9.844 in
<b>Total Height L</b>	150 mm 5.906 in



**Housing Width A** 52 mm  
2.063 in

**Bolt Hole Spacing J** 198 mm  
7.795 in

**Bolt Hole Size N** 25 mm  
0.984 in

**Flange Thickness A1** 20 mm  
0.787 in

**Center of Bearing from Housing End A2** 30 mm  
1.181 in

**Inner Ring Width B** 66 mm  
2.598 in

**Center of Bearing from Bearing End S** 25 mm  
0.984 in

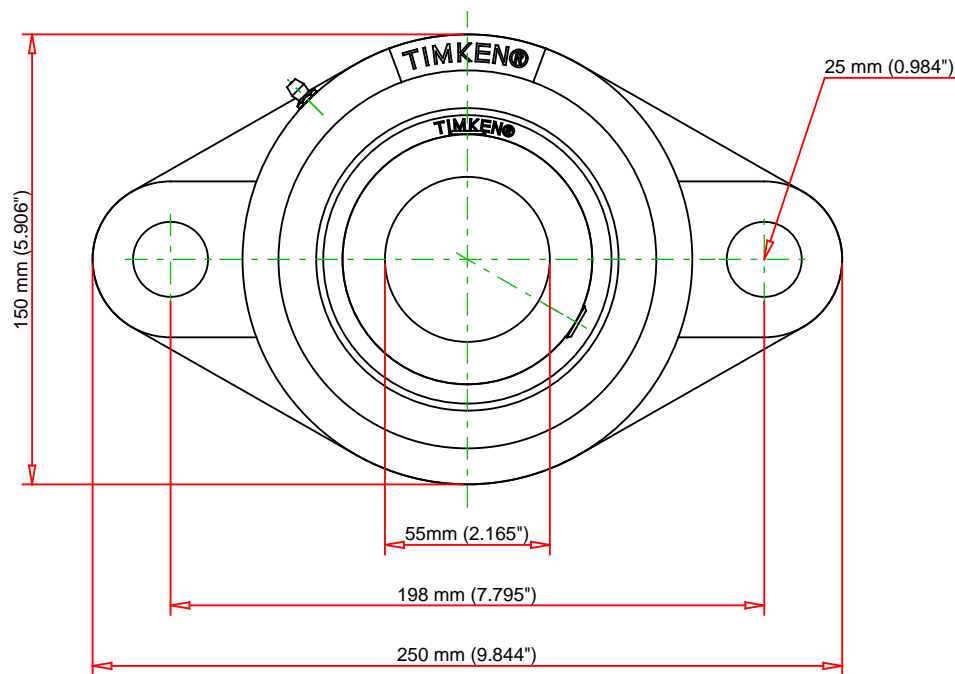
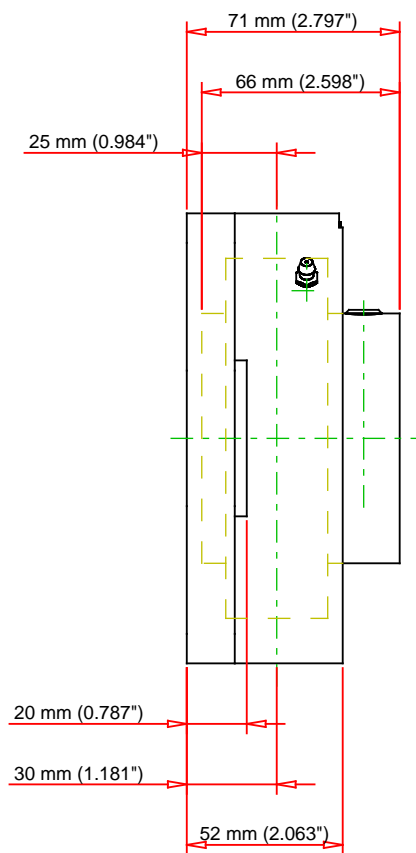
**Dimension A0** 71 mm  
2.797 in

**Bolt Size** M22

## Basic Load Ratings

**Static Load Rating** 45000 N  
10117 lbf

**Dynamic Load Rating** 71600 N  
16096 lbf



Bearing Number	UC311			
Load Ratings - C <sub>r</sub>	16096	lbf	71600	N
Load Ratings - C <sub>0r</sub>	10117	lbf	45000	N
Weight	11.7	lb	5.3	kg
Bolt Size	M22			

**TIMKEN**

THE TIMKEN COMPANY  
NORTH CANTON, OHIO USA

**UCFL311**  
UCFL 300 Two-Bolt Flanged Mounted  
Bearings - Set Screw Locking

Every reasonable effort has been made to ensure the accuracy of the information contained in this writing, but no liability is accepted for errors, omissions or for any other reason.

**FOR DISCUSSION ONLY**