



FAG

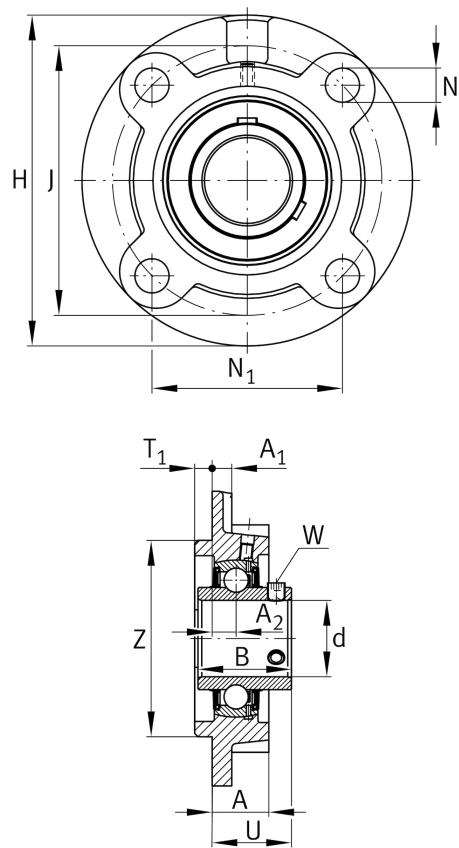
UCFC215-J7

Flanged housing unit

Schaeffler ID:
0823025610000

Flanged housing unit UCFC

Technical information



Main Dimensions & Performance Data

d	75 mm	Bore diameter
H	220 mm	Height flange
U	62.5 mm	Total height unit
C _r	66,000 N	Basic dynamic load rating, radial
C _{0r}	44,500 N	Basic static load rating, radial
C _{ur}	1,880 N	Fatigue load limit, radial
	7.22 kg	Weight

Dimensions

A	40 mm	Height housing
A ₁	18 mm	Thickness of flange
A ₂	18 mm	Distance raceway
B	77.8 mm	Width
Q	M6	Connection thread lubrication

Mounting dimensions

J	184 mm	Distance fixing bore
J	184 mm	Pitch circle diameter (holes)
N	19 mm	Fixing bore
N ₁	130.1 mm	Distance fixing bore
T ₁	16 mm	Height spigot
Z	160 mm	Diameter spigot
	h8	Diameter spigot clearance
n	4	Number of screwing holes

Additional information

1	Number of housings
FC215	Housing
UC215	Bearing designation