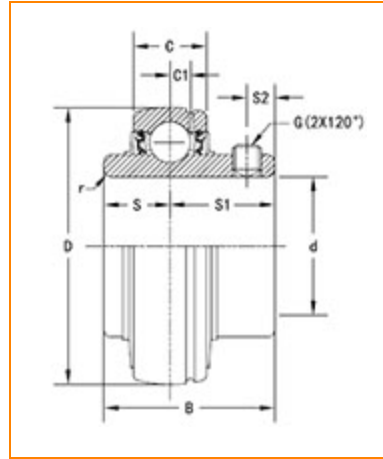




**The Timken Company**  
 4500 Mt Pleasant St. NW  
 N. Canton, OH 44720  
**Phone:** (234) 262-3000

**E-Mail:** [CustomerCAD@timken.com](mailto:CustomerCAD@timken.com) • **Web site:** [www.timken.com](http://www.timken.com)

## Part Number UC206, UC 200 Wide Inner Ring Ball Bearings - Set Screw Locking



[Specifications](#) | [Dimensions](#) | [Basic Load Ratings](#)

### Specifications

Item #	UC206
Bore Type	Cylindrical bore
Bearing Type	Ball Bearing
Shaft Size d	30 mm
Weight	0.7 lb 0.3 Kg
Locking Style	Set Screw Locking

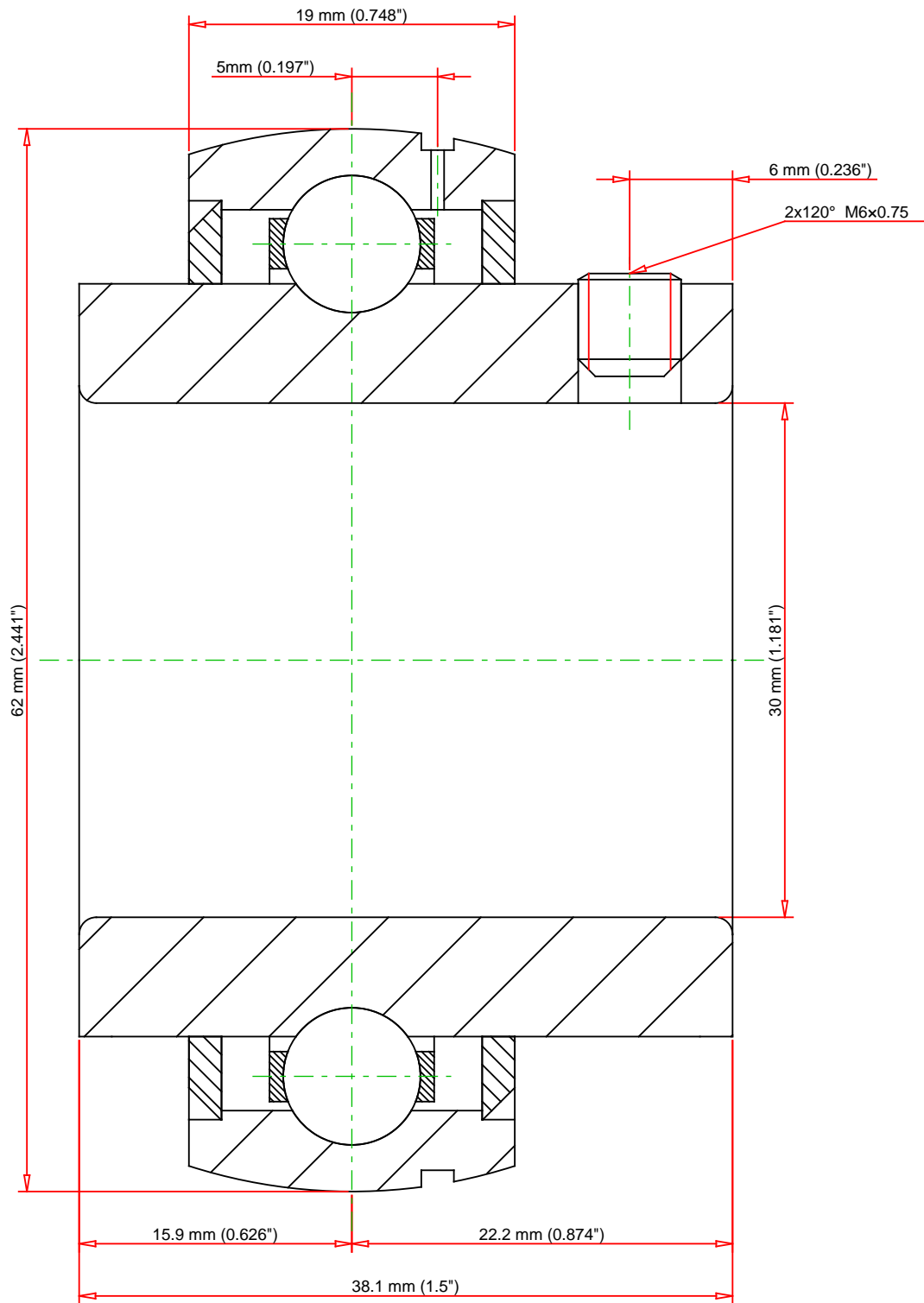
### Dimensions


Outside Diameter D	62.000 mm 2.441 in
Outside Ring Width C	19.000 mm 0.748 in

	0.748 in
Radius r	1 mm 0.039 in
Groove Position C1	5.00 mm 0.197 in
Center of Bearing from End S	15.9 mm 0.626 in
Dimension S1	22.20 mm 0.874 in
Set Screw Distance S2	6.00 mm 0.236 in
Set Screw Size	M6×0.75
Number of Set Screws	2
Angle between Set Screws	120 °

## Basic Load Ratings

Static Load Rating	2540 lbf 11300 N
Dynamic Load Rating	4385 lbf 19500 N



Weight	0.7 lb	0.3 kg		<b>UC206</b> UC 200 Wide Inner Ring Ball Bearings - Set Screw Locking	
					<b>THE TIMKEN COMPANY</b> NORTH CANTON, OHIO USA
			Basic Load Ratings - C <sub>r</sub>	4385 lbf	
			Load Ratings - C <sub>0r</sub>	2540 lbf	11300 N
Every reasonable effort has been made to ensure the accuracy of the information contained in this writing, but no liability is accepted for errors, omissions or for any other reason.				<b>FOR DISCUSSION ONLY</b>	