

40022093. - cubio cupboard

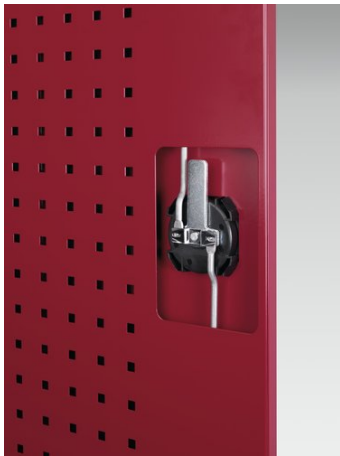
Short Description

cubio cupboard perfo doors mini workshop, 9 drawers

WxDxH: 1300x650x2000mm

Product Images





Additional Information

Description	cubio mini workshop cupboard. Featuring a heavy duty, reinforced steel housing with up to 1 tonne total capacity with double, perfo panel lined, reinforced high doors with a multiplex worktop / shelf, 1x perfo, 1x louvre backpanels, and 9x 125mm drawers with 100% extension slides (75kg U.D.L.). Finished in durable powder coat paint. WxDxH: 1300x650x2000mm.
Width	1300
Depth	650
Height	2000
Customs tariff number	94032080
Product material	Sheet steel
Product surface	Powder coated
Drawer type	Internal
Drawer height 1	125mm
Drawer 1 Internal Dimensions	1175mm x 525mm x 105mm
Drawer height 2	125mm
Drawer 2 Internal Dimensions	1175mm x 525mm x 105mm
Drawer height 3	125mm
Drawer 3 Internal Dimensions	1175mm x 525mm x 105mm
Drawer height 4	125mm
Drawer 4 Internal Dimensions	1175mm x 525mm x 105mm
Drawer height 5	125mm
Drawer 5 Internal Dimensions	1175mm x 525mm x 105mm
Drawer height 6	125mm
Drawer 6 Internal Dimensions	1175mm x 525mm x 105mm
Drawer height 7	125mm
Drawer 7 Internal Dimensions	1175mm x 525mm x 105mm
Drawer height 8	125mm

Drawer 8 Internal Dimensions	1175mm x 525mm x 105mm
Drawer height 9	125mm
Drawer 9 Internal Dimensions	1175mm x 525mm x 105mm
Door type	Perfo
Door height 1	1925 mm
Number of shelves	1

Product Options

Colour:	Anthracite grey
	Crimson red
	Gentian blue
	Light grey