



The Timken Company

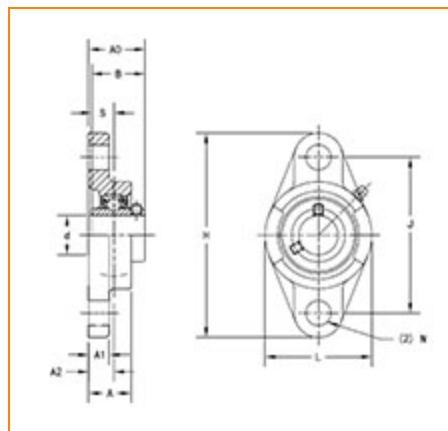
4500 Mt Pleasant St. NW

N. Canton, OH 44720

Phone: (234) 262-3000

E-Mail: CustomerCAD@timken.com • **Web site:** www.timken.com

Part Number UCFL310, UCFL 300 Two-Bolt Flanged Mounted Bearings - Set Screw Locking



[Specifications](#) | [Dimensions](#) | [Basic Load Ratings](#)

Specifications

Bearing Number	UC310
Shaft Size d	50 mm
Locking Style	Set Screw Locking
Housing Construction	Two-Bolt Flange

Dimensions

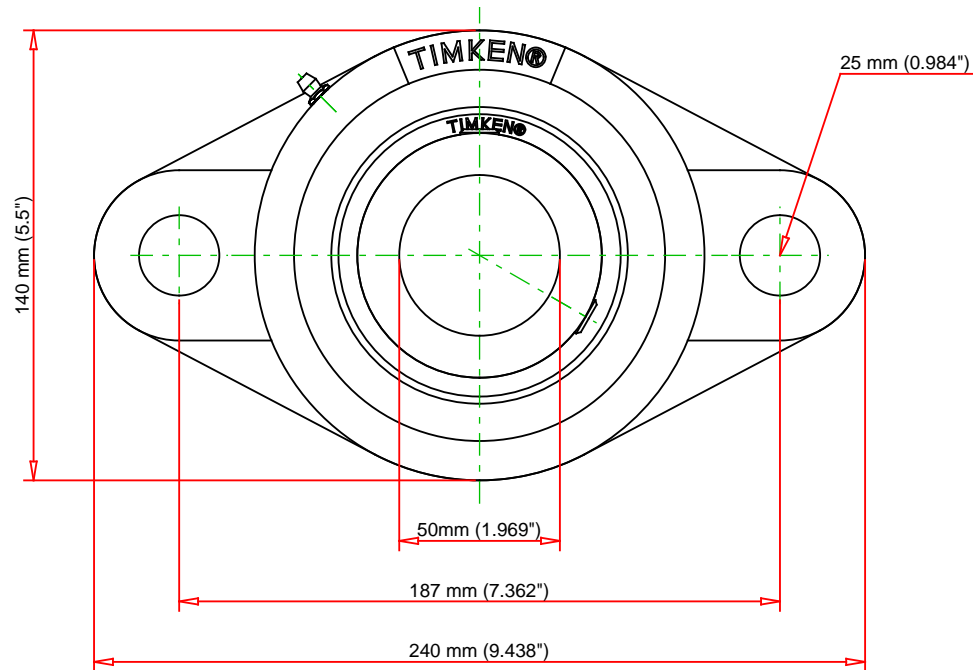
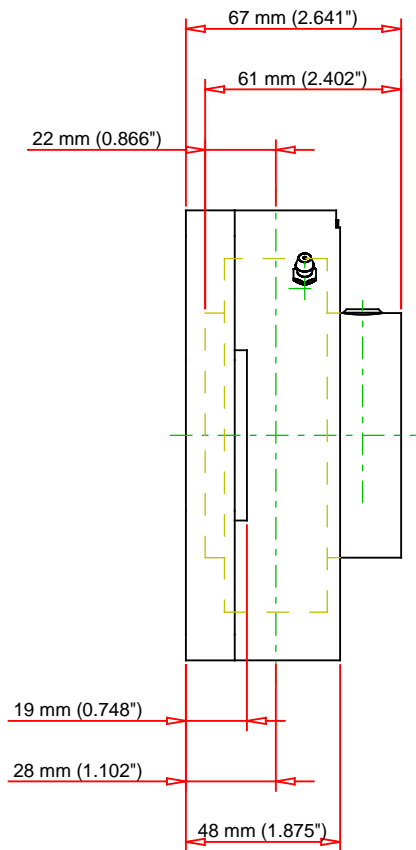
Total Length H	240 mm
Total Height L	140 mm
Housing Width A	48 mm
Bolt Hole Spacing J	187 mm
Bolt Hole Size N	25 mm



Flange Thickness A1	19 mm
Center of Bearing from Housing End A2	28 mm
Inner Ring Width B	61 mm
Center of Bearing from Bearing End S	22 mm
Dimension A0	67 mm
Bolt Size	M22

Basic Load Ratings

Static Load Rating	38300 N
Dynamic Load Rating	62000 N



Bearing Number	UC310			
Load Ratings - C _r	13938	lbf	62000	N
Load Ratings - C _{0r}	8610	lbf	38300	N
Weight	9.7	lb	4.4	kg
Bolt Size	M22			

TIMKEN

THE TIMKEN COMPANY
NORTH CANTON, OHIO USA

UCFL310
UCFL 300 Two-Bolt Flanged Mounted
Bearings - Set Screw Locking

Every reasonable effort has been made to ensure the accuracy of the information contained in this writing, but no liability is accepted for errors, omissions or for any other reason.

FOR DISCUSSION ONLY