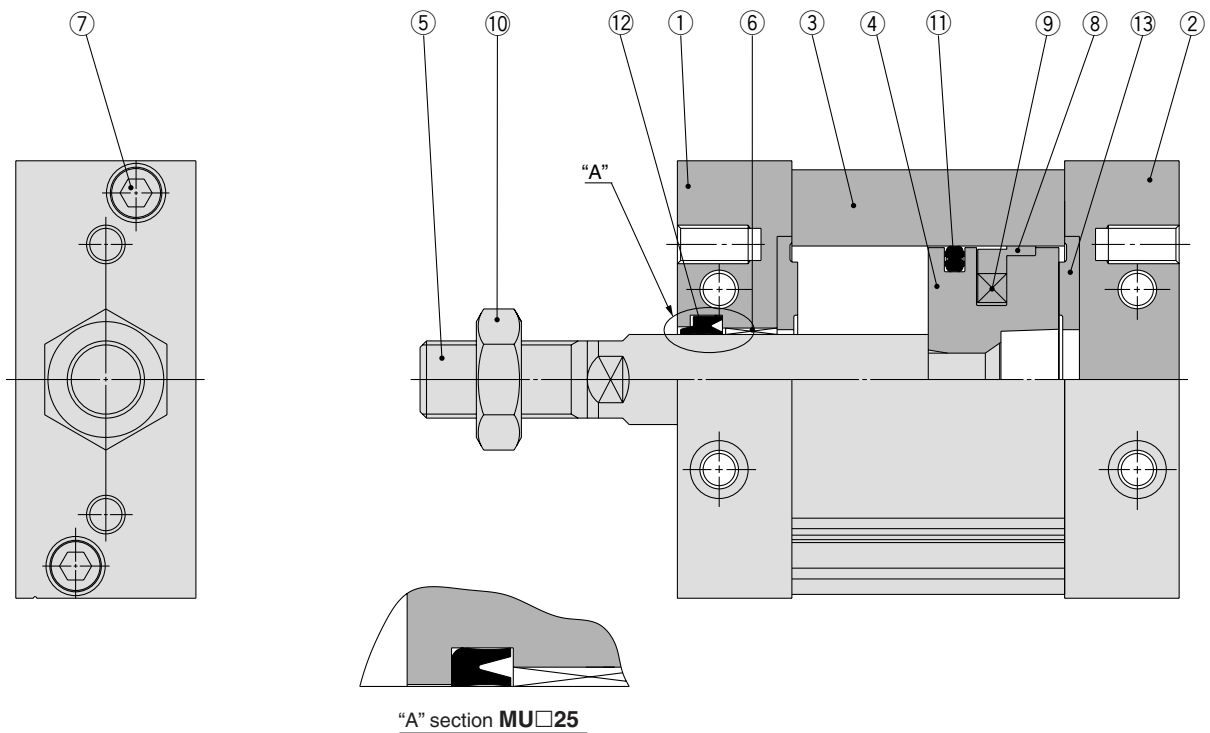


Construction



Component Parts

| No. | Description | Material | Note |
|-----|--------------------------|--------------------------------|--------------------------------------|
| 1 | Rod cover | Aluminum alloy | Anodized |
| 2 | Head cover | Aluminum alloy | Anodized |
| 3 | Cylinder tube | Aluminum alloy | Hard anodized |
| 4 | Piston | Aluminum die-casted | Chromated |
| 5 | Piston rod | Carbon steel | Hard chrome plated |
| 6 | Bushing | Oil-impregnated sintered alloy | |
| 7 | Hexagon socket head bolt | Stainless steel | |
| 8 | Wear ring | Resin | |
| 9 | Magnet | — | Only built-in magnet type |
| 10 | Rod end nut | Rolled steel | Only attached to rod end male thread |
| 11 | Piston seal | NBR | |
| 12 | Rod seal | NBR | |
| 13 | Bumper | Urethane | |

Replacement Parts/Seal Kit

| Bore size (mm) | Kit no. | Contents |
|----------------|----------|------------------------------|
| 25 | MUB25-PS | Set of nos. above ⑪, ⑫, ⑬ |
| 32 | MUB32-PS | |
| 40 | MUB40-PS | |
| 50 | MUB50-PS | |
| 63 | MUB63-PS | |

* Seal kit includes ⑪ to ⑬. Order the seal kit, based on each bore size.

* Since the seal kit does not include a grease pack, order it separately.

Grease pack part no.: GR-S-010 (10 g)