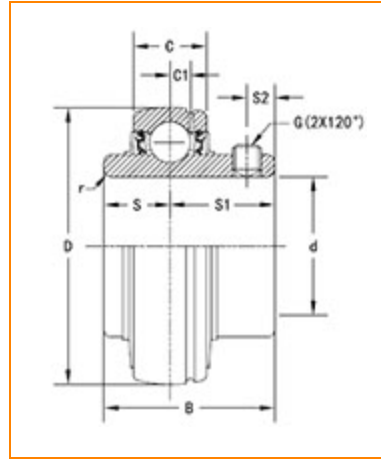




The Timken Company
 4500 Mt Pleasant St. NW
 N. Canton, OH 44720
Phone: (234) 262-3000

E-Mail: CustomerCAD@timken.com • **Web site:** www.timken.com

Part Number UC205, UC 200 Wide Inner Ring Ball Bearings - Set Screw Locking



[Specifications](#) | [Dimensions](#) | [Basic Load Ratings](#)

Specifications

| | |
|---------------|-------------------|
| Item # | UC205 |
| Bore Type | Cylindrical bore |
| Bearing Type | Ball Bearing |
| Shaft Size d | 25 mm |
| Weight | 0.50 lb 0.2 Kg |
| Locking Style | Set Screw Locking |

Dimensions

| | |
|----------------------|-----------------------|
| Outside Diameter D | 52.000 mm 2.047 in |
| Outside Ring Width C | 17.000 mm 0.669 in |

| | |
|------------------------------|----------------------|
| | 0.009 in |
| Radius r | 1 mm 0.039 in |
| Groove Position C1 | 4.50 mm 0.177 in |
| Center of Bearing from End S | 14.3 mm 0.563 in |
| Dimension S1 | 19.80 mm 0.780 in |
| Set Screw Distance S2 | 5.50 mm 0.217 in |
| Set Screw Size | M6×0.75 |
| Number of Set Screws | 2 |
| Angle between Set Screws | 120 ° |

Basic Load Ratings

| | |
|---------------------|---------------------|
| Static Load Rating | 1765 lbf 7850 N |
| Dynamic Load Rating | 3147 lbf 14000 N |

