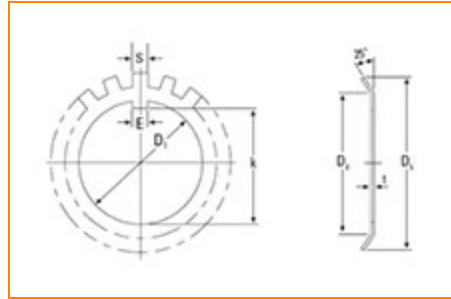




The Timken Company
 4500 Mt Pleasant St. NW
 N. Canton, OH 44720
Phone: (234) 262-3000

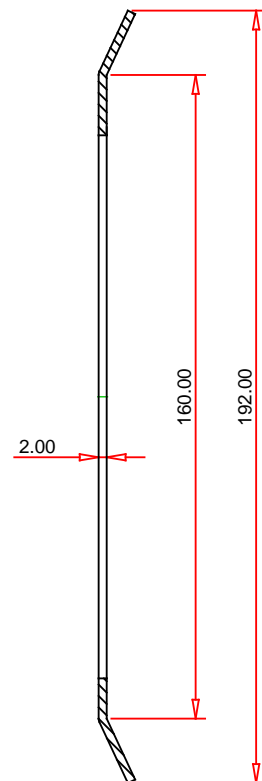
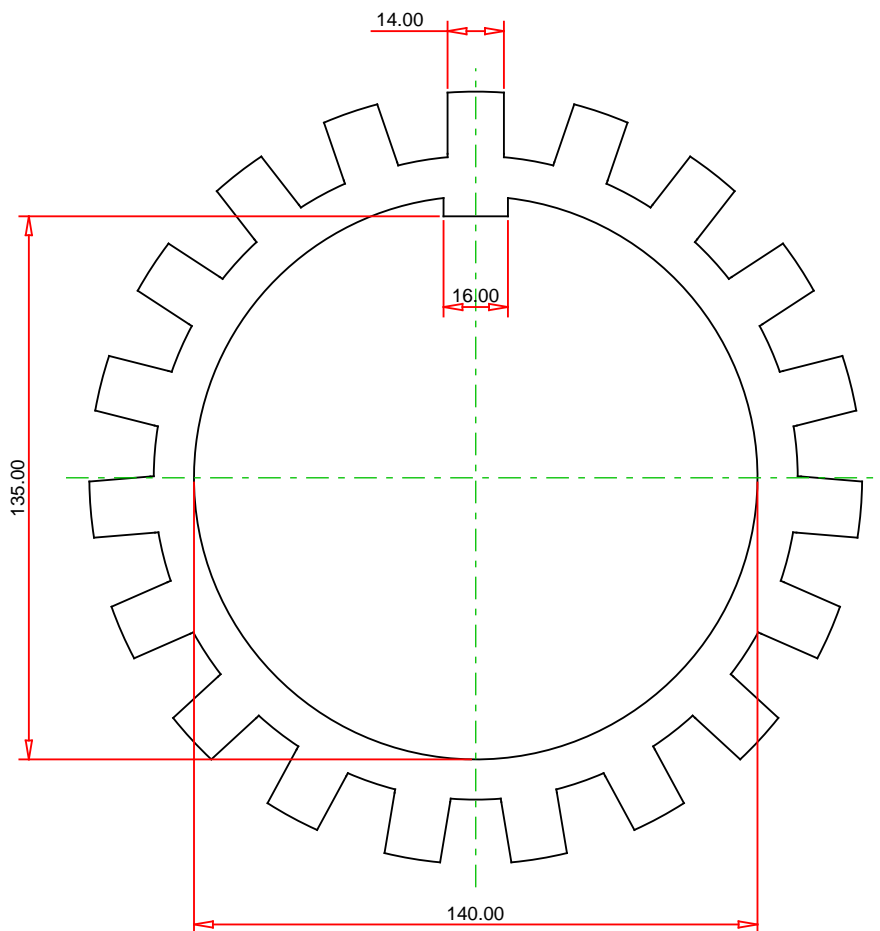
E-Mail: CustomerCAD@timken.com • **Web site:** www.timken.com

Part Number MB 28, Metric Lockwasher



Specifications

D_1	140 mm
k	135.0 mm
E	16 mm
t	2 mm
S	14 mm
D_4	160 mm
D_5	192 mm
No. of Tangs	19
Weight	142 g
Locknut	KM 28



METRIC UNITS

TIMKEN®

THE TIMKEN COMPANY
NORTH CANTON, OHIO USA

MB 28
Metric Lockwasher

Every reasonable effort has been made to ensure the accuracy of the information contained in this writing, but no liability is accepted for errors, omissions or for any other reason.

FOR DISCUSSION ONLY