



The Timken Company

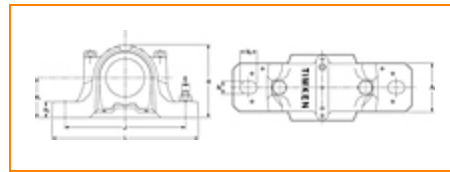
4500 Mt Pleasant St. NW

N. Canton, OH 44720

Phone: (234) 262-3000

E-Mail: CustomerCAD@timken.com • Web site: www.timken.com

Housing – Bearing – Seal SNT 208-307 - 21307 - VR207, SNT Cylindrical Bore Plummer Block Housed Units



[Types of Components](#) | [Housing](#) | [Bearing](#) | [Dimensions](#) | [Specifications](#)

Types of Components

Housing	SNT 208-307
Bearing	21307
Locating Rings (width x OD)	SR80X9
Seal Type	V-ring
Seal	VR207
End Cover ¹	EC510-608

Housing

Material	Cast Iron
Bolt Qty	2
Housing Mass	2.9 Kg

Bearing

Cage Type	EJ
C1 Dynamic Load Rating	90.2
C0 Static Load Rating	77.8
Max Oil Speed	7900
Max Grease Speed	6400

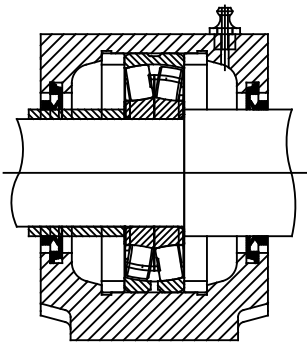
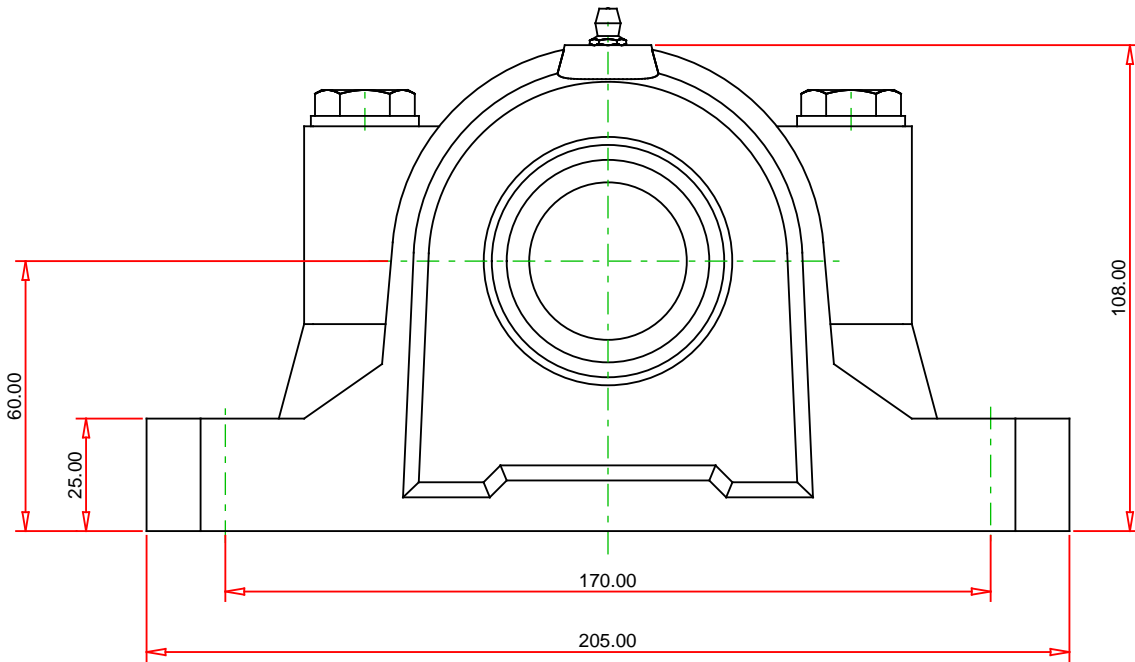
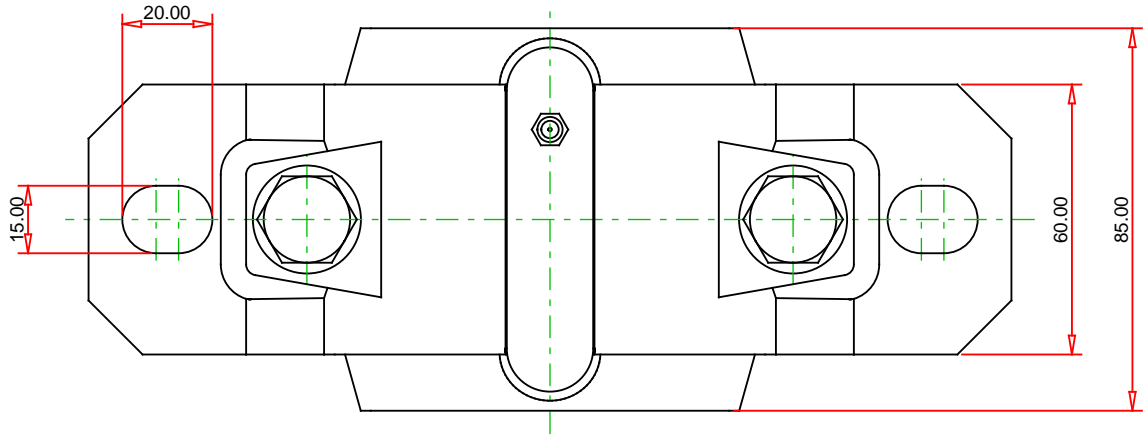
Dimensions

Shaft Diameter da	35 mm
Shaft Diameter db	45 mm
A	85.00 mm
A1	60 mm
G	M12
H	108.00 mm
H1	60.0 mm
H2	25.0 mm
Jmax	175 mm
Jmin	165 mm
J	170.00 mm
L	205 mm
N1	20.00 mm
N	15 mm

Specifications

UPC Code	9999999999
Alternate Part Name	SNT208-307 - 21307 - VR207

¹ Two seals are required for a thru shaft application. One end cover can be used if application is not a thru shaft design. In this case, only one seal is required.



Note: Section View not to Scale

METRIC UNITS

Housing	SNT 208-307
Bearing	21307
Seal (Quantity 2)	VR207
Seal Type	V-ring
Locating Ring (Quantity 2)	SR80X9

TIMKEN®

SNT 208-307 - 21307 - VR207
SNT Cylindrical Bore Plummer Block Housed Units

THE TIMKEN COMPANY
NORTH CANTON, OHIO USA

C1 Dynamic Load Rating (2 rows)	90.2 kN
C0 Static Load Rating	77.8 kN
Max Oil Speed	7900 RPM
Max Grease Speed	6400 RPM
Material	Cast Iron

Every reasonable effort has been made to ensure the accuracy of the information contained in this writing, but no liability is accepted for errors, omissions or for any other reason.

FOR DISCUSSION ONLY