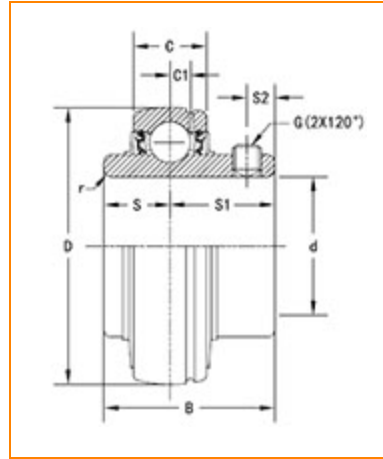




The Timken Company
 4500 Mt Pleasant St. NW
 N. Canton, OH 44720
Phone: (234) 262-3000

E-Mail: CustomerCAD@timken.com • **Web site:** www.timken.com

Part Number UC204, UC 200 Wide Inner Ring Ball Bearings - Set Screw Locking



[Specifications](#) | [Dimensions](#) | [Basic Load Ratings](#)

Specifications

Item #	UC204
Bore Type	Cylindrical bore
Bearing Type	Ball Bearing
Shaft Size d	20 mm
Weight	0.50 lb 0.2 Kg
Locking Style	Set Screw Locking

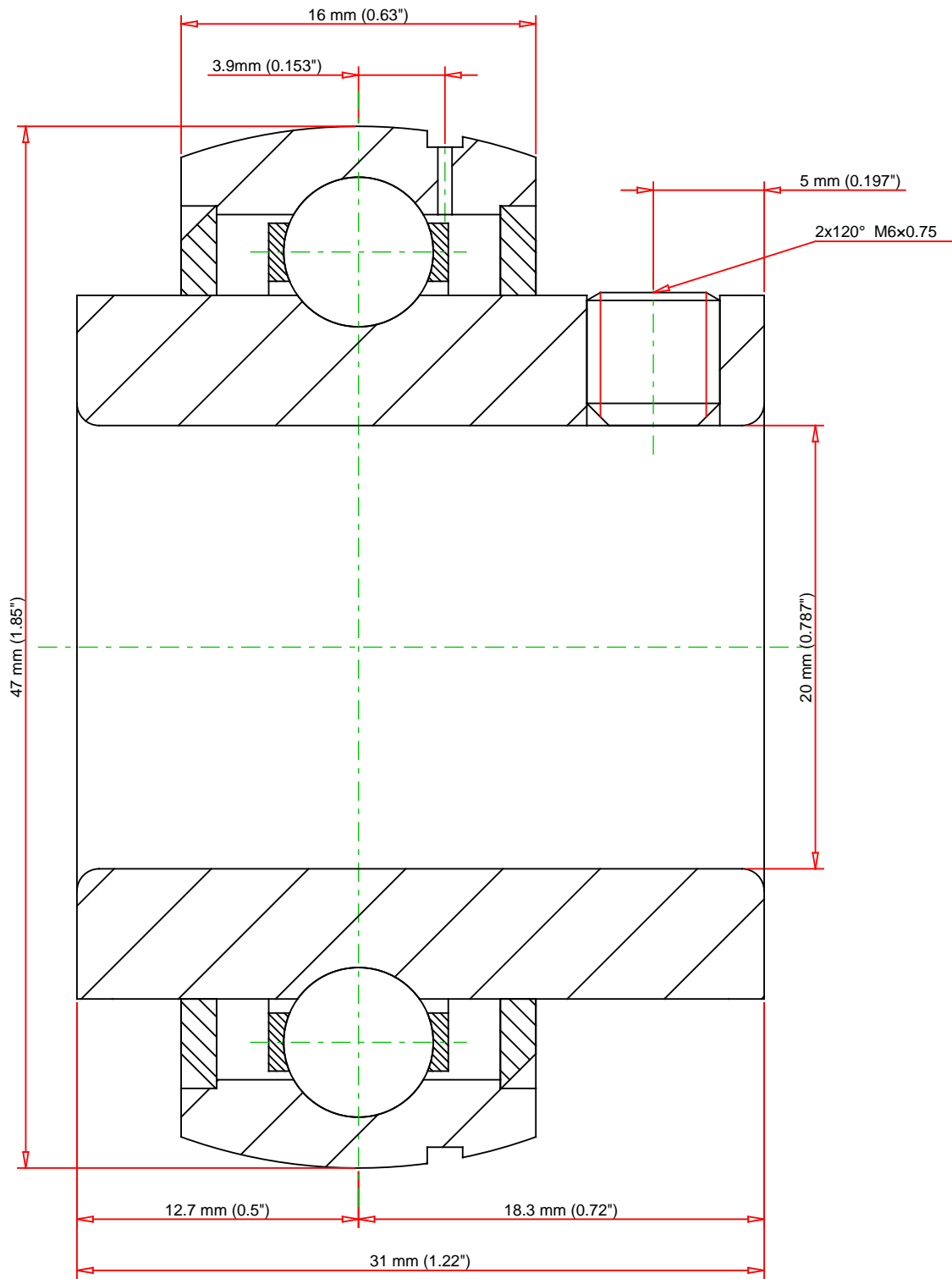
Dimensions

Outside Diameter D	47.000 mm 1.850 in
Outside Ring Width C	16.000 mm 0.630 in

	0.630 in
Radius r	1 mm 0.039 in
Groove Position C1	3.90 mm 0.153 in
Center of Bearing from End S	12.7 mm 0.500 in
Dimension S1	18.30 mm 0.720 in
Set Screw Distance S2	5.00 mm 0.197 in
Set Screw Size	M6×0.75
Number of Set Screws	2
Angle between Set Screws	120 °

Basic Load Ratings

Static Load Rating	1495 lbf 6650 N
Dynamic Load Rating	2878 lbf 12800 N



Weight		0.5 lb	0.2 kg	<div>TIMKEN®</div> <div>THE TIMKEN COMPANY</div> <div>NORTH CANTON, OHIO USA</div>	UC204		
					UC 200 Wide Inner Ring Ball Bearings - Set Screw Locking		
				Basic Load Ratings - C _r		2878 lbf	12800 N
				Load Ratings - C _{0r}		1495 lbf	6650 N
Every reasonable effort has been made to ensure the accuracy of the information contained in this writing, but no liability is accepted for errors, omissions or for any other reason.					FOR DISCUSSION ONLY		