

FAG

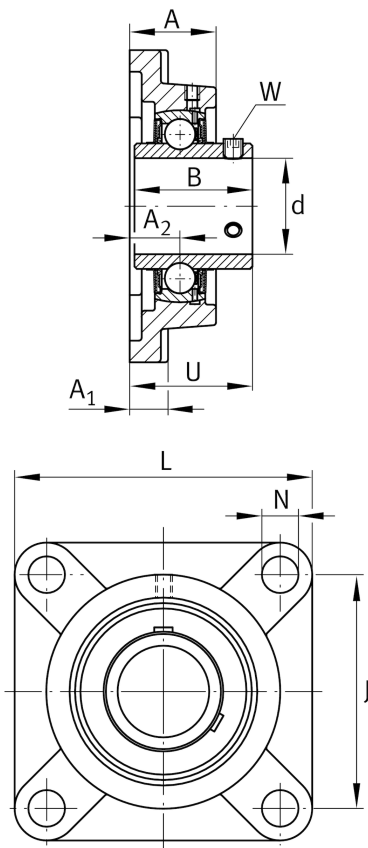
UCF210

Flanged housing unit

Schaeffler ID:
0808221690000

Flanged housing unit UCF

Technical information



Main Dimensions & Performance Data

d	50 mm	Bore diameter
L	143 mm	Flange width
U	54.6 mm	Total height unit
C _r	35,000 N	Basic dynamic load rating, radial
C _{0r}	23,200 N	Basic static load rating, radial
C _{ur}	990 N	Fatigue load limit, radial
	2.601 kg	Weight

Mounting dimensions

J	111 mm	Distance fixing bore
N	16 mm	Fixing bore
N ₁	111 mm	Distance fixing bore
n	4	Number of screwing holes

Dimensions

A ₁	18 mm	Thickness of flange
A ₂	22 mm	Distance raceway
B	51.6 mm	Width
Q	M6	Connection thread lubrication

Additional information

UC210	Bearing designation
-------	---------------------