

## Type codes

001	Series	
<b>DFM</b>	Guided drive, double-acting	

002	Piston diameter	
<b>6</b>	6	
<b>10</b>	10	
<b>12</b>	12	
<b>16</b>	16	
<b>20</b>	20	
<b>25</b>	25	
<b>32</b>	32	
<b>40</b>	40	
<b>50</b>	50	
<b>63</b>	63	
<b>80</b>	80	
<b>100</b>	100	

003	Stroke	
...	10 ... 400	

004	Generation	
<b>B</b>	Function-optimised	

005	Cushioning	
<b>P</b>	Elastic cushioning rings/plates on both sides	
<b>PPV</b>	Pneumatic cushioning, adjustable at both ends	
<b>YSRW</b>	Shock absorber, self-adjusting, progressive	

006	Position sensing	
<b>A</b>	For proximity sensor	

007	Guide	
<b>GF</b>	Plain bearing	
<b>KF</b>	Recirculating ball bearing guide	

008	Temperature range	
	Standard	
<b>S6</b>	Heat-resistant seals max. 120 °C	

009	Precision adjustment extended	
	None	
<b>AJ</b>	Precision adjustment in the end positions, advancing	

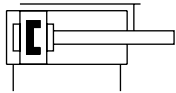
010	Precision adjustment retracting	
	None	
<b>EJ</b>	Precision adjustment in the end positions, retracting	

011	Slot cover, sensor slot	
	None	
<b>...S</b>	1 ... 10 pieces	

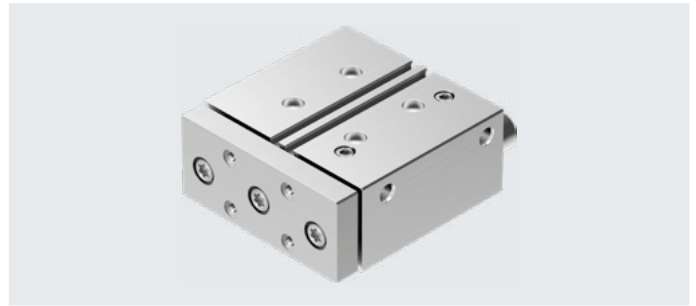
012	Proximity switch, with cable, 2.5 m	
	None	
<b>...G</b>	1 ... 10 pieces	

013	Proximity switch, contactless, with cable, 2.5 m	
	None	
<b>...I</b>	1 ... 10 pieces	

# Data sheet



www.festo.com  
Piston diameter  
12 ... 100 mm



- Ø - Diameter  
6 ... 100 mm
- l - Stroke length  
5 ... 200 mm

## General technical data

Piston diameter	6	10	12	16	20	25	32	40	50	63	80	100
Pneumatic connection	M3	M3	M5	M5	M5	G1/8	G1/8	G1/8	G1/4	G1/4	G3/8	G3/8
Design	Piston											
	Piston rod											
	Guide rods with yoke											
Cushioning	Elastic cushioning rings/plates at both ends											
Position sensing	Via proximity switch											
Type of mounting	With through-hole											
	With female thread											
Mounting position	Any											
Protection against torsion/guide	Guide rod with yoke/with plain-bearing or ball bearing guide											

## Operating and environmental conditions

Piston diameter	6	10	12	16	20	25	32	40	50	63	80	100
Operating pressure [bar]	2 ... 8	1.5 ... 8	2 ... 10			1.5 ... 10			1 ... 10		0.5 ... 10	
Operating medium	Compressed air to ISO 8573-1:2010 [7:4:4]											
Note on operating/ pilot medium	Lubricated operation possible (in which case lubricated operation will always be required)											
Ambient temperature <sup>1)</sup>												
DFM-...-GF [°C]	-10 ... +60		-20 ... +80									
DFM-...-KF [°C]	-		-5 ... +60									
Corrosion resistance CRC <sup>2)</sup>	1											
ATEX	Selected types → <a href="http://www.festo.com">www.festo.com</a>											

1) Note operating range of proximity switches

2) Corrosion resistance class CRC 1 to Festo standard FN 940070

Low corrosion stress. Dry internal application or transport and storage protection. Also applies to parts behind coverings, in the non-visible interior area, and parts which are covered in the application (e.g. drive trunnions).

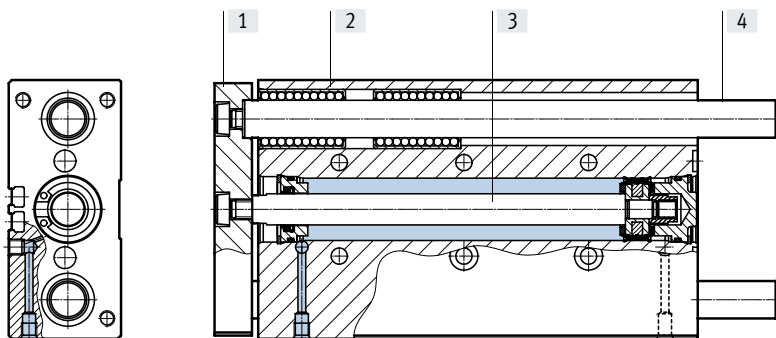
## Speeds [m/s]

Piston diameter	6	10	12	16	20	25	32	40	50	63	80	100
<b>Cushioning P</b>												
Maximum speed, advancing	1.3	1.7	0.8	0.8	0.8	0.8	0.8	0.8	0.6	0.6	0.4	0.4
Maximum speed, retracting	1.1	1.6	0.8	0.8	0.8	0.8	0.8	0.8	0.6	0.6	0.4	0.4

## Data sheet

## Materials

Sectional view



Guided drive		
Piston diameter	6, 10	12 ... 100
[1] Yoke plate	Aluminium	Tempered steel
[2] Housing	Anodised wrought aluminium alloy	
[3] Piston rod	High-alloy stainless steel	
[4] Guide rods		
DFM-....-GF	High-alloy stainless steel	
DFM-....-KF	Hard-chromium plated tempered steel	
– Static seals	Nitrile rubber	
Dynamic seals	Polyurethane, HNBR	Polyurethane
Note on materials	RoHS-compliant	