

Mechanically Jointed Rodless Cylinder Basic Type

Series MY1B

ø10, ø16, ø20, ø25, ø32, ø40, ø50, ø63, ø80, ø100

How to Order

Basic type MY1B 20 - 300 - M9BW

Bore size (mm)

10	10 mm
16	16 mm
20	20 mm
25	25 mm
32	32 mm
40	40 mm
50	50 mm
63	63 mm
80	80 mm
100	100 mm

Port thread type

Symbol	Type	Bore size
Nil	M thread	ø10, ø16, ø20
TN	Rc	ø25, ø32, ø40, ø50, ø63, ø80, ø100
TF	NPT	ø100

Piping

Nil	Standard type
G	Centralized piping type

Note) For ø10, only G is available.

Cylinder stroke (mm)

Refer to "Standard Stroke" on page 957.

Stroke adjusting unit

Nil	Without adjusting unit
A	With adjusting bolt
L	With low load shock absorber + Adjusting bolt
H	With high load shock absorber + Adjusting bolt
AL	With one A unit and one L unit
AH	With one A unit and one H unit each
LH	With one L unit and one H unit each

Only the A unit is available for ø16. Stroke adjusting unit is not available for ø50, ø63, ø80 and ø100. For detailed information on stroke adjusting unit specifications, refer to page 957.

Auto switch

Nil	Without auto switch (Built-in magnet)
-----	---------------------------------------

For ø10 cylinders without an auto switch, the cylinder configuration is for the reed auto switch. Contact SMC when the solid state auto switch is retrofitted.

Applicable auto switches vary depending on the bore size. Select an applicable one referring to the table below.

Made to Order
Refer to page 957 for details.

Number of auto switches

Nil	2 pcs.
S	1 pc.
n	"n" pcs.

Suffix for stroke adjusting unit

Nil	Both sides
S	One side

Note) "S" is applicable for stroke adjusting units A, L and H.

Shock Absorbers for L and H Units

Bore size (mm)	10	20	25	32	40
L unit	—	RB0806	RB1007	RB1412	
H unit	RB0805	RB1007	RB1412	RB2015	

The shock absorber service life is different from that of the MY1B cylinder depending on operating conditions. Refer to the RB Series Specific Product Precautions for the replacement period.

Applicable Auto Switch/Refer to pages 1263 to 1371 for further information on auto switches.

Type	Special function	Electrical entry	Indicator light	Wiring (Output)	Load voltage			Auto switch model				Lead wire length (m)				Pre-wired connector	Applicable load	
					DC	AC	Perpendicular		In-line		0.5 (Nil)	1 (M)	3 (L)	5 (Z)				
							ø10 to ø20	ø25 to ø100	ø10 to ø20	ø25 to ø100								
Solid state switch	—	Grommet	Yes	3-wire (NPN)	24V	5V, 12V	—	M9NV ** [Y69A]		M9N ** [Y59A]		●	● [—]	●	○	○	IC circuit	Relay, PLC
				3-wire (PNP)				M9PV ** [Y7PV]		M9P ** [Y7P]		●	● [—]	●	○	○		
				2-wire				M9BV ** [Y69B]		M9B ** [Y59B]		●	● [—]	●	○	○		
	Diagnostic indication (2-color indication)			3-wire (NPN)		5V, 12V		M9NWW ** [Y7NWW]		M9NWW ** [Y7NWW]		●	● [—]	●	○	○	IC circuit	
				3-wire (PNP)				M9PWW ** [Y7PWW]		M9PW ** [Y7PW]		●	● [—]	●	○	○		
				2-wire				M9BWW ** [Y7BWW]		M9BW ** [Y7BW]		●	● [—]	●	○	○		
Reed switch	—	Grommet	Yes	3-wire (NPN equivalent)	—	5V	—	A96V	—	A96	Z76	●	—	●	—	—	IC circuit	—
				2-wire	24V	12V	100V	A93V	—	A93	—	●	—	●	—	—	—	Relay, PLC
								—	—	—	Z73	●	—	●	●	—		
			No			100V or less		A90V	—	A90	Z80	●	—	●	—	—	IC circuit	

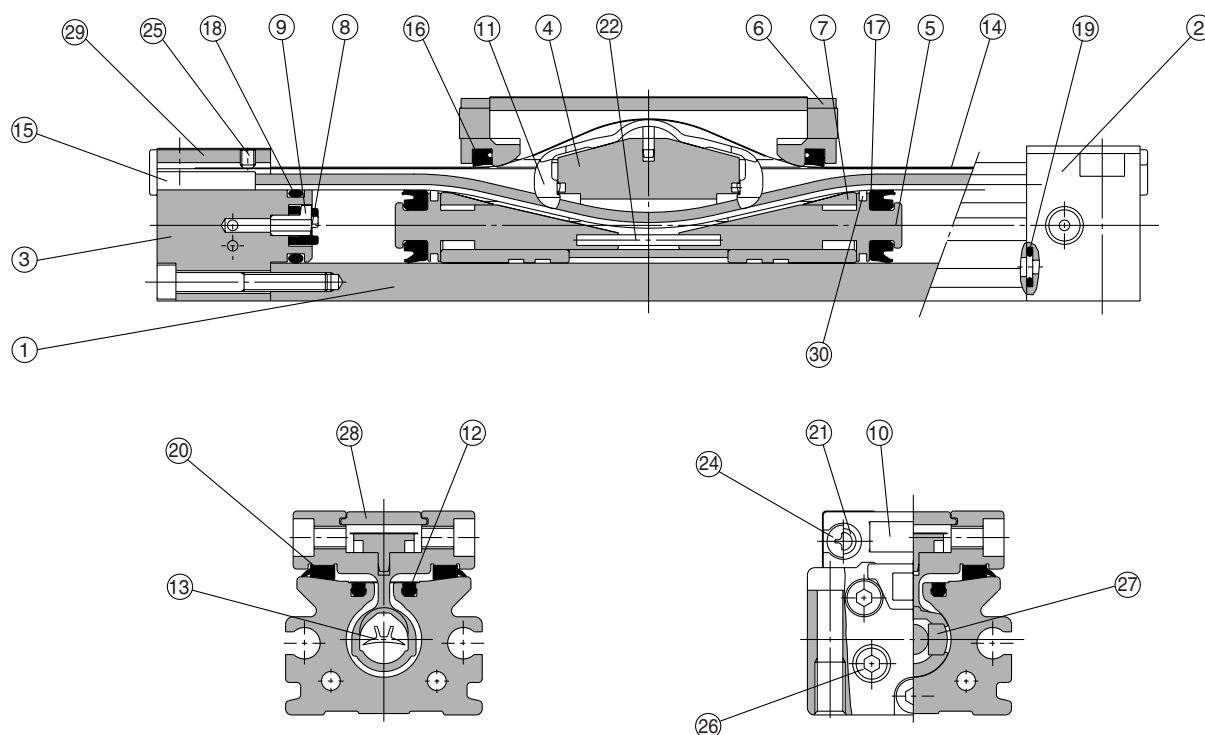
* Lead wire length symbols: 0.5 m Nil (Example) M9NW
1 m M (Example) M9NWM
3 m L (Example) M9NWL
5 m Z (Example) M9NWLZ

* Solid state auto switches marked with "○" are produced upon receipt of order.
** D-M9□□□ type cannot be mounted on ø50.
Select auto switches in brackets.

* There are other applicable auto switches than listed above. For details, refer to page 1053.
* For details about auto switches with pre-wired connector, refer to pages 1328 and 1329.
* Auto switches are shipped together (not assembled).

Construction: ø10

Centralized piping type: MY1B10G



MY1B

MY1M

MY1C

MY1H

MY1HT

MY1□W

MY2C

MY2H□

MY3A

MY3B

MY3M

Component Parts

No.	Description	Material	Note
1	Cylinder tube	Aluminum alloy	Hard anodized
2	Head cover WR	Aluminum alloy	Painted
3	Head cover WL	Aluminum alloy	Painted
4	Piston yoke	Aluminum alloy	Hard anodized
5	Piston	Aluminum alloy	Chromated
6	End Cover	Special resin	
7	Wear ring	Special resin	
8	Bumper	Polyurethane rubber	
9	Holder	Stainless steel	
10	Stopper	Carbon steel	Nickel plated
11	Belt separator	Special resin	
12	Seal magnet	Rubber magnet	

No.	Description	Material	Note
15	Belt clamp	Special resin	
20	Bearing	Special resin	
21	Spacer	Chromium molybdenum steel	Nickel plated
22	Spring pin	Stainless steel	
23	Hexagon socket head cap screw	Chromium molybdenum steel	Nickel plated
24	Round binding head crew	Carbon steel	Nickel plated
25	Slotted set screw	Carbon steel	Black zinc chromated
26	Hexagon socket head plug	Carbon steel	Nickel plated
27	Magnet	—	
28	Top plate	Stainless steel	
29	Head plate	Stainless steel	
30	Felt	Felt	

Replacement Part: Seal Kit

No.	Description	Qty.	MY1B10
13	Seal belt	1	MY10-16A-Stroke
14	Dust seal band	1	MY10-16B-Stroke
16	Scraper	2	MY1B10-PS
17	Piston seal	2	
18	Tube gasket	2	
19	O-ring	4	

* Seal kit includes 16, 17, 18 and 19.

Seal kit includes a grease pack (10 g).

When 13 and 14 are shipped independently, a grease pack is included. (10 g per 1000 strokes)

Order with the following part number when only the grease pack is needed.

Grease pack part number: GR-S-010 (10 g), GR-S-020 (20 g)

D-□

-X□

Individual

-X□

Technical data