

3

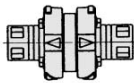
Other Pipng Material: KBN, KBD, KBR (P. 15-3-116)

KB N 1

Model
Body size

Nipple: KBN

Model
KBN1
KBN2
KBN3
KBN4

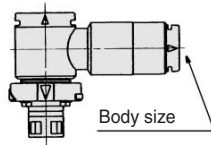


KB D 2-1

Model
Body size

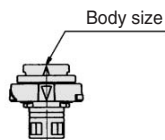
Elbow Different Diameter Female Connector Module: KBD

Model
KBD2-1
KBD3-2
KBD4-3



Different Diameter Module: KBR

Model
KBR2-1
KBR3-2
KBR4-3



4

Plug/Cap: KBP, KBC (P. 15-3-117)

KB P 1

Model
Body size

Plug: KBP

Model
KBP1
KBP2
KBP3
KBP4

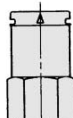
Bracket mounting thread
M6 x 1 x 8 L



Cap: KBC

Model
KBC1
KBC2
KBC3
KBC4

Bracket mounting thread
M6 x 1 x 8 L



5

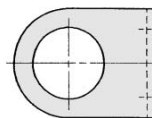
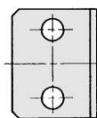
Bracket: KBX (P. 15-3-117)

KB X 6

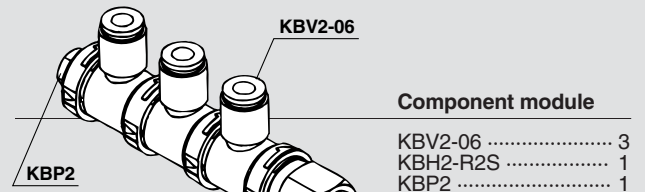
Model
Applicable thread size

Bracket: KBX

Model
KBX6
KBX12
KBX14
KBX16
KBX20
KBX22

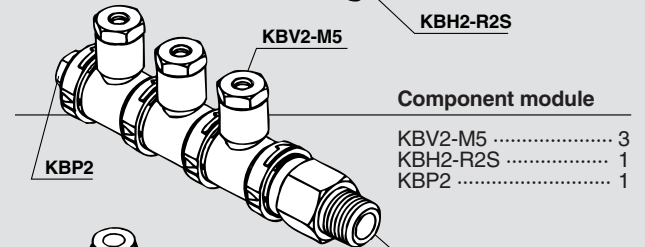


Combination Examples



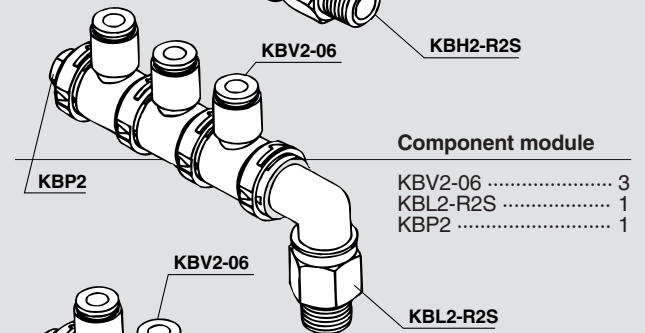
Component module

KBV2-06	3
KBH2-R2S	1
KBP2	1



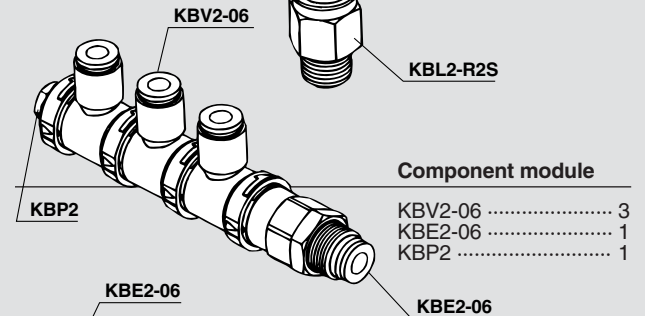
Component module

KBV2-M5	3
KBH2-R2S	1
KBP2	1



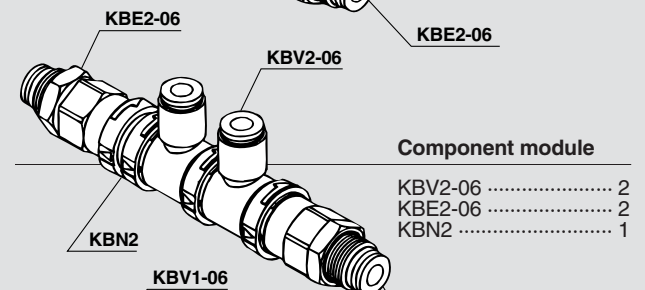
Component module

KBV2-06	3
KBL2-R2S	1
KBP2	1



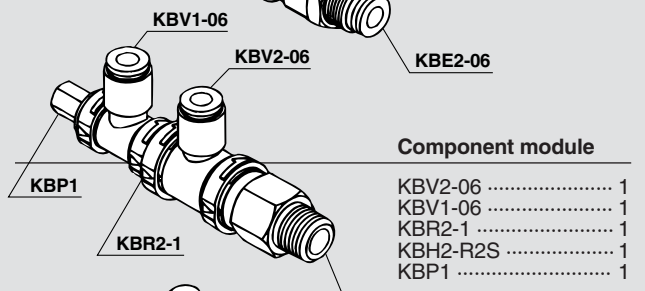
Component module

KBV2-06	3
KBE2-06	1
KBP2	1



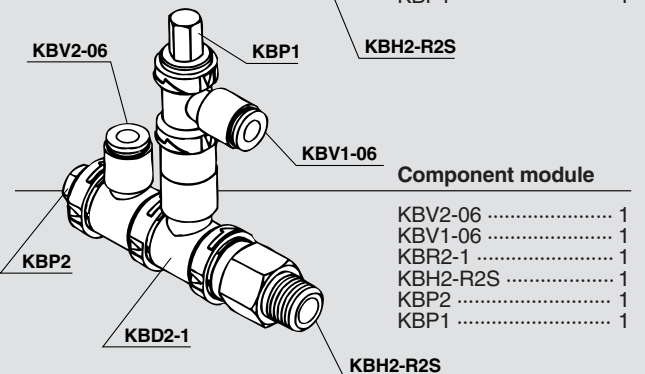
Component module

KBV2-06	2
KBE2-06	2
KBN2	1



Component module

KBV2-06	1
KBV1-06	1
KBR2-1	1
KBH2-R2S	1
KBP1	1



Component module

KBV2-06	1
KBV1-06	1
KBR2-1	1
KBH2-R2S	1
KBP2	1
KBD2-1	1

K

M

H

D

MS

T

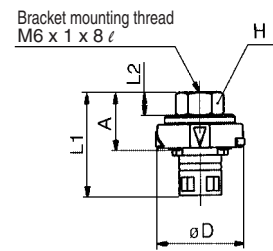
VMG

4 Plug/Cap

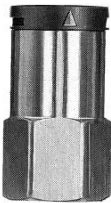
Plug: KBP



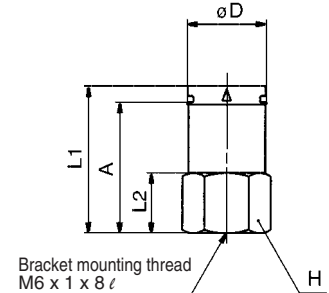
Model	H (width across flats)	D	L1	L2	A	Weight (g)
KBP1	8	16.8	29.5	11.5	19.0	5.6
KBP2	10	21.0	23.0	5.0	12.5	6.8
KBP3	14	28.6	25.5		14.0	13.4
KBP4	19	30.4	27.0		15.0	24.0



Cap: KBC



Model	H (width across flats)	D	L1	L2	A	Weight (g)
KBC1	14	13.6	30.0	13.0	26.5	23.4
KBC2	17	17.6	32.5		28.5	37.0
KBC3	19	25.2	35.5	14.0	31.5	46.7
KBC4	24	27.0	34.0	15.0	29.5	74.4



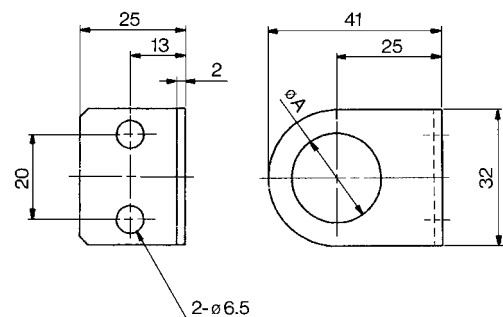
5 Bracket

Bracket: KBX



Model	A	Applicable model	Weight (g)
KBX6	7	KBP, KBC	27.5
KBX12	13	KBE1-04	26.1
KBX14	15	KBE1-06, KBE2-06	25.4
KBX16	17	KBE2-08, KBE3-08	24.4
KBX20	21	KBE2-10, KBE3-10	22.6
KBX22	23	KBE3-12, KBE4-12	21.6

* In the case of KBX6, use the enclosed mounting screws designed for KBP (plug) and KBC (cap).
Screw size: Cross recessed round head screw (M6 x 1 x 8 l)
Screw color: Black



K□

M□

H□

D□

MS

T□

VMG