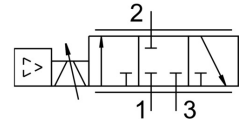


Proportional flow control valve VPCF-6-L-8-G38-6-A4-E-EX2

FESTO

Part number: 8041713



Data sheet

| Feature | Value |
|--|---|
| Valve function | 3-way proportional flow control valve |
| Type code | VPCF |
| Design | Piston gate valve with integrated pressure sensors |
| Type of control | Direct |
| Actuation type | Electrical |
| Reset method | Magnetic spring |
| Symbol | 00995603 |
| Flow direction | Non-reversible |
| Mounting position | Any |
| Sealing principle | Hard |
| Nominal width | 6 mm |
| Short-circuit protection | yes |
| Display type | LED |
| Flow rate range | 0 l/min ... 1000 l/min |
| Operating pressure | 1 bar ... 6 bar |
| Flow rate control range | 20 l/min ... 1000 l/min |
| Note on the flow rate control range | The accuracy specifications provided are based on a flow rate control range of 50-1000 l/min. Regulation takes place at 20 l/min; below this setpoint value, the flow control valve switches to the exhausting position. |
| Repetition accuracy in \pm %FS | 0.5 %FS |
| Absolute accuracy in \pm %FS at room temperature | 3 %FS |
| Hysteresis in \pm %FS | 0.8 %FS |
| Ambient temperature | 0 °C ... 50 °C |
| Temperature of medium | 15 °C ... 35 °C |
| Operating medium | Compressed air as per ISO 8573-1:2010 [6:4:4] |
| Information on operating and pilot media | Operation with oil lubrication not possible Maximum particle size 5 μ m |
| Degree of protection | IP65 |
| Note on degree of protection | In mounted state |
| CE marking (see declaration of conformity) | as per EU explosion protection directive (ATEX) As per EU EMC directive |
| Note on materials | RoHS-compliant |
| Vibration resistance | Transport application test with severity level 2 as per FN 942017-4 and EN 60068-2-6 |
| Shock resistance | Shock test with severity level 2 as per FN 942017-5 and EN 60068-2-27 |
| Corrosion resistance class (CRC) | 1 - Low corrosion stress |

| Feature | Value |
|--|---|
| Certification | RCM compliance mark |
| ATEX category gas | II 3G |
| Type of ignition protection for gas | Ex nA IIC T5 X Gc |
| ATEX category for dust | II 3D |
| Type of (ignition) protection for dust | Ex tc IIIC T60°C X Dc |
| Explosive ambient temperature | 0°C ≤ Ta ≤ +50°C |
| Nominal operating voltage DC | 24 V |
| DC operating voltage range | 20.4 V ... 30 V |
| Residual ripple | 5 % |
| Max. current consumption | 1.2 A |
| Current consumption with load-free outputs | 150 mA |
| Switching output | PNP |
| Switching input | PNP |
| Current rating per output | 100 mA |
| Reverse polarity protection | for operating voltage |
| Duty cycle | 100% |
| Max. electrical power consumption | 36 W |
| Analog output signal range | 4 - 20 mA |
| Analog input signal range | 4 - 20 mA |
| Diagnostic function | Indication via LED |
| Electrical connection | M12x1 A-coded Plug 8-pin |
| Type of mounting | Direct fastening via thread Direct mounting via through-hole |
| Pneumatic connection 1 | G3/8 |
| Pneumatic connection 2 | G3/8 |
| Pneumatic connection 3 | G3/8 |
| Product weight | 856 g |
| Housing material | Wrought aluminum alloy, anodized |
| Seals material | HNBR FPM |
| Explosion prevention and protection | Zone 2 (ATEX) Zone 22 (ATEX) |