

- ˘ Twistlok or sleeve action
- ˘ Wide choice of adaptors
- ˘ Non swivel coupling available
- ˘ Non whip adaptors
- ˘ Rugged design



Twistlok Units

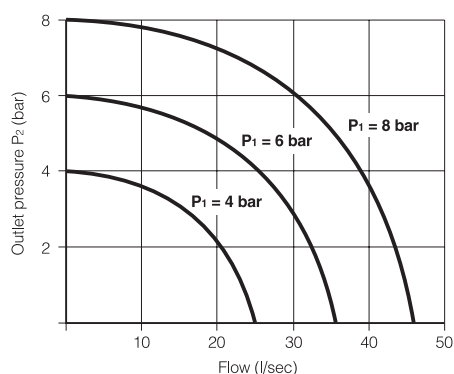
Designed for single hand connection or disconnection. A twist on the cap will release the adaptor and the airline is automatically resealed. When coupled the check unit allows the adaptors to swivel, to eliminate kinking of the hose. The exception to this is the non-swivel check unit which features a special sleeve designed to facilitate disconnection simply by twisting the hose.

Materials

Body	Aluminium
Washer holder	Brass chrome plated
Spring	Stainless steel
Deflector	Brass
Sleeve	Steel zinc plated
Seals	Nitrile (viton on request)
Adaptors	Plated mild steel

Flow Rates

**Pressure vs Flow
Schrader Standard 1/4 Female Coupling**



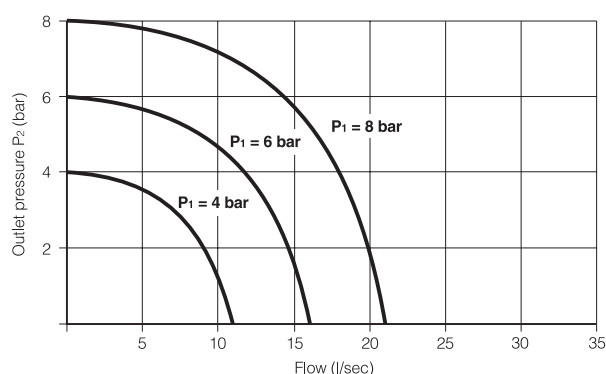
Sleeve Action Units

The sleeve action design provides added security requiring two hand operation before the adaptor is connected, with single handed release. When coupled, the check unit allows the adaptors to swivel, to eliminate kinking of the hose.

Operating Information

	Standard	Heavy Duty
Pressure range	Partial vacuum to 17 bar	Partial vacuum to 17 bar
Temperature range	-10°C to +80°C	-10°C to +80°C
Fluids	Air	Air
Q max	23.6 l/s	51.9 l/sec
Cv	1.07	1.9

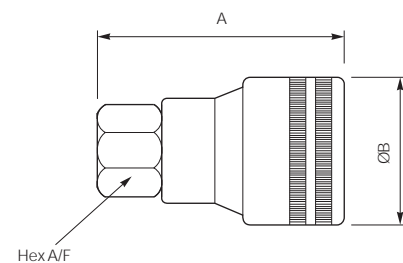
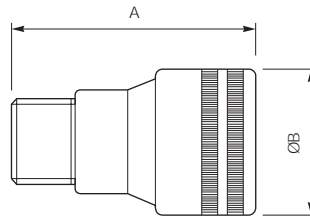
**Pressure vs Flow
Schrader Heavy Duty 1/2 Female Coupling**



Twistlok Standard Check Units

Profile

Symbol

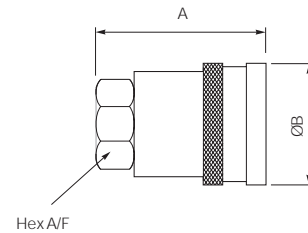
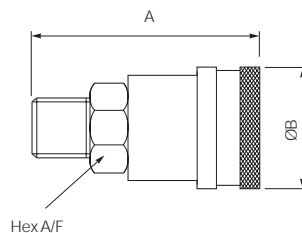


Order Code	Pack Qty	Connection	Weight (g)	Dimensions		
				A	ØB	Hex A/F
8952DL-12	1	G1/4 Female (BSPP)	120	45	30	17,5
9793D-12	1	R1/4 Male (BSPT)	132	55	30	18,0
9792D-12	1	R3/8 Male (BSPT)	138	55	30	18,0
8950CL-12	1	Non Swivel R1/4 Female (BSPT)	114	50	27	13,0

Sleeve Action Standard Check Units

Profile

Symbol



Order Code	Pack Qty	Connection	Weight (g)	Dimensions		
				A	ØB	Hex A/F
7122	1	G1/4 Female (BSPP)	96	46,0	26	17,5
7123	1	G3/8 Female (BSPP)	108	52,5	26	21,0
7132	1	R1/4 Male (BSPT)	106	56,5	26	18,0
7133	1	R3/8 Male (BSPT)	110	60,0	32	25,5