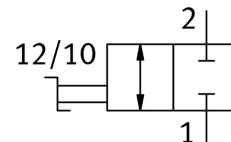
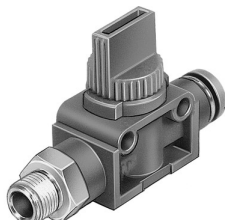


Shut-off valve HE-2-3/8-QS-10

Part number: 153473

FESTO



[PDF](#) General operating condition

Data sheet

| Feature | Value |
|------------------------------------|--|
| Valve function | 2/2 double solenoid |
| Pneumatic connection, port 1 | R3/8 |
| Pneumatic connection, port 2 | QS-10 |
| Type of actuation | Manual |
| Type of mounting | Either: Direct mounting via through-hole Direct mounting via thread |
| Standard nominal flow rate | 760.5 l/min |
| Nominal size | 4.6 mm |
| Operating pressure | -0.095 MPa ... 1 MPa |
| Operating pressure | -0.95 bar ... 10 bar |
| Ambient temperature | 0 °C ... 60 °C |
| Material housing | PBT-reinforced |
| Operating medium | Compressed air to ISO 8573-1:2010 [7:--] |
| Sealing principle | Soft |
| Mounting position | optional |
| Design | Piston gate valve |
| Type of piloting | Direct |
| Flow direction | Reversible |
| Symbol | 00997328 |
| Note on operating and pilot medium | Lubricated operation possible (in which case lubricated operation will always be required) |
| Corrosion resistance class CRC | 2 - Moderate corrosion stress |
| LABS (PWIS) conformity | VDMA24364-B1/B2-L |
| Cleanroom class | Class 4 according to ISO 14644-1 |
| Media temperature | 0 °C ... 60 °C |
| Product weight | 60 g |
| Material screwed plug | Nickel-plated brass |
| Note on materials | RoHS-compliant |
| Material seals | NBR |