

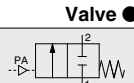
Direct Air Operated 2 Port Valve **VXA21/22 Series**

For Air, Water, Oil

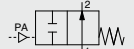


Single Unit

Normally closed
(N.C.)



Normally open
(N.O.)



Material

Body — Brass (C37), Stainless steel
Seal — NBR, FKM, EPDM

When the valve is closed, flow is blocked from port 1 to port 2. However, if the pressure in port 2 is higher than port 1, the valve will not be able to block the fluid.

Pilot port (Free take off direction)

Port size — Rc 1/8
Pilot pressure — 0.25 to 0.7 MPa

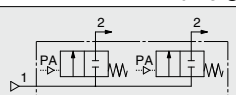
Model

Model	Port size Rc	Orifice dia. (mmø)
VXA212 ² / ₈	1/8, 1/4	3
VXA213 ³ / ₈	1/8, 1/4	4.5
VXA223 ³ / ₈	1/4, 3/8	4.5
VXA224 ³ / ₈	1/4, 3/8	6
VXA225 ³ / ₈	1/4, 3/8	8
VXA226 ³ / ₈	1/4, 3/8, 1/2	10

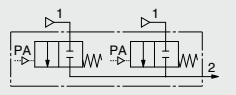


Manifold

Normally closed
(N.C.)



Normally open
(N.O.)



Valve

Material

Base — AL
Body — Zn
Seal — NBR, FKM, EPDM

Manifold

Manifold system — B mount
Manifold station — 2 to 10 station

When the valve is closed, flow is blocked from port 1 to port 2. However, if the pressure in port 2 is higher than port 1, the valve will not be able to block the fluid.

Model

Manifold base	Individual port Rc	Common port Rc
VVXA211-station	1/8	3/8
VVXA212-station	1/4	
VVXA221-station	1/8	
VVXA222-station	1/4	

How to Order (Valve for Manifold)**VXA 21 2 1 - 00 - 1**

Model

Refer to the table (1) shown below for availability.

Valve option

Refer to the table (2) shown below for availability.

Orifice diameter

Refer to the table (1) shown below for availability.

Valve/Body configuration

1	N.C. (For manifold)
3	N.O. (For manifold)

How to Order Manifold Bases**VVXA21
VVXA22 1 - 07 - 1**

Number of manifolds

02	2 stations
:	:
10	10 stations

Port size
(Individual port)

1	Rc 1/8
2	Rc 1/4

* All IN ports are Rc 3/8.

Base

Nil	Common SUP type
V	Individual SUP type

Manifold base

Blanking plate part no.

For VXA21: VX011-001

For VXA22: VX011-006

Seal material

N	NBR
F	FKM
E	EPDM

Table (1) Model/Orifice Diameter

Solenoid valve	Orifice symbol (Diameter)		
	2 (3 mmø)	3 (4.5 mmø)	4 (6 mmø)
VXA21	●	●	—
VXA22	—	●	●

Table (2) Valve Option

Option symbol	Body material	Base material	Seal material	Holder material	Note
Nil	Zn	AL	NBR	PPS	—
A			FKM		
B			EPDM		
V ^(Note)	Al		FKM		Non-leak (10 ⁻⁶ Pam ³ /sec), Medium vacuum (0.1 Pa.abs)

(Note) Use grease for vacuums on sliding parts. Use silicon grease elsewhere.

How to Order Manifold

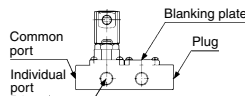
Write both the base part number and the solenoid valve to be mounted or blanking plate part number.

(Example) 7 stations of VXA21 common pressure, individual port Rc 1/8.

(Base) VVXA211-07-1.....1 pc.
 (Valve) * VXA2121-00-1.....6 pcs.
 (Blanking plate) * VX011-001N.....1 pc.

*"N" is the symbol for mounting. When shipping mounted on a base, add an "N" in front of the valve and blanking plate model.

Arrangement of solenoid valves



The standard arrangement of manifolds should be placed on an individual port on this side, each solenoid valve from the left side and a blank plate in the right side. The right side of the common port provides plug.