

Air Cylinder: Standard/Non-rotating Type Single Acting, Spring Return/Extended

Series C76

ø32, ø40

How to Order

Single acting,
Spring return/
Spring extended

C D 76 K E 32 100 S B R2

Built-in magnet

Nil	None
D	Built-in magnet

Type

Nil	Standard
K	Non-rotating rod (Rubber cushion only)

Mounting style

Symbol	Mounting
E	Double end
F	Front nose
Y	Front nose in line port

Auto switch mounting type

A	Rail mounting
B	Band mounting

Applicable auto switches and bands are shown on pages 6-10-43 to 6-10-44. Please order auto switches and bands separately

Action

S	Single acting, Spring return
T	Single acting, Spring extended

Option

R	Stainless steel piston rod, rod end nut and mounting nut
R2	Stainless steel piston rod and rod end nut

Bore size Stroke

Bore size (mm)	Standard stroke (mm)	Max. stroke (mm)
32	10, 25, 40, 50, 80, 100,	200
40	125, 160, 200, 250*	250

* Except Bore 32

Example of How to Order

- Cylinder without auto switch, Bore size: 32, Stroke: 100, Single acting/Spring return and Double end type.
C76E32-100S 1 pc. Cylinder
- Cylinder with auto switch (Band mounted type, 2 pcs.), Bore size: 40, Stroke: 100, Single acting/Spring return, Front nose in line port type and Flange mounting.
CD76Y40-100S-B 1 pc. Cylinder
C76F40A 1 pc. Flange mounting
D-C73L 2 pcs. Auto switch
BM2-040 2 pcs. For auto switch mounting band
- Cylinder with auto switch (Rail mounted type, 2 pcs.), Bore size: 40, Stroke: 50, Single acting/Spring return, Front nose type and Trunnion mounting.
CD76F40-50S-A 1 pc. Cylinder
C76T40 1 pc. Trunnion mounting
D-A73L 2 pcs. Auto switch
- Non-rotating: Cylinder without auto switch, Bore size: 32, Stroke: 100, Single acting/Spring return and Double end type.
C76KE32-100S 1 pc. Cylinder

Mounting Bracket Part No.

Bore size (mm)		32	40
Mounting bracket	Flange, Foot (1 pc.)	C76F32A	C76F40A
	Flange, Foot (2 pcs. with mounting nut 1 pc.)	C76F32B	C76F40B
	Trunnion	C76T32	C76T40
	Clevis	C76C32	C76C40
Accessory	Single knuckle joint	KJ10DA	KJ12DA
	Double knuckle joint	GKM10-20A	GKM12-24A
	Floating joint	JA25-10-150	JA40-12-175

Replacement Parts

Bore (mm)	Part no.		Note
	Standard	Non-rotating	
32	C76-32PS	C76K-32PS	Every set includes: 1 rod seal
40	C76-40PS	C76K-40PS	1 seal retaining washer 1 retaining ring

Suitable also C76 series

CJ1

CJP

CJ2

CM2

CG1

MB

MB1

CA2

CS1

C76

C85

C95

CP95

NCM

NCA

D-

-X

20-

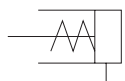
Data

Series C76

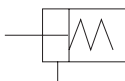


JIS Symbol

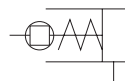
Standard
Spring return



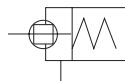
Spring extended



Non-rotating
Spring return



Spring extended



Specifications

Bore size (mm)	32	40
Piston rod dia. (mm)	12	14
Piston rod thread	M10 x 1.5	M12 x 1.75
Port size	G 1/8	G 1/4
Action	Single acting, Single rod, Spring return/extend	
Fluid	Air	
Proof pressure	1.5 MPa	
Max. operating pressure	1.0 MPa	
Min. operating pressure	Spring return: 0.18 MPa, Spring extended: 0.23 MPa	
Ambient and fluid temperature	-20 to 80°C (Built-in magnet type: -10 to 60°C)	
Lubrication	Not required. Use turbine oil Class 1 ISO VG32, if lubricated.	
Piston speed	50 to 750 mm/s	
Allowable kinetic energy	0.65 J	1.2 J
Non-rotating accuracy	±0.5°	±0.5°
Stroke tolerance (mm)	0/+1.4	

Spring Force (Standard, Non-rotating)

Spring Return

(N)

Bore size (mm)	Standard stroke	Spring force													
		10		25		50		100		150		200		250	
		Extended	Retract	Extended	Retract	Extended	Retract	Extended	Retract	Extended	Retract	Extended	Retract	Extended	Retract
32	10, 25														
	50, 100	53.9	48.8	53.9	41.2	53.9	28.4	66.7	19.6	66.7	18.1	66.7	19.6	—	—
	150, 200														
40	10, 25														
	50, 100	78.5	72.6	78.5	63.7	78.5	49.0	76.5	23.5	76.5	23.5	76.5	23.5	76.5	23.5
	150, 200														
	250														

Spring Extended

(N)

Bore size (mm)	Standard stroke	Spring force													
		10		25		50		100		150		200		250	
		Extended	Retract	Extended	Retract	Extended	Retract	Extended	Retract	Extended	Retract	Extended	Retract	Extended	Retract
32	10, 25														
	50, 100	66.7	56.3	66.7	40.7	66.7	14.7	66.7	19.6	66.7	18.1	66.7	19.6	—	—
	150, 200														
40	10, 25														
	50, 100	76.5	65.9	76.5	50	76.5	23.5	76.5	23.5	76.5	23.5	76.5	23.5	76.5	23.5
	150, 200														
	250														