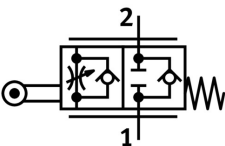


One-way flow control valve GG-1/4-3/8

Part number: 3633

FESTO



Data sheet

General operating condition

| Feature | Value |
|--|--|
| Valve function | One-way flow control function |
| Pneumatic connection, port 1 | G1/4 |
| Pneumatic connection, port 2 | G1/4 |
| Type of actuation | Mechanical |
| Adjustment component | Roller lever |
| Type of mounting | With through-hole |
| Standard nominal flow rate in flow control direction | 870 l/min |
| Standard nominal flow rate in blocked direction | 1150 l/min |
| Operating pressure | 0.03 bar ... 8 bar |
| Operating pressure | 0.43 psi ... 116 psi |
| Ambient temperature | -10 °C ... 60 °C |
| Material housing | Wrought aluminium alloy |
| Mounting position | optional |
| Symbol | 00991465 |
| Operating medium | Compressed air to ISO 8573-1:2010[7:-:-] |
| Note on operating and pilot medium | Lubricated operation possible (in which case lubricated operation will always be required) |
| LABS (PWIS) conformity | VDMA24364-B2-L |
| Media temperature | -10 °C ... 60 °C |
| Product weight | 380 g |
| Material seals | NBR |