

Solid State Auto Switch Band Mounting Style D-G59/D-G5P/D-K59



Refer to SMC website for the details of the products conforming to the international standards.

Auto Switch Specifications

PLC: Programmable Logic Controller

| D-G5□, D-K59 (With indicator light) | | | |
|-------------------------------------|-----------------------------------------------------------|---------------|--------------------------|
| Auto switch model | D-G59 | D-G5P | D-K59 |
| Wiring type | 3-wire | | 2-wire |
| Output type | NPN | PNP | — |
| Applicable load | IC circuit, Relay, PLC | | 24 VDC Relay, PLC |
| Power supply voltage | 5, 12, 24 VDC (4.5 to 28 VDC) | | — |
| Current consumption | 10 mA or less | | — |
| Load voltage | 28 VDC or less | — | 24 VDC (10 to 28 VDC) |
| Load current | 40 mA or less | 80 mA or less | 5 to 40 mA |
| Internal voltage drop | 1.5 V or less (0.8 V or less at 10 mA load current) | 0.8 V or less | 4 V or less |
| Leakage current | 100 μA or less at 24 VDC | | 0.8 mA or less at 24 VDC |
| Indicator light | Red LED illuminates when turned ON. | | |
| Standard | CE marking | | |

• Lead wires — Oilproof heavy-duty vinyl cord, $\phi 4$, 0.3 mm², 3 cores (Brown, Black, Blue), 2 cores (Brown, Blue), 0.5 m

Note 1) Refer to page 1272 for solid state auto switch common specifications.

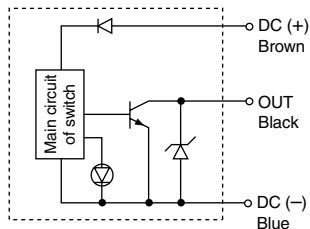
Note 2) Refer to page 1272 for lead wire lengths.

Grommet

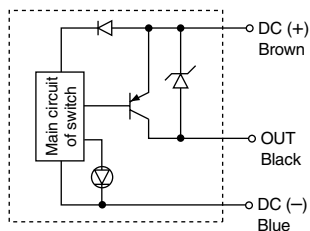


Auto Switch Internal Circuit

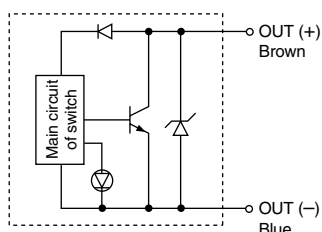
D-G59



D-G5P



D-K59



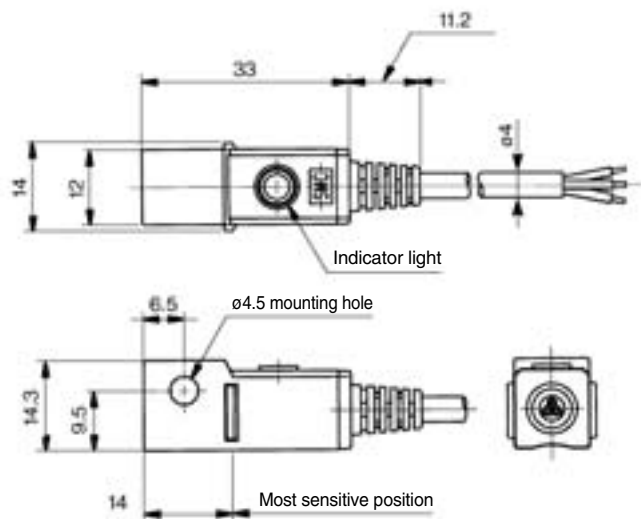
Mass

(g)

| Auto switch model | | D-G59 | D-G5P | D-K59 |
|----------------------|-----|-------|-------|-------|
| Lead wire length (m) | 0.5 | 20 | 20 | 18 |
| | 3 | 78 | 78 | 68 |
| | 5 | 124 | 124 | 108 |

Dimensions

(mm)



D-□