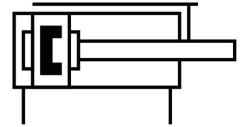
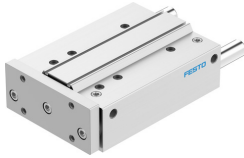


# Guided drive DFM-80-200-P-A-GF

Part number: 170891

FESTO



[PDF](#) General operating condition

## Data sheet

Feature	Value
Distance from centre of gravity of load to yoke plate xs	125 mm
Stroke	200 mm
Piston diameter	80 mm
Operating mode, drive unit	Yoke
Cushioning	Elastic cushioning rings/plates at both ends
Mounting position	optional
Guide	Plain-bearing guide
Design	Guidance
Position detection	Via proximity switch
Symbol	00991737
Operating pressure	0.05 MPa ... 1 MPa
Operating pressure	0.5 bar ... 10 bar
Max. speed	0.4 m/s
Mode of operation	Double-acting
Operating medium	Compressed air to ISO 8573-1:2010 [7:4:4]
Note on operating and pilot medium	Lubricated operation possible (in which case lubricated operation will always be required)
Corrosion resistance class CRC	1 - Low corrosion stress
LABS (PWIS) conformity	VDMA24364-B1/B2-L
Ambient temperature	-20 °C ... 80 °C
Impact energy in end positions	0.75 J
Max. force Fy	2320 N
Max. force Fy static	2320 N
Max. force Fz	2320 N
Max. force Fz static	2320 N
Max. moment Mx	179.8 Nm
Max. torque Mx static	179.8 Nm
Max. moment My	126.4 Nm
Max. torque My static	126.4 Nm
Max. moment Mz	126.4 Nm
Max. torque Mz static	126.4 Nm
Max. permissible torque load Mx as a function of stroke	24.68 Nm
Max. effective load dependent upon stroke at defined distance xs	245 N
Theoretical force at 0.6 MPa (6 bar, 87 psi), return stroke	2827 N
Theoretical force at 0.6 MPa (6 bar, 87 psi), advance stroke	3016 N
Moving mass	7099 g

Feature	Value
Product weight	14963 g
alternative connections	See product drawing
Pneumatic connection	G3/8
Note on materials	RoHS-compliant
Material cover	Wrought aluminium alloy
Material seals	NBR
Material housing	Wrought aluminium alloy
Material piston rod	High-alloy stainless steel