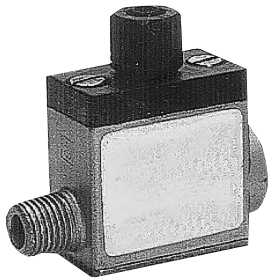


Flow and check valves ► Non-return valves

Pilot-operated non-return valve, Series NR02

► Qn = 550 - 3000 l/min ► installing in piping



5340-051

Version
Working pressure min./max.
Ambient temperature min./max.
Medium temperature min./max.
Medium

Poppet valve
3 bar / 10 bar
-25°C / +80°C
-10°C / +60°C
Compressed air

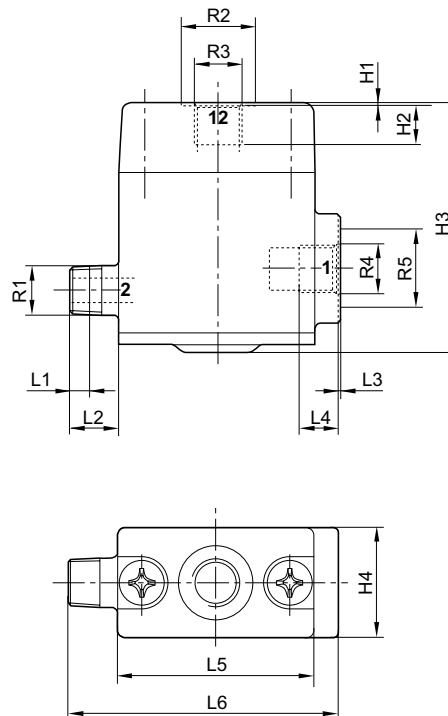
Materials:
Housing
Seals

Die cast zinc
Acrylonitrile butadiene rubber

	Port 1	Port 2	Port 12	Qn 1 → 2 [l/min]	Weight [kg]	Fig.	Part No.
	G 1/8 G 1/4 G 1/4 G 1/2	R 1/8 R 1/4 R 1/4 G 1/2	G 1/8 Ø 8x1 G 1/8 G 1/8	550 1000 1000 3000	0.132 0.132 0.132 0.335	Fig. 1 Fig. 2 Fig. 3 Fig. 4	5340050010 5340051000 5340051010 5340053000

Nominal flow Qn at 6 bar and Δp = 1 bar

Fig. 1



00128640

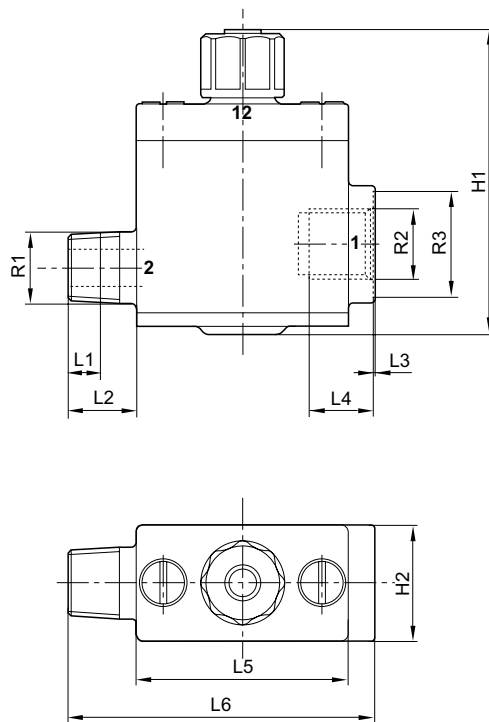
Part No.	R1	R2	R3	R4	R5	L1	L2	L3	L4	L5	L6	H1
5340050010	R1/8	15	G1/8	G1/8	16	4	10	0.3	8	40	55	0.3

Pilot-operated non-return valve, Series NR02

► Qn = 550 - 3000 l/min ► installing in piping

Part No.	H2	H3	H4									
5340050010	8	50.5	22									

Fig. 2

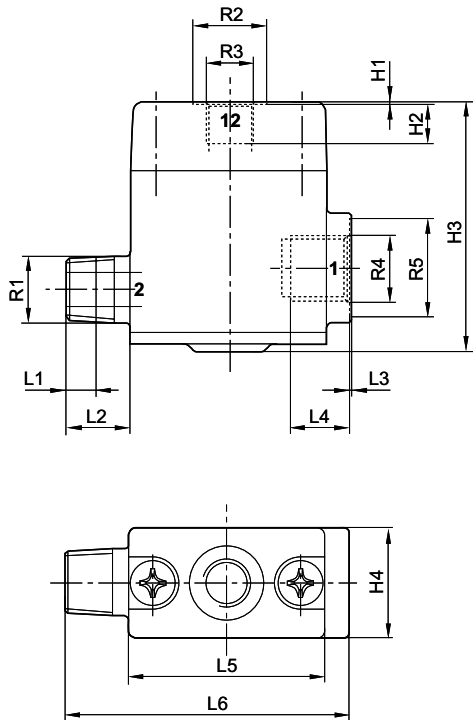


00128642

Part No.	R1	R2	R3	L1	L2	L3	L4	L5	L6	H1	H2	
5340051000	R1/4	G1/4	20	6	13	0.3	12	40	58	57.5	22	

Pilot-operated non-return valve, Series NR02
▶ Qn = 550 - 3000 l/min ▶ installing in piping

Fig. 3



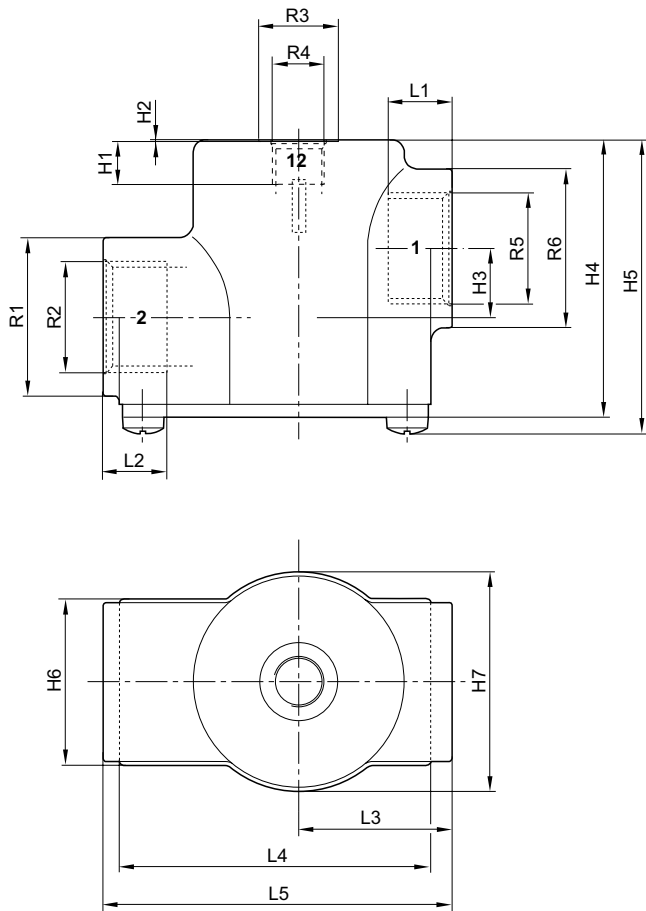
00128643

Part No.	R1	R2	R3	R4	R5	L1	L2	L3	L4	L5	L6	H1
5340051010	R1/4	15	G1/8	G1/4	20	6	13	0.3	12	40	58	0.3
Part No.	H2	H3	H4									
5340051010	8	50.5	22									

Pilot-operated non-return valve, Series NR02

▶ Qn = 550 - 3000 l/min ▶ installing in piping

Fig. 4



00128641

Part No.	R1	R2	R3	R4	R5	R6	L1	L2	L3	L4	L5	H1
5340053000	30	G1/2	15	G1/8	G1/2	30	12	12	29	59	66	8
Part No.	H2	H3	H4	H5	H6	H7						
5340053000	0.3	13	52.5	56	31.5	41.5						