

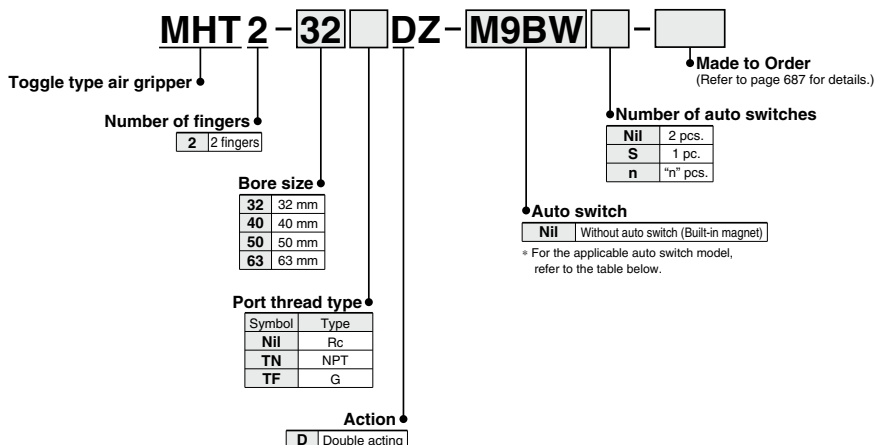
# Toggle Type Air Gripper

## MHT2 Series

ø32, ø40, ø50, ø63

RoHS

### How to Order



### Applicable Auto Switches/Refer to pages 797 to 850 for further information on auto switches.

Type	Special function	Electrical entry	Indicator light	Wiring (Output)	Load voltage		Auto switch model		Lead wire length (m)*					Pre-wired connector	Applicable load
					DC	AC	Electrical entry direction		0.5 (Nil)	1 (M)	3 (L)	5 (Z)	None (N)		
Solid state auto switch	Diagnosis (2-color indicator)	Grommet	Yes	3-wire (NPN)	5 V, 12 V	—	Perpendicular	M9NV	M9N	●	●	○	—	○	Relay, PLC
				3-wire (PNP)	12 V		In-line	M9PV	M9P	●	●	○	—	○	
				2-wire	12 V			M9BV	M9B	●	●	○	—	○	
				3-wire (NPN)	5 V, 12 V			M9NVV	M9NW	●	●	○	—	○	
	Water resistant (2-color indicator)	Grommet	Yes	3-wire (PNP)	12 V			M9PVV	M9PW	●	●	○	—	○	
				2-wire	12 V			M9BWW	M9BW	●	●	○	—	○	
				3-wire (NPN)	5 V, 12 V			M9NAV <sup>*1</sup>	M9NA <sup>*1</sup>	○	○	●	—	○	
				3-wire (PNP)	12 V			M9PAV <sup>*1</sup>	M9PA <sup>*1</sup>	○	○	●	—	○	
Reed auto switch	—	Grommet	Yes	3-wire (NPN equivalent)	—	5 V		M9BAV <sup>*1</sup>	M9BA <sup>*1</sup>	○	○	●	—	○	Relay, PLC
				2-wire	24 V	12 V		A96V	A96	●	—	●	—	—	
						100 V		A93V <sup>*2</sup>	A93	●	●	●	—	—	
			No		5 V, 12 V	100 V or less		A90V	A90	●	—	●	—	—	IC circuit

\*1 Water resistant type auto switches can be mounted on the above models, but in such case SMC cannot guarantee water resistance.

\*2 1 m type lead wire is only applicable to D-A93.

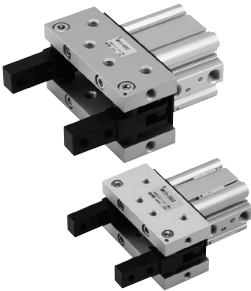
\* Lead wire length symbols: 0.5 m..... Nil (Example) M9NV  
1 m..... M (Example) M9NWM  
3 m..... L (Example) M9NL  
5 m..... Z (Example) M9NZ

\* "○" marked solid state auto switches are produced upon receipt of order.

\* Refer to page 694 for details, because there are other auto switches available than above models.

\* Refer to pages 837 and 838 for the details of the auto switches with a pre-wired connector.

- Ideal for gripping heavy workpiece.
- The toggle mechanism holds workpiece even when pressure drops.
- Auto switch is attachable.



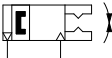
## Model/Specifications

Model	MHT2-32□□DZ	MHT2-40□□DZ	MHT2-50□□DZ	MHT2-63□□DZ
Bore size (mm)	32	40	50	63
Action	Double acting			
Fluid	Air			
Operating pressure	0.1 to 0.6 MPa			
Ambient and fluid temperature	5 to 60°C			
Lubrication	Not required			
Finger opening angle (Total)	-3° to 28°	-3° to 27°	-2° to 23°	-2° to 23°
Weight (g)	790	1070	1890	2720
Gripping moment <sup>Note)</sup> (Effective value) (N-m)	12.4	36.0	63.0	106

Note) At the pressure of 0.5 MPa

## Symbol

Double acting/External grip



**Made to Order Individual Specifications**  
(Refer to page 695 for details.)

Symbol	Specifications/Description
-X5060	Double rod cylinder
-X5070	With boss in head side

## Made to Order

[Click here for details](#)

Symbol	Specifications/Description
-X4	Heat resistance (100°C)
-X5	Fluororubber seal
-X50	Without magnet
-X63	Fluorine grease

MHZ

MHF

MHL

MHR

MHK

MHS

MHC

**MHT**

MHY

MHW

-X□

MRHQ

MA

D-□