



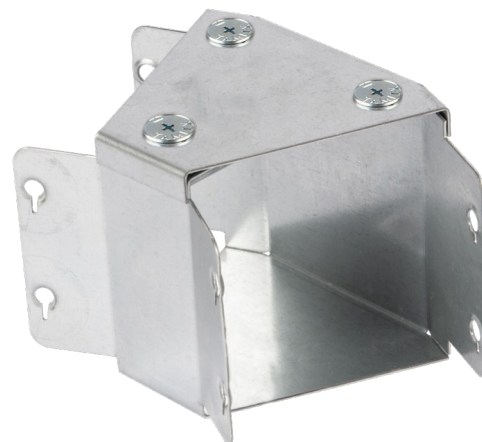
| Product Code: | Issue Number: | Issue Date: | Issued By: |
|---------------|---------------|-------------|------------|
| TGHT22        | 1.0           | 19/11/2019  | ADH        |

## Description:

50X50 TURNBUCKLE GUSSET BEND 45° TOP LID

## Features:

Turnbuckle fixings for quick fitting of lids.  
Tamlex offer a range of gusset bends and tees which allow a greater bend radius for cables.  
Built-in couplers on all outlets allowing them to be fitted directly to the trunking.  
Manufactured from continuously hot dipped zinc coated low carbon steel strip to BSEN10346: 2009.



## Technical:

|               |                            |
|---------------|----------------------------|
| Height        | 50 mm                      |
| Width         | 50 mm                      |
| Length        | 119 mm                     |
| Material      | 0.9 mm steel               |
| Finish        | Pre-Galvanised Steel       |
| Trunking Type | Gusset Bend                |
| Standard      | BS EN 50085-1; BS EN 10346 |
| IP Rating     | N/A                        |

## Important:

Cable trunking is designed such that the main body carries the weight of cables. Trunking should NOT be installed in any way that causes the lid to carry the cable weight.

## Multi-Compartment Options

Standard trunking and accessories are available in multi compartment options. Trunking and accessories are supplied with equal compartments as standard. For unequal compartments, details must be supplied at the time of order. 3 compartment is available in width code 3 and above.

## Weights:

| 1 Compartment | 2 Compartment | 3 Compartment |
|---------------|---------------|---------------|
| 0.131 Kg      | 0.186 Kg      | N/A           |

The approximate weights given are for pre-galvanised finish only, in kilograms (nominal) and subject to material thickness tolerance.

## Dimensions: mm

|    |                 |
|----|-----------------|
| H  | 52 mm           |
| W  | 119 mm          |
| D  | 48 mm           |
| P1 | 25 mm           |
| P2 | N/A Single hole |

Dimensions are identical for single and multi-compartment

