

FAG

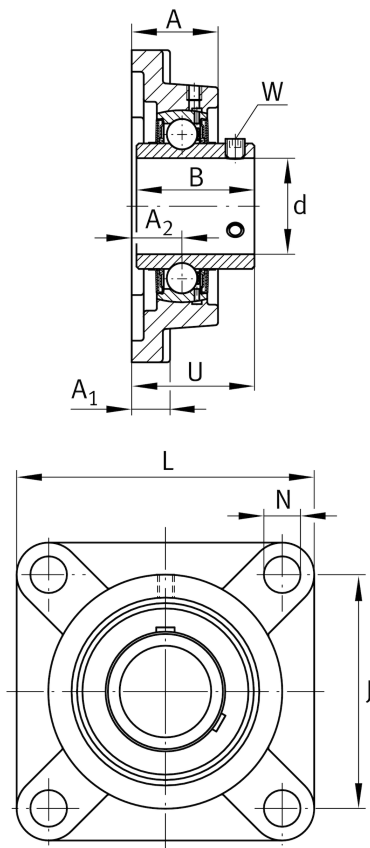
UCF205

Flanged housing unit

Schaeffler ID:
0806730400000

Flanged housing unit UCF

Technical information



Main Dimensions & Performance Data

d	25 mm	Bore diameter
L	95 mm	Flange width
U	35.8 mm	Total height unit
C _r	14,000 N	Basic dynamic load rating, radial
C _{0r}	7,800 N	Basic static load rating, radial
C _{ur}	335 N	Fatigue load limit, radial
	0.876 kg	Weight

Mounting dimensions

J	70 mm	Distance fixing bore
N	12 mm	Fixing bore
N ₁	70 mm	Distance fixing bore
n	4	Number of screwing holes

Dimensions

A ₁	14 mm	Thickness of flange
A ₂	16 mm	Distance raceway
B	34.1 mm	Width
Q	M6	Connection thread lubrication

Additional information

UC205	Bearing designation
-------	---------------------