



# Modular Type Regulators *Series AR*

<b>Regulator Series AR</b>    <b>Pages 346 through to 355</b>	Model	Port size	Options
	<b>AR10</b>	M5 x 0.8	Bracket  Square embedded type pressure gauge (except the AR10)  Round type pressure gauge  Digital pressure switch (except the AR10)  Panel mount
	<b>AR20</b>	1/8, 1/4	
	<b>AR25</b>	1/4, 3/8	
	<b>AR30</b>	1/4, 3/8	
	<b>AR40</b>	1/4, 3/8, 1/2	
	<b>AR40-06</b>	3/4	
	<b>AR50</b>	3/4, 1	
	<b>AR60</b>	1	
<b>Regulator with Backflow Function Series AR□K</b>    <b>Pages 346 through to 355</b>	<b>AR20K</b>	1/8, 1/4	
	<b>AR25K</b>	1/4, 3/8	
	<b>AR30K</b>	1/4, 3/8	
	<b>AR40K</b>	1/4, 3/8, 1/2	
	<b>AR40K-06</b>	3/4	
	<b>AR50K</b>	3/4, 1	
	<b>AR60K</b>	1	

AC

AF□

**AR**

AL

AW□

A□G

AV

AF800  
AF900

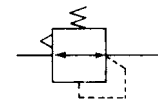
# Regulator

# AR10 to AR60

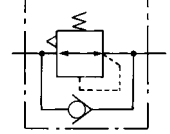
## Regulator with Backflow Function

# AR20K to AR60K

JIS Symbol  
Regulator



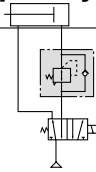
Regulator with  
Backflow Function



- With the backflow function it incorporates a mechanism to exhaust the air pressure in the outlet side reliably and quickly.

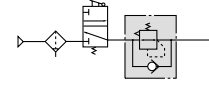
Example 1)

When the pressure in the rear and the front of the cylinder differs:



Example 2)

When the air supply is cut off and releasing the inlet pressure to the atmosphere, the residual pressure release of the outlet side can be ensured for a safety purpose.



## How to Order

AR **30** **K** - **03** **BE** - **1NR**

① ② ③ ④ ⑤ ⑥

Made to Order

- Option/Semi-standard: Select one each for a to g.
- Option/Semi-standard symbol: When more than one specification is required, indicate in alphanumeric order.  
Example) AR30K-03BE-1NR

		Symbol	Description	①									
				Body size									
				10	20	25	30	40	50	60			
②	With backflow function	Nil	Without backflow function	●	●	●	●	●	●	●	●		
		K <small>Note 1)</small>	With backflow function	—	●	●	●	●	●	●	●		
+													
③	Thread type	Nil	Metric thread (M5)	●	—	—	—	—	—	—	—		
			Rc	—	●	●	●	●	●	●	●		
		N	NPT	—	●	●	●	●	●	●	●		
		F	G	—	●	●	●	●	●	●	●		
+													
④	Port size	M5	M5	●	—	—	—	—	—	—	—		
		01	1/8	—	●	—	—	—	—	—	—		
		02	1/4	—	●	●	●	●	—	—	—		
		03	3/8	—	—	●	●	●	—	—	—		
		04	1/2	—	—	—	—	●	—	—	—		
		06	3/4	—	—	—	—	●	●	—	—		
		10	1	—	—	—	—	—	●	●	—		
+													
⑤	Option	a	Mounting	Nil	Without mounting option	●	●	●	●	●	●	●	
				B <small>Note 3)</small>	With bracket	●	●	●	●	●	●	●	●
				H	With set nut (for panel fitting)	●	●	●	●	●	—	—	—
		b	Pressure gauge	Nil	Without pressure gauge	●	●	●	●	●	●	●	●
E	Square embedded type pressure gauge (with limit indicator)			—	●	●	●	●	●	●	●		
G	Round type pressure gauge (without limit indicator)			●	—	—	—	—	—	—	—		
	Round type pressure gauge (with limit indicator)			—	●	●	●	●	●	●	●		
Digital pressure switch	M		Round type pressure gauge (with color zone)	—	●	●	●	●	●	●	●		
	E1 <small>Note 4)</small>		Output: NPN output / Electrical entry: Wiring bottom entry	—	●	●	●	●	●	●	●		
	E2 <small>Note 4)</small>		Output: NPN output / Electrical entry: Wiring top entry	—	●	●	●	●	●	●	●		
	E3 <small>Note 4)</small>		Output: PNP output / Electrical entry: Wiring bottom entry	—	●	●	●	●	●	●	●		
		E4 <small>Note 4)</small>	Output: PNP output / Electrical entry: Wiring top entry	—	●	●	●	●	●	●			