

SRH Series

Made to Order Specifications 3

Please contact SMC for detailed dimensions, specifications and lead times.



6 Regulator (Stainless Steel 316) with Port Sizes Rc 3/4, Rc 1

- Regulator made of stainless steel 316 with port sizes Rc 3/4 and Rc 1.
 - EPDM or FPM is used for valves (seals), O-rings and diaphragms.
 - Oil-free
- Oil is not used for any of the parts and all wetted parts are degreased.
- Note) Products must be assembled under normal conditions.

Specifications

Model	XT13-394-06	XT13-394-10	INA-48-1-06	INA-48-1-10	INA-48-58-06-H	INA-48-58-10-H	INA-48-16-06	INA-48-16-10
Port size	Rc3/4	Rc1	Rc3/4	Rc1	Rc3/4	Rc1	Rc3/4	Rc1
Relief mechanism	Non-relief				Relief		Non-relief	
Fluid	Deionized water (Pure water)				Air, N ₂			
Proof pressure	1.5 MPa						1.9 MPa	
Max. operating pressure	1.0 MPa						1.3 MPa	
Set pressure	0.05 to 0.5 MPa						0.1 to 1.0 MPa	
Ambient and fluid temperatures	5 to 60°C							
Fluid-contact material (metal)	Stainless steel 316							
Diaphragm material	EPDM		Fluororubber					
Weight	2100 g							

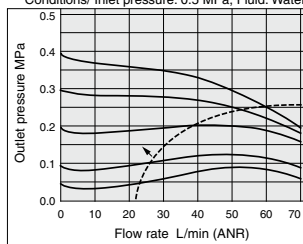
Note) The pressure gauge is optional. For details, refer to the Options on page 862.

Flow Rate Characteristics

XT13-394-06, 10

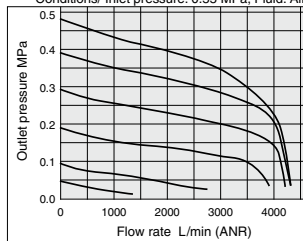
--- Max. operating flow rate
(It is recommended to be used within the max. operating flow rate (negative) range.)

Conditions/ Inlet pressure: 0.5 MPa, Fluid: Water

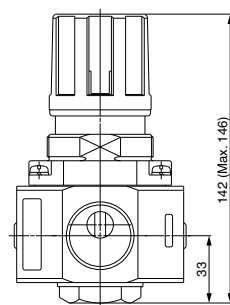
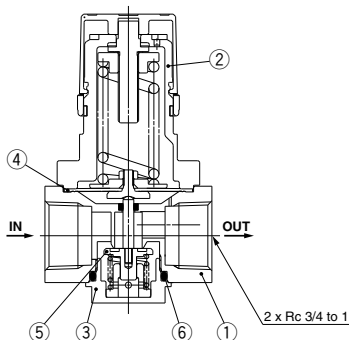
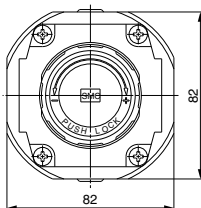


INA-48-1-06, 10

Conditions/ Inlet pressure: 0.55 MPa, Fluid: Air



Construction



Component parts

No.	Description	Material	
		XT13-394-06, 10	INA-48-1-06, 10
1	Body	Stainless steel 316	
2	Bonnet	ADC12	
3	Valve guide	Stainless steel 316	
4	Diaphragm Assembly	EPDM Stainless steel 316 (Wetted part metal)	Fluororubber Stainless steel 316 (Wetted part metal)
5	Valve	EPDM (Seals) Stainless steel 316 (Wetted part metal)	FPM (Seals) Stainless steel 316 (Wetted part metal)
6	O-ring	EPDM	
		Fluororubber	