

## 40022084. - cubio cupboard

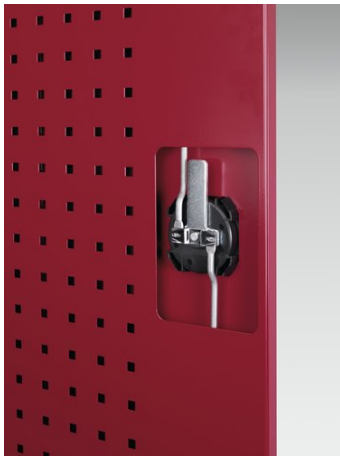
### Short Description

cubio cupboard with perfo doors, 2 shelves, 2 drawers

WxDxH: 1300x650x1000mm

### Product Images





## Additional Information

---

Description	cubio kitted cupboard. Featuring a heavy duty, reinforced steel housing with up to 1 tonne total capacity with double, perfo panel lined, reinforced high doors with 2 adjustable height, galvanised steel shelves (160kg U.D.L.), 2x 125mm drawers with 100% extension slides (75kg U.D.L.). Finished in durable powder coat paint. WxDxH: 1300x650x1000mm.
Width	1300
Depth	650
Height	1000
Customs tariff number	94032080
Product material	Sheet steel
Product surface	Powder coated
Drawer type	Internal
Drawer height 1	125mm
Drawer 1 Internal Dimensions	1175mm x 525mm x 105mm
Drawer height 2	125mm
Drawer 2 Internal Dimensions	1175mm x 525mm x 105mm
Door type	Perfo
Number of shelves	2

## Product Options

---

Colour:	Anthracite grey
	Crimson red
	Gentian blue
	Light grey