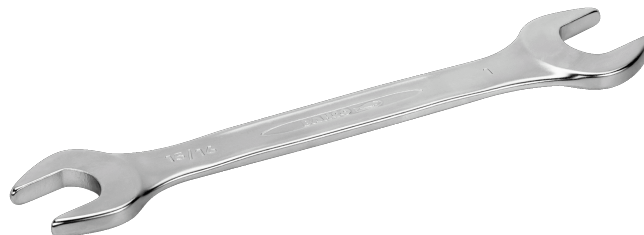




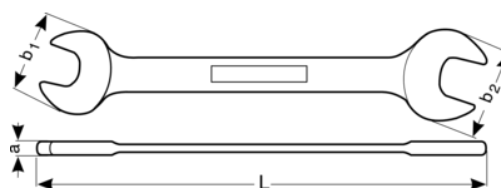
6Z-5/8-3/4

**5/8" x 3/4" Double Open End
Wrench with Chrome Finish 201
mm**



PRODUCT DETAILS



- Patented U-shaped design
- Open end angle 15° with a slimmer head for more accessibility
- Large and one-directional size marking for easy identification
- Chrome plated micro-matte finishing provides high quality surface
- High-performance alloy steel
- Less wear on fastener with the large contact surface area of the jaw
- Optimised legibility and identification with high-contrast imprint
- Standards: ISO 691, ISO 1085, ISO 10102 and ISO 3318



Follow the Fish!



PRODUCT ATTRIBUTES

Product		L	a	b1	b2	
6Z-5/8-3/4	5/8x3/4 in	201 mm	7.0 mm	34.7 mm	35.6 mm	122 g

