

Prior to Use

Auto Switches Common Specifications 1

⚠ Specific Product Precautions

Refer to the Auto Switch Precautions on pages 8 to 11 before using auto switches.

Auto Switches Common Specifications

Type	Reed auto switch	Solid state auto switch
Leakage current	None	3-wire: 100 μ A or less, 2-wire: 0.8 mA or less
Operating time	1.2 ms	1 ms or less ⁽³⁾
Impact resistance	300 m/s ²	1000 m/s ² ⁽⁴⁾
Insulation resistance	50 M Ω or more at 500 VDC Mega (Between lead wire and case)	
Withstand voltage	1500 VAC for 1 minute ⁽¹⁾ (Between lead wire and case)	1000 VAC for 1 minute (Between lead wire and case)
Ambient temperature	-10 to 60°C	
Enclosure	IEC60529 Standard IP67 ⁽²⁾	

- * 1) Electrical entry: Connector type (A73C/A80C/C73C/C80C): 1000 VAC/min. (Between lead wire and the case)
- * 2) The terminal conduit type (D-A3/A3□A/A3□C/G39/G39A/G39C/K39/K39A/K39C), DIN terminal type (D-A44/A44A/A44C) and heat resistant auto switch (D-F7NJL) conform to IEC60529 Standard IP63. The trimmer type amplifier section (D-R□K) conforms to IP40.
- * 3) Excluding the solid state auto switches with a timer (D-M5□TL/G5NTL/F7NTL/F5NTL types) and **magnetic field resistant 2-color indication solid state auto switch (D-P3DW□/P4DWL)**. The operating time for D-J51 is 2 ms or less and for D-P3DW□/P4DWL is 40 ms or less.
- * 4) 980 m/s² for the trimmer type sensor section, 98 m/s² for the amplifier section.

Lead Wire

Lead wire length indication
(Example)

D-M9BW**L**

● Lead wire length

Nil	0.5 m
M	1 m
L	3 m
Z	5 m
N*	None

* Applicable for the connector type (D-□□C) only.

Note 1) Lead wire length Z: 5 m

Applicable auto switches

Reed auto switch: D-B53/B54, D-C73(C)/C80C, D-A73(C)(H)/A80C,
D-A53/A54, D-Z73, D-90/97/90A/93A

Solid state auto switch: Manufactured upon receipt of order as standard.

Note 2) The standard lead wire length for trimmer auto switches is 3 m.

Note 3) The standard lead wire length for solid state auto switches with a timer, water resistant 2-color indication solid state auto switches, wide range detection type solid state auto switches, heat resistant 2-color indication solid state auto switches and magnetic field resistant 2-color indication solid state switches is 3 m and 5 m (except D-P3DW, D-M9□A(V)□). (0.5 m is not available.)

Note 4) 1 m (M): D-M9□(W)(V) only

Note 5) Lead wire length tolerance

Lead wire length	Tolerance
0.5 m	±15 mm
1 m	±30 mm
3 m	±90 mm
5 m	±150 mm

Solid state auto switch oil resistant flexible cabtire cord indication

Add a -61 at the end of the part number for the solid state auto switch flexible cord except D-Y59□, D-Y69□, D-Y7□, D-M9□/M9□V, and D-M9□W/M9□WV.

(Example)

D-F7PL-**61**

● Flexible specification

(D-Y59, D-Y69, D-Y7 and D-M9 series use flexible lead wire as standard.)

Lead wires with a connector indication

Part No. of Lead Wires with Connectors

(Applicable only for connector type)

Model	Lead wire length
D-LC05	0.5 m
D-LC30	3 m
D-LC50	5 m

Solid State Auto Switch Tie-rod Mounting Style D-F59/D-F5P/D-J59/D-J51



Refer to SMC website for the details of the products conforming to the international standards.
(Except D-J51)

Auto Switch Specifications

PLC: Programmable Logic Controller

D-F5□, D-J5□ (With indicator light)				
Auto switch model	D-F59	D-F5P	D-J59	D-J51
Wiring type	3-wire		2-wire	
Output type	NPN	PNP	—	—
Applicable load	IC circuit, Relay, PLC		24 VDC Relay, PLC	AC Relay, PLC
Power supply voltage	5, 12, 24 VDC (4.5 to 28 VDC)		—	—
Current consumption	10 mA or less		—	—
Load voltage	28 VDC or less	—	24 VDC (10 to 28 VDC)	80 to 260 VAC
Load current	40 mA or less	80 mA or less	5 to 40 mA	5 to 80 mA
Internal voltage drop	1.5 V or less (0.8 V or less at 10 mA load current)	0.8 V or less	4 V or less	14 V or less
Leakage current	100 μ A or less at 24 VDC		0.8 mA or less at 24 VDC	1 mA or less at 100 VAC 1.5 mA or less at 200 VAC
Indicator light	Red LED illuminates when turned ON.			
Standard	CE marking			—

• Lead wires — Oilproof heavy-duty vinyl cord, ϕ 4, 0.3 mm², 3 cores (Brown, Black, Blue), 2 cores (Brown, Blue), 0.5 m

Note 1) Refer to page 1272 for solid state auto switch common specifications.

Note 2) Refer to page 1272 for lead wire lengths.

Mass

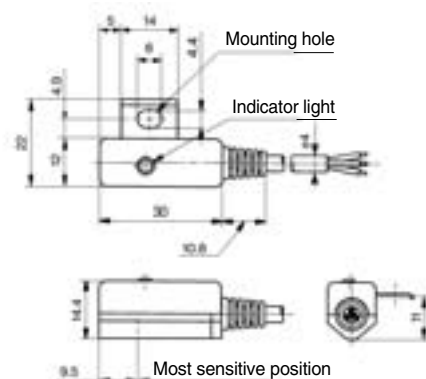
(g)

Auto switch model	D-F59	D-F5P	D-J59	D-J51
Lead wire length (m)	0.5	23	23	21
	3	81	81	71
	5	127	127	111

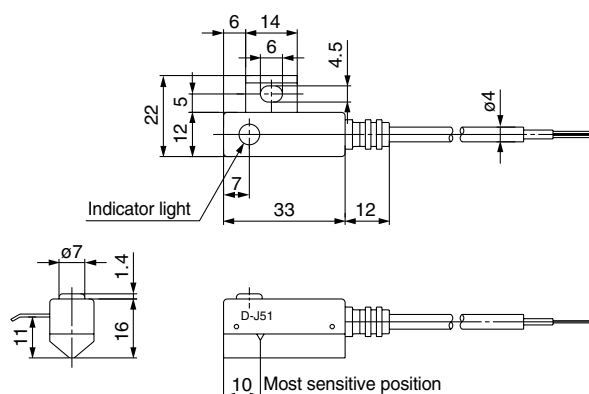
Dimensions

(mm)

D-F59/D-F5P/D-J59



D-J51

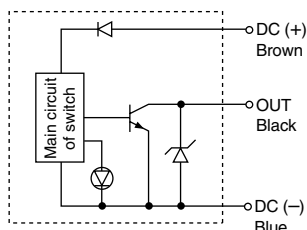


Grommet

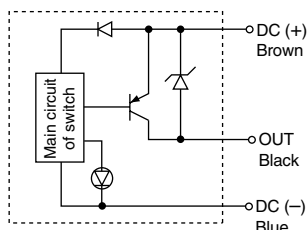


Auto Switch Internal Circuit

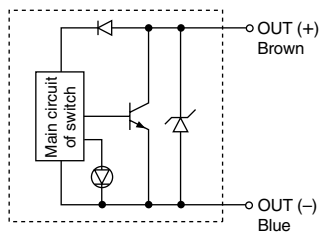
D-F59



D-F5P



D-J59



D-J51

