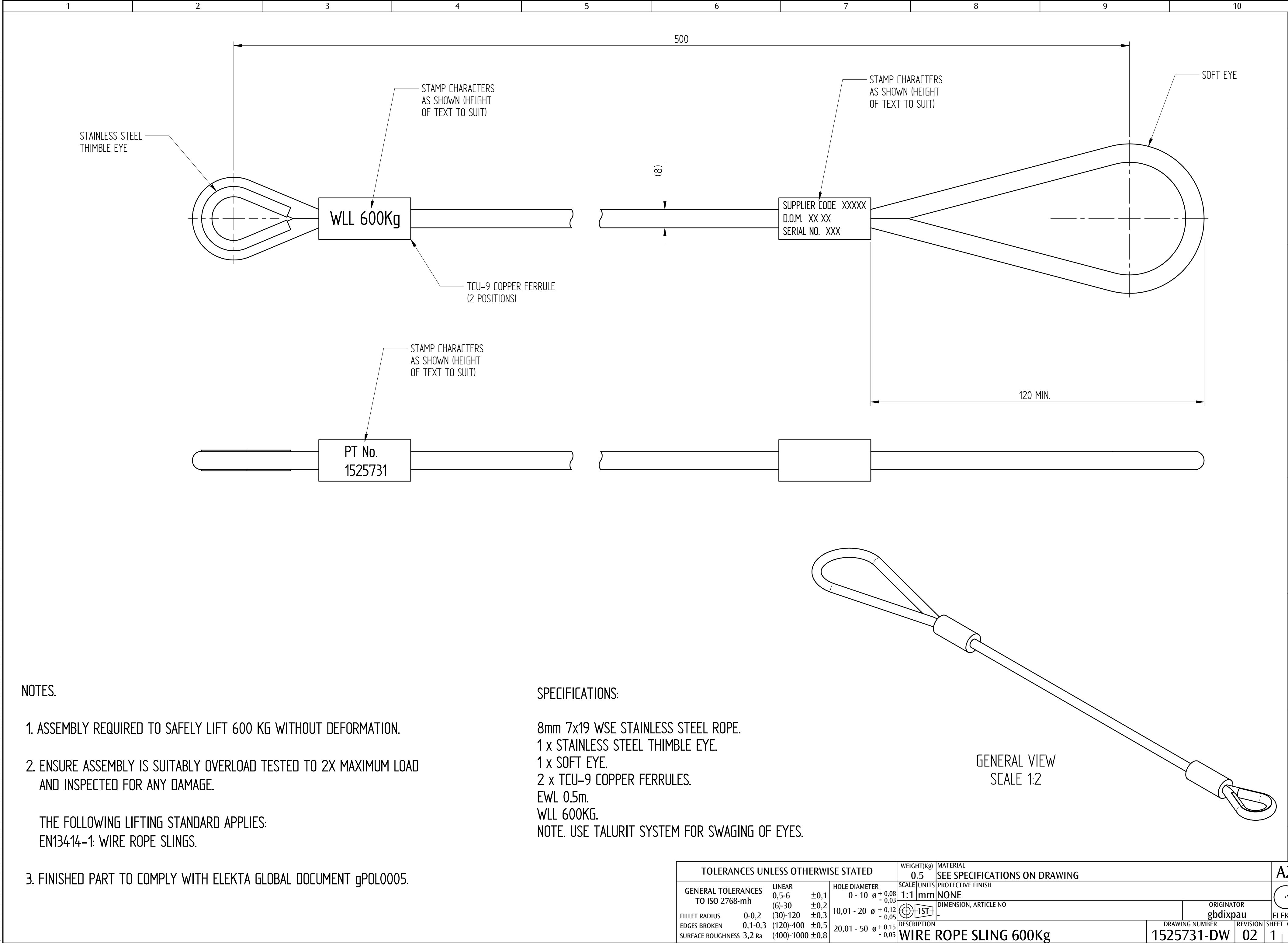


© 2009 ELEKTA - THIS DOCUMENT IS THE PROPERTY OF THE ELEKTA GROUP AND IT IS SUPPLIED IN CONFIDENCE AND MUST NOT BE USED FOR ANY OTHER PURPOSE OTHER THAN FOR WHICH IT IS SUPPLIED AND MUST NOT BE REPRODUCED WITHOUT PERMISSION IN WRITING FROM THE COPYRIGHT HOLDERS. CONTRAVENTION WILL LEAD TO PROSECUTION



NOTES.

1. ASSEMBLY REQUIRED TO SAFELY LIFT 600 KG WITHOUT DEFORMATION.
 2. ENSURE ASSEMBLY IS SUITABLY OVERLOAD TESTED TO 2X MAXIMUM LOAD AND INSPECTED FOR ANY DAMAGE.
- THE FOLLOWING LIFTING STANDARD APPLIES:
EN13414-1: WIRE ROPE SLINGS.

3. FINISHED PART TO COMPLY WITH ELEKTA GLOBAL DOCUMENT gPOL0005.

SPECIFICATIONS:

8mm 7x19 WSE STAINLESS STEEL ROPE.
1 x STAINLESS STEEL THIMBLE EYE.
1 x SOFT EYE.
2 x TCU-9 COPPER FERRULES.
EWL 0.5m.
WLL 600KG.
NOTE. USE TALURIT SYSTEM FOR SWAGING OF EYES.

TOLERANCES UNLESS OTHERWISE STATED				WEIGHT(Kg) 0.5	MATERIAL SEE SPECIFICATIONS ON DRAWING	A2
GENERAL TOLERANCES TO ISO 2768-mh				SCALE [UNITS] 1:1 mm	PROTECTIVE FINISH NONE	
FILLET RADIUS	0-0,2	±0,1	10,01 - 20	± 0,08 - 0,03	DIMENSION, ARTICLE NO	ORIGINATOR gbdixpau
EDGES BROKEN	0,1-0,3	±0,2	20,01 - 50	± 0,12 - 0,05	DRAWING NUMBER 1525731-DW	
SURFACE ROUGHNESS	3,2 Ra	±0,3				
		±0,8			REVISION 02	SHEET OF 1 1