



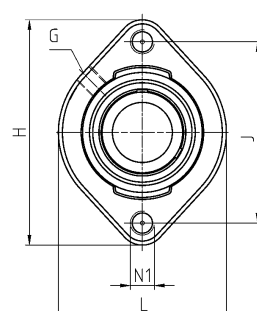
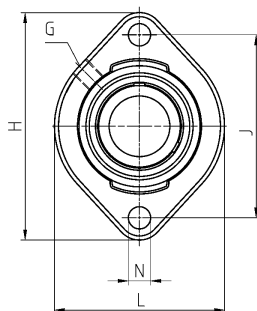
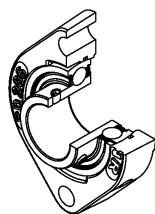
Designation scheme

Housing designs

Design		Description	Dimension lists starting on page
C200		Cylindrical cartridge housing made of grey cast iron, relubricatable	138
C300		Cylindrical cartridge housing made of grey cast iron, relubricatable	138
EHE200		Hanger housing made of grey cast iron with metric fixing threads, relubricatable	146
F200		Square flanged housing made of grey cast iron with 4 fixing holes, relubricatable	72
F300		Square flanged housing made of grey cast iron with 4 fixing holes, relubricatable	72
FA200		Oval flanged housing made of grey cast iron with 1 fixing hole and 1 slot, relubricatable	116
FAE200		Oval flanged housing made of grey cast iron with 1 fixing hole and 1 slot, relubricatable	114
FC200		Round flanged housing made of grey cast iron with centring rim and 4 fixing holes, relubricatable	84
FCE200		Round flanged housing made of grey cast iron with centring rim and 4 fixing holes, relubricatable	80
FD200		Flat oval flanged housing made of grey cast iron with 2 fixing or tapped bores, relubricatable	112
FE200		Square flanged housing made of grey cast iron with 4 fixing holes, relubricatable	68
FEE200		Round flanged housing made of grey cast iron with centring rim and 4 fixing holes, relubricatable	88
FL200		Oval flanged housing made of grey cast iron with 2 fixing holes, relubricatable	100
FL300		Oval flanged housing made of grey cast iron with 2 fixing holes, relubricatable	100
FLE200		Oval flanged housing made of grey cast iron with 2 fixing holes, relubricatable	96
FLZ200		Oval flanged housing made of grey cast iron with centring rim and 2 fixing holes, relubricatable	108
FS300		Square flanged housing made of grey cast iron with centring rim and 4 fixing holes, relubricatable	90
FTE200		Triangular flanged housing made of grey cast iron with 3 fixing holes, relubricatable	94

Housing

FD200 relubricatable



<div> <div>Shaft diameter</div> <div>Unit</div> </div>		Main dimensions [mm]										
d [mm]		L	H	J	A	A2	e	N1	N	B1	s	D1
12	USFD201	58,7	81,0	63,5	15,0	24,4	8,4	M6	6,5	22,0	6,0	24,6
	ESFD201	58,7	81,0	63,5	15,0	30,5	8,4	M6	6,5	28,6	6,5	-
15	USFD202	58,7	81,0	63,5	15,0	24,4	8,4	M6	6,5	22,0	6,0	24,6
	ESFD202	58,7	81,0	63,5	15,0	30,5	8,4	M6	6,5	28,6	6,5	-
17	USFD203	58,7	81,0	63,5	15,0	24,4	8,4	M6	6,5	22,0	6,0	24,6
	ESFD203	58,7	81,0	63,5	15,0	30,5	8,4	M6	6,5	28,6	6,5	-
20	USFD204	66,5	90,5	71,4	17,0	27,5	9,5	M10	9,0	25,0	7,0	29,0
	ESFD204	66,5	90,5	71,4	17,0	32,9	9,5	M10	9,0	30,9	7,5	-
25	USFD205	71,0	97,0	76,2	17,5	29,4	9,9	M12	9,0	27,0	7,5	34,0
	ESFD205	71,0	97,0	76,2	17,5	33,3	9,9	M12	9,0	30,9	7,5	-
30	USFD206	84,0	112,5	90,5	20,5	33,4	11,4	M12	11,0	30,0	8,0	40,3
	ESFD206	84,0	112,5	90,5	20,5	38,1	11,4	M12	11,0	35,7	9,0	-
35	USFD207	94,0	126,0	100,0	22,0	35,9	12,4	M12	11,0	32,0	8,5	48,0
	ESFD207	94,0	126,0	100,0	22,0	41,8	12,4	M12	11,0	38,9	9,5	-
40	USFD208	104,0	148,0	119,0	24,0	37,1	12,05	M12	14,0	34,0	9,0	53,0
	ESFD208	104,0	148,0	119,0	24,0	44,8	12,05	M12	14,0	43,7	11,0	-

Type code for the execution with mounting thread: e. g.: USFD204M10